

PRODUCT INFORMATION

Clone ID	DM158
Target	AXL
Synonyms	AXL;UFO
Host Species	Rabbit
Description	Anti-AXL antibody(DM158); Rabbit mAb
Delivery	In Stock
Uniprot ID	P30530
IgG type	Rabbit IgG
Clonality	Monoclonal
Reactivity	Human
Applications	ELISA; Flow Cyt
Recommended Dilutions	ELISA 1:5000-10000; Flow Cyt 1:100
Purification	Purified from cell culture supernatant by affinity chromatography
Formulation & Reconstitution	Lyophilized from sterile PBS, pH 7.4. Normally 5 % - 8% trehalose is added as protectants before lyophilization. Please see Certificate of Analysis for specific instructions of reconstitution.
Storage & Shipping	Store at -20°C to -80°C for 12 months in lyophilized form. After reconstitution, if not intended for use within a month, aliquot and store at -80°C (Avoid repeated freezing and thawing). Lyophilized proteins are shipped at ambient temperature.
Background	The protein encoded by this gene is a member of the Tyro3-Axl-Mer (TAM) receptor tyrosine kinase subfamily. The encoded protein possesses an extracellular domain which is composed of two immunoglobulin-like motifs at the N-terminal; followed by two fibronectin type-III motifs. It transduces signals from the extracellular matrix into the cytoplasm by binding to the vitamin K-dependent protein growth arrest-specific 6 (Gas6). This gene may be involved in several cellular functions including growth; migration; aggregation and anti-inflammation in multiple cell types. Alternative splicing results in multiple transcript variants of this gene.
Usage	Research use only



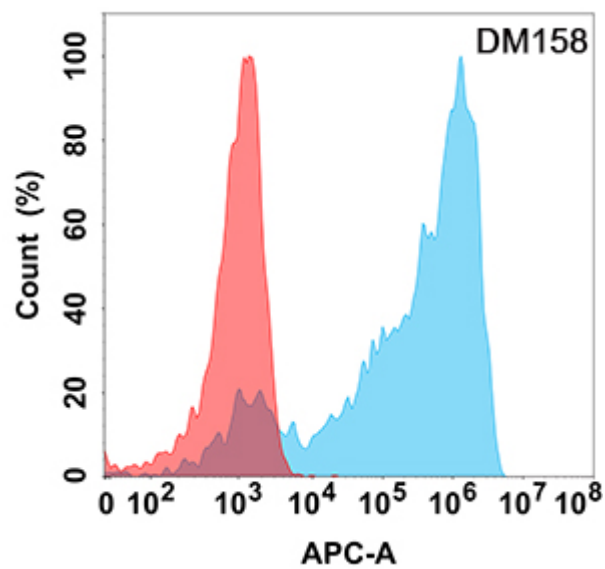


Figure 1. Flow cytometry analysis with Anti-AXL (DM158) on Expi293 cells transfected with human AXL (Blue histogram) or Expi293 transfected with irrelevant protein (Red histogram).

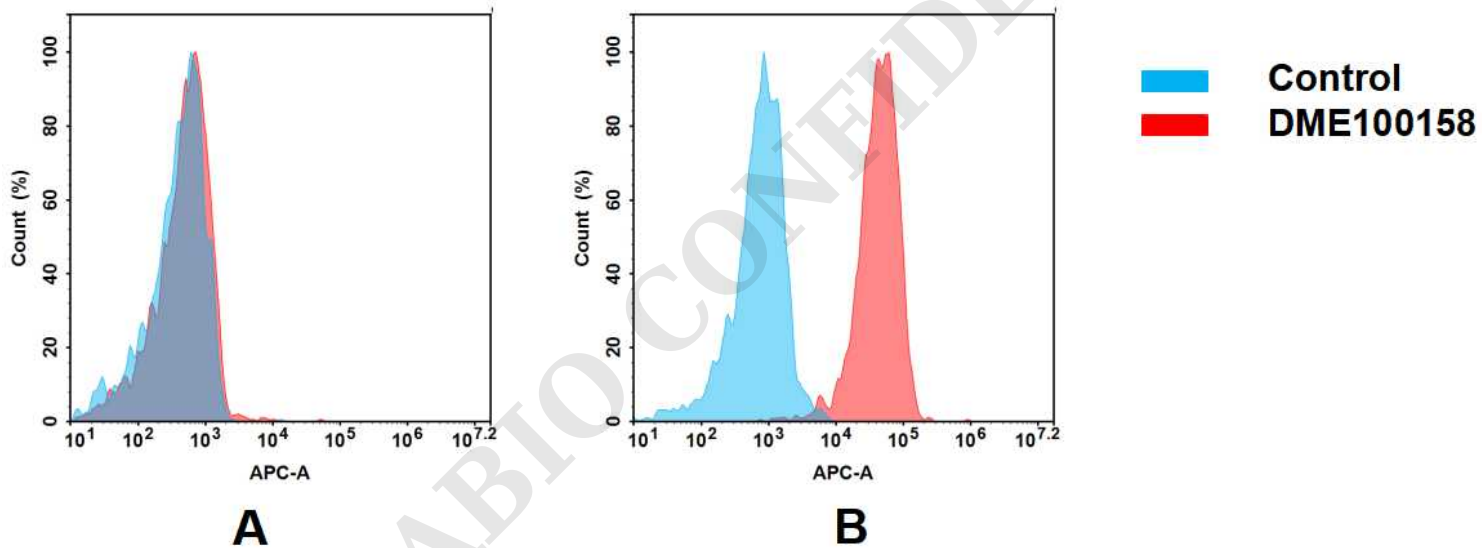


Figure 2. Flow cytometry analysis of antigen binding of rabbit anti-human AXL mAb(DME100158).

(A) DME100158 does not bind to 293T cells that do not express AXL.
(B) A clear peak shift of DME100158 was seen compared to the control when incubated with AXL-expressing Hela cells, indicating strong binding of DME100158 to AXL. Antibodies were incubated at 2 µg/mL.

