

**PRODUCT INFORMATION**

<b>Common Name</b>	MG-A271, MGA271
<b>Conjugate</b>	Unconjugated
<b>Synonyms</b>	B7-H3;CD276;B7 homolog 3
<b>Applications</b>	ELISA; Flow Cyt
<b>Endotoxin</b>	Less than 1.0 EU/μg by the LAL method. For <1 EU/mg requirements, please contact us for customization.
<b>Recommended Dilutions</b>	ELISA 1:5000-10000; Flow Cyt 1:100
<b>Formulation &amp; Reconstitution</b>	Lyophilized from sterile PBS, pH 7.4. Normally 5% - 8% trehalose is added as protectants before lyophilization. Please see Certificate of Analysis for specific instructions of reconstitution.
<b>Host Species</b>	Humanized
<b>IgG type</b>	Human IgG1 - kappa
<b>Reactivity</b>	Human
<b>Target</b>	B7-H3
<b>Uniprot ID</b>	Q5ZPR3
<b>Description</b>	Anti-B7-H3 (enoblituzumab biosimilar) mAb
<b>Delivery</b>	In Stock
<b>Storage&amp;Shipping</b>	Store at -20°C to -80°C for 12 months in lyophilized form. After reconstitution, if not intended for use within a month, aliquot and store at -80°C (Avoid repeated freezing and thawing). Lyophilized proteins are shipped at ambient temperature.
<b>Sterility</b>	Products are supplied non-sterile. For cell culture applications, dilute in appropriate medium and sterile-filter (0.22 μm) prior to use.
<b>Background</b>	Research grade biosimilar. Not for use in therapeutic or diagnostic procedures for humans or animals.
<b>Usage</b>	Research use only



## Anti-B7-H3 (enoblituzumab biosimilar) mAb ELISA

0.2  $\mu$ g of Human B7H3, mFc-His Tagged protein per well

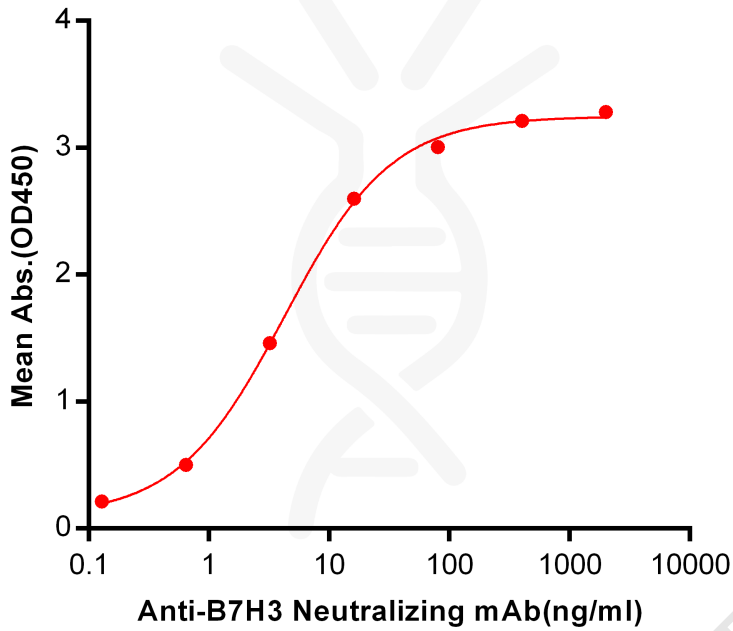


Figure 1. ELISA plate pre-coated by 2  $\mu$ g/ml (100  $\mu$ l/well) Human B7-H3, mFc-His tagged protein PME100012 can bind Anti-B7-H3 Neutralizing antibody in a linear range of 0.24-31.25 ng/ml.

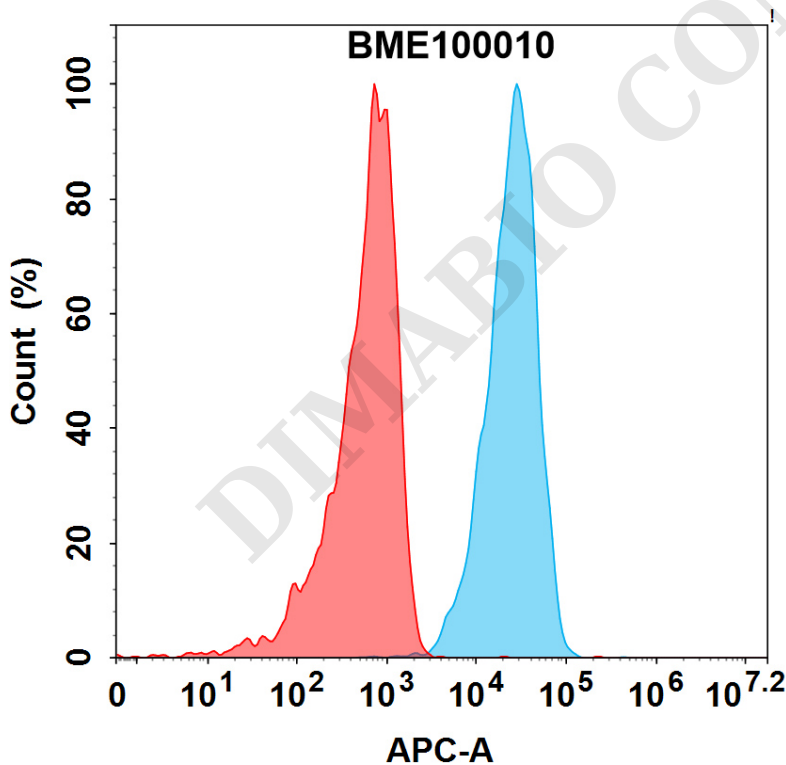


Figure 2. Flow cytometry analysis with 1 $\mu$ g/mL Anti-B7-H3 (enoblituzumab biosimilar) mAb (BME100010) on Hela cells (Blue histogram) or isotype control mAb on Hela cells (Red histogram).



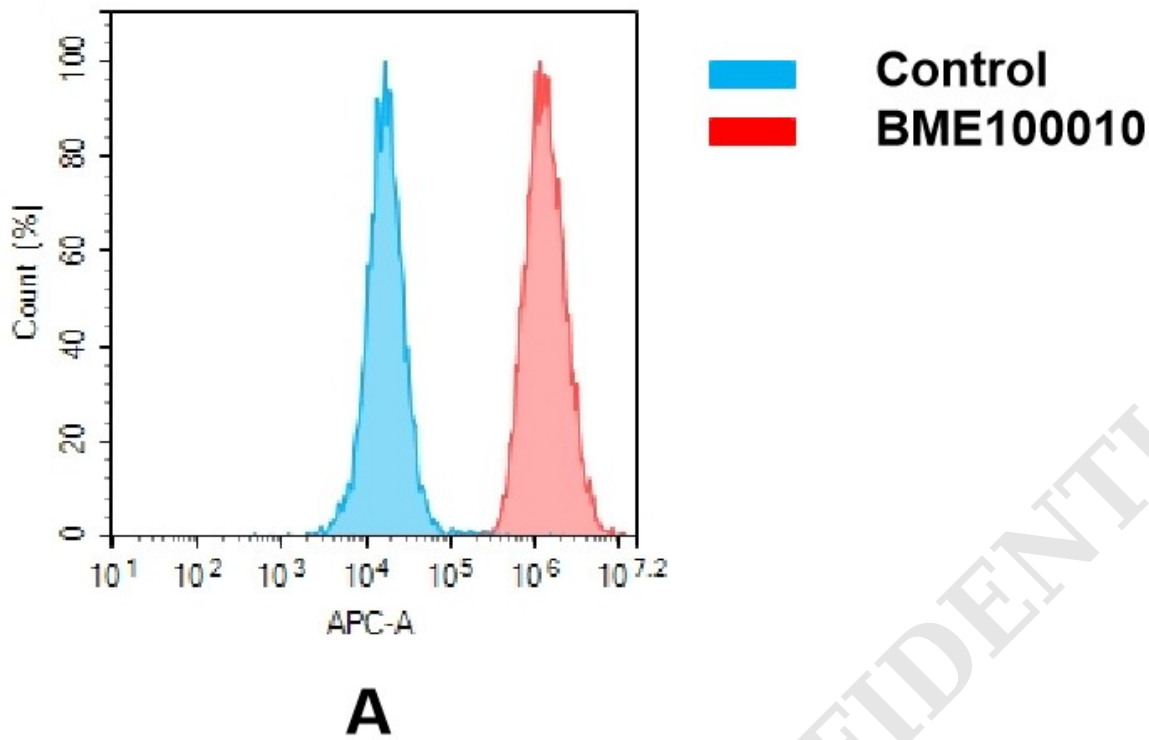


Figure 3. Flow cytometry analysis of antigen binding of anti-human B7-H3 mAb(BME100010). (A) A clear peak shift of BME100010 was seen compared to the control when incubated with B7-H3-expressing Hela cells, indicating strong binding of BME100010 to B7-H3. Antibodies were incubated at 2  $\mu$ g/mL.

