

PRODUCT INFORMATION

Clone ID	DM196
Target	CCR8
Synonyms	CC-CKR-8; CCR-8; CDw198; CKRL1; CMKBR8; CMKBRL2; CY6; GPRCY6; TER1
Host Species	Rabbit
Description	Anti-CCR8 antibody(DM196); Rabbit mAb
Delivery	In Stock
Uniprot ID	P51685
IgG type	Rabbit IgG
Clonality	Monoclonal
Reactivity	Human
Applications	ELISA; Flow Cyt
Recommended Dilutions	ELISA 1:5000-10000; Flow Cyt 1:100
Purification	Purified from cell culture supernatant by affinity chromatography
Formulation & Reconstitution	Lyophilized from sterile PBS, pH 7.4. Normally 5 % - 8% trehalose is added as protectants before lyophilization. Please see Certificate of Analysis for specific instructions of reconstitution.
Storage&Shipping	Store at -20°C to -80°C for 12 months in lyophilized form. After reconstitution, if not intended for use within a month, aliquot and store at -80°C (Avoid repeated freezing and thawing). Lyophilized proteins are shipped at ambient temperature.
Background	This gene encodes a member of the beta chemokine receptor family; which is predicted to be a seven transmembrane protein similar to G protein-coupled receptors. Chemokines and their receptors are important for the migration of various cell types into the inflammatory sites. This receptor protein preferentially expresses in the thymus. I-309; thymus activation-regulated cytokine (TARC) and macrophage inflammatory protein-1 beta (MIP-1 beta) have been identified as ligands of this receptor. Studies of this receptor and its ligands suggested its role in regulation of monocyte chemotaxis and thymic cell apoptosis. More specifically; this receptor may contribute to the proper positioning of activated T cells within the antigenic challenge sites and specialized areas of lymphoid tissues. This gene is located at the chemokine receptor gene cluster region.
Usage	Research use only
Conjugate	Unconjugated
DIMA Disclaimer	All DIMA recombinant antibodies are genuinely generated by DIMA Biotech. They are all under patent application. Any protein sequencing or reverse engineering attempt is prohibited. We are actively scrutinizing all patent application to ensure no IP infringement.



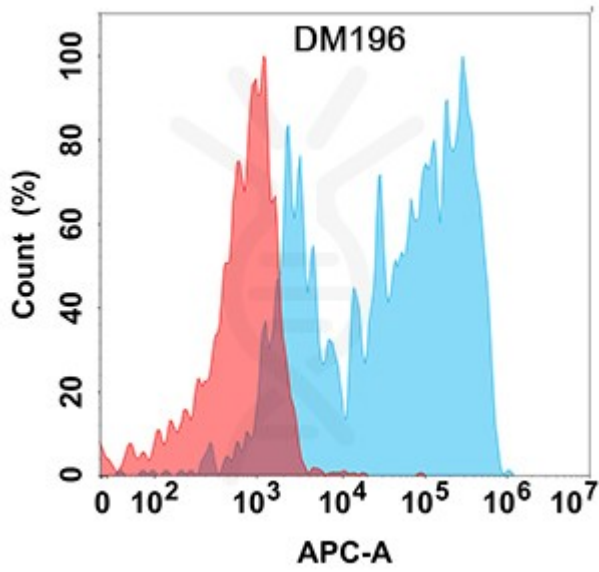


Figure 1. Flow cytometry analysis with Anti-CCR8 (DM196) on HEK293 cells transfected with human CCR8 (Blue histogram) or HEK293 transfected with irrelevant protein (Red histogram).

