

PRODUCT INFORMATION

Clone ID	DM155
Target	CD171
Synonyms	CAML1; CD171; HSAS; HSAS1; MASA; MIC5; N-CAM-L1; N-CAML1; NCAM-L1; S10; SPG1
Host Species	Rabbit
Description	Anti-CD171 antibody(DM155); Rabbit mAb
Delivery	In Stock
Uniprot ID	P32004
IgG type	Rabbit IgG
Clonality	Monoclonal
Reactivity	Human
Applications	ELISA; Flow Cyt
Recommended Dilutions	ELISA 1:5000-10000; Flow Cyt 1:100
Purification	Purified from cell culture supernatant by affinity chromatography
Formulation & Reconstitution	Lyophilized from sterile PBS, pH 7.4. Normally 5 % - 8% trehalose is added as protectants before lyophilization. Please see Certificate of Analysis for specific instructions of reconstitution.
Storage & Shipping	Store at -20°C to -80°C for 12 months in lyophilized form. After reconstitution, if not intended for use within a month, aliquot and store at -80°C (Avoid repeated freezing and thawing). Lyophilized proteins are shipped at ambient temperature.
Background	The protein encoded by this gene is an axonal glycoprotein belonging to the immunoglobulin supergene family. The ectodomain; consisting of several immunoglobulin-like domains and fibronectin-like repeats (type III); is linked via a single transmembrane sequence to a conserved cytoplasmic domain. This cell adhesion molecule plays an important role in nervous system development; including neuronal migration and differentiation. Mutations in the gene cause X-linked neurological syndromes known as CRASH (corpus callosum hypoplasia; retardation; aphasia; spastic paraplegia and hydrocephalus). Alternative splicing of this gene results in multiple transcript variants; some of which include an alternate exon that is considered to be specific to neurons.
Usage	Research use only



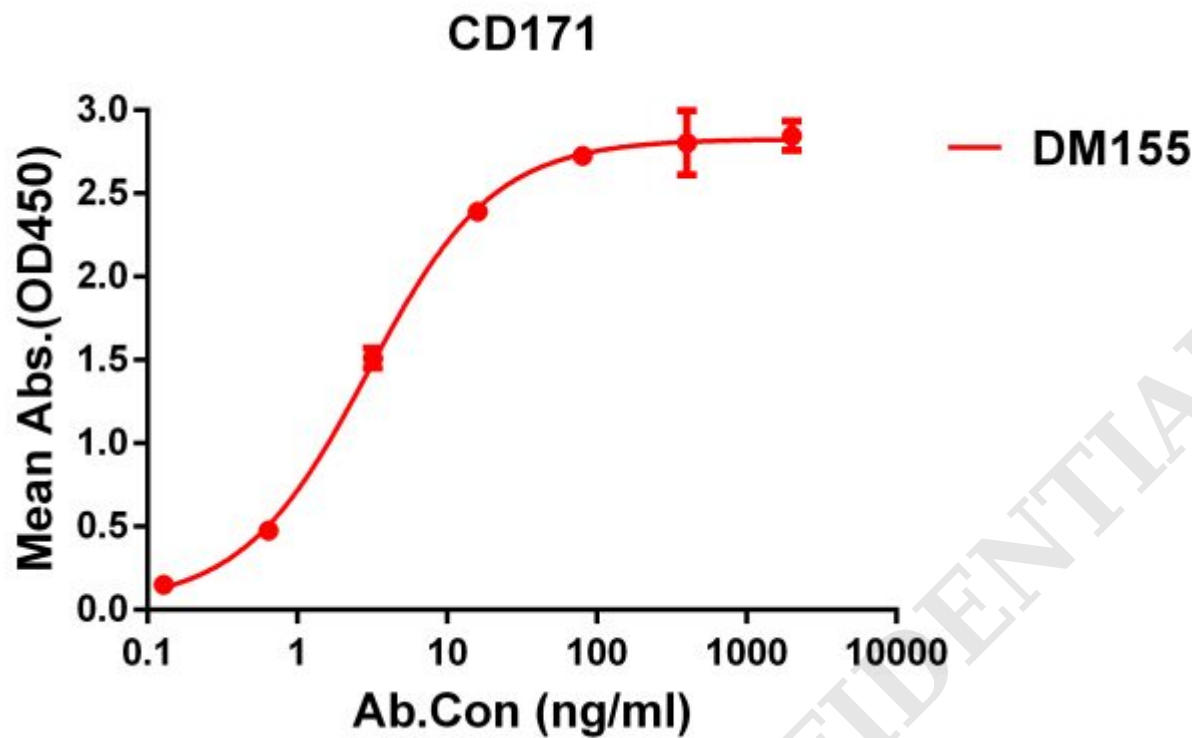


Figure 1. ELISA plate pre-coated by 1 µg/ml (100 µl/well) Human CD171 protein, His tagged protein ([getskuurl sku="PME100173"]) can bind Rabbit anti-CD171 monoclonal antibody(**clone: DM155**) in a linear range of 1-100 ng/ml.

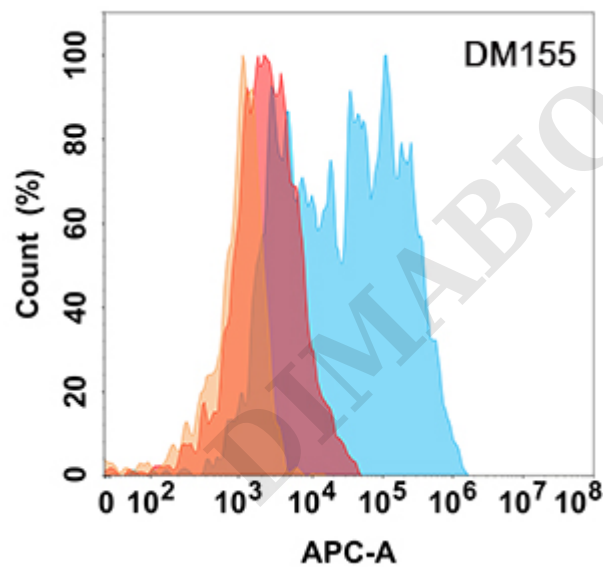


Figure 2. CD171 protein is highly expressed on the surface of Expi293 cell membrane. Flow cytometry analysis with Anti-CD171 (DM155) on Expi293 cells transfected with human CD171 (Blue histogram) or Expi293 transfected with irrelevant protein (Red histogram), and Isotype antibody on Expi293 transfected with irrelevant protein (Orange histogram).

