

PRODUCT INFORMATION

Common Name	IDEC-C2B8
Synonyms	B1;Bp35;CD20;CVID5;LEU-16;MS4A1;S7
Conjugate	Unconjugated
Applications	Flow Cyt
Endotoxin	Less than 1.0 EU/ μ g by the LAL method. For <1 EU/mg requirements, please contact us for customization.
Recommended Dilutions	Flow Cyt 1:100
Formulation & Reconstitution	Lyophilized from sterile PBS, pH 7.4. Normally 5% - 8% trehalose is added as protectants before lyophilization. Please see Certificate of Analysis for specific instructions of reconstitution.
Host Species	Chimeric
IgG type	Human IgG1 - kappa
Reactivity	Human
Target	CD20
Uniprot ID	P11836
Description	Anti-CD20 (rituximab biosimilar) mAb
Delivery	In Stock
Storage&Shipping	Store at -20°C to -80°C for 12 months in lyophilized form. After reconstitution, if not intended for use within a month, aliquot and store at -80°C (Avoid repeated freezing and thawing). Lyophilized proteins are shipped at ambient temperature.
Sterility	Products are supplied non-sterile. For cell culture applications, dilute in appropriate medium and sterile-filter (0.22 μ m) prior to use.
Background	Research grade biosimilar. Not for use in therapeutic or diagnostic procedures for humans or animals.
Usage	Research use only



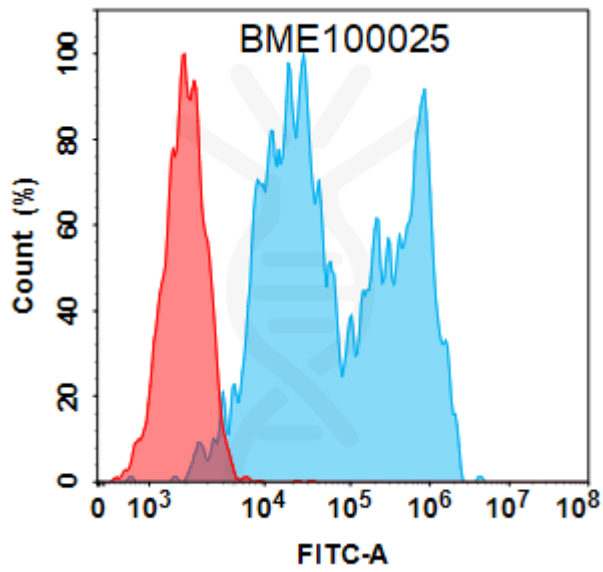


Figure 1. Flow cytometry analysis with 2 µg/mL Anti-CD20 (rituximab biosimilar) mAb (BME100025) on HEK293 cells transfected with Human CD20 protein (Blue histogram) or HEK293 transfected with irrelevant protein (Red histogram).

