

PRODUCT INFORMATION

Clone ID	DM211
Target	CD43
Synonyms	CD43; GALGP; GPL115; LSN
Host Species	Rabbit
Description	Anti-CD43 antibody(DM211); Rabbit mAb
Delivery	In Stock
Uniprot ID	P16150
IgG type	Rabbit IgG
Clonality	Monoclonal
Reactivity	Human
Applications	ELISA; Flow Cyt
Recommended Dilutions	ELISA 1:5000-10000; Flow Cyt 1:100
Purification	Purified from cell culture supernatant by affinity chromatography
Endotoxin	Less than 1.0 EU/μg by the LAL method. For <1 EU/mg requirements, please contact us for customization.
Formulation & Reconstitution	Lyophilized from sterile PBS, pH 7.4. Normally 5 % - 8% trehalose is added as protectants before lyophilization. Please see Certificate of Analysis for specific instructions of reconstitution.
Storage&Shipping	Store at -20°C to -80°C for 12 months in lyophilized form. After reconstitution, if not intended for use within a month, aliquot and store at -80°C (Avoid repeated freezing and thawing). Lyophilized proteins are shipped at ambient temperature.
Sterility	Products are supplied non-sterile. For cell culture applications, dilute in appropriate medium and sterile-filter (0.22 μm) prior to use.
Background	This gene encodes a highly sialylated glycoprotein that functions in antigen-specific activation of T cells; and is found on the surface of thymocytes; T lymphocytes; monocytes; granulocytes; and some B lymphocytes. It contains a mucin-like extracellular domain; a transmembrane region and a carboxy-terminal intracellular region. The extracellular domain has a high proportion of serine and threonine residues; allowing extensive O-glycosylation; and has one potential N-glycosylation site; while the carboxy-terminal region has potential phosphorylation sites that may mediate transduction of activation signals. Different glycoforms of this protein have been described. In stimulated immune cells; proteolytic cleavage of the extracellular domain occurs in some cell types; releasing a soluble extracellular fragment. Defects in expression of this gene are associated with Wiskott-Aldrich syndrome. [provided by RefSeq; Sep 2017]
Usage	Research use only
Conjugate	Unconjugated



DIMA Disclaimer

All DIMA recombinant antibodies are genuinely generated by DIMA Biotech. They are all under patent application. Any protein sequencing or reverse engineering attempt is prohibited. We are actively scr

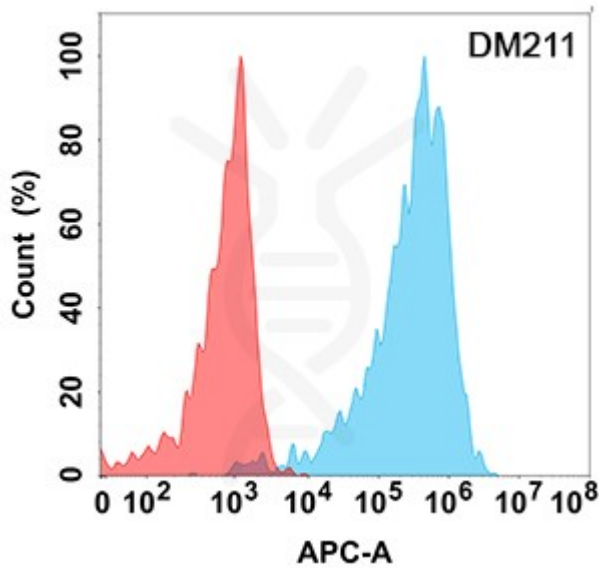


Figure 1. Flow cytometry analysis with Anti-CD43 (DM211) on HEK293 cells transfected with human CD43 (Blue histogram) or HEK293 transfected with irrelevant protein (Red histogram).

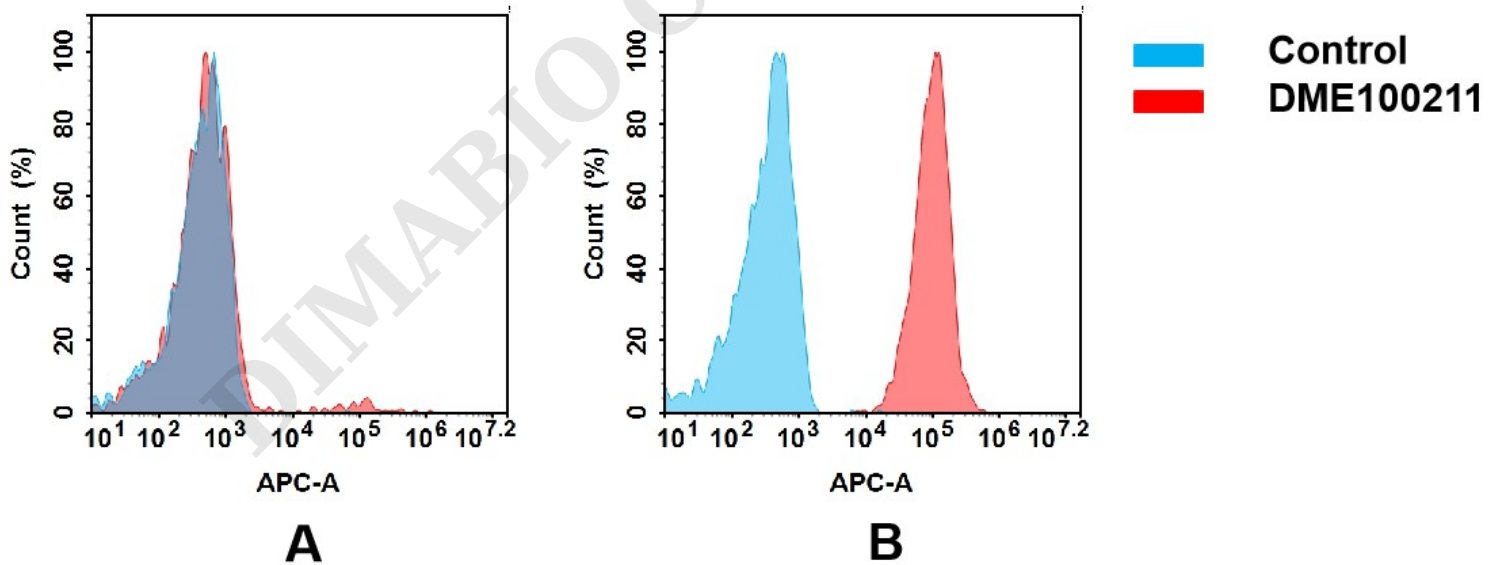


Figure 2. Flow cytometry analysis of antigen binding of rabbit anti-human CD43 mAb(DME100211).
 (A) DME100211 does not bind to CHO-S cells that do not express CD43.
 (B) A clear peak shift of DME100211 was seen compared to the control when incubated with CD43-expressing THP-1 cells, indicating strong binding of DME100211 to CD43. Antibodies were incubated at 5 µg/mL.

