

PRODUCT INFORMATION

|                              |  |
|------------------------------|--|
| Clone ID                     | DM212  |
| Target                       | CD47   |
| Synonyms                     | CD47; MER6; IAP; OA3   |
| Host Species                 | Rabbit   |
| Description                  | Anti-CD47 antibody(DM212); Rabbit mAb  |
| Delivery                     | In Stock   |
| Uniprot ID                   | Q08722   |
| IgG type                     | Rabbit IgG   |
| Clonality                    | Monoclonal   |
| Reactivity                   | Human  |
| Applications                 | ELISA; Flow Cyt  |
| Recommended Dilutions        | ELISA 1:5000-10000; Flow Cyt 1:100   |
| Purification                 | Purified from cell culture supernatant by affinity chromatography  |
| Formulation & Reconstitution | Lyophilized from sterile PBS, pH 7.4. Normally 5 % - 8% trehalose is added as protectants before lyophilization. Please see Certificate of Analysis for specific instructions of reconstitution.   |
| Storage & Shipping           | Store at -20°C to -80°C for 12 months in lyophilized form. After reconstitution, if not intended for use within a month, aliquot and store at -80°C (Avoid repeated freezing and thawing). Lyophilized proteins are shipped at ambient temperature.  |
| Background                   | Leukocyte surface antigen CD47 is also known as Antigenic surface determinant protein OA3; Integrin-associated protein (IAP) and Protein MER6. CD47 contains 1 Ig-like V-type (immunoglobulin-like) domain. CD47 is very broadly distributed on normal adult tissues. CD47 has a role in both cell adhesion by acting as an adhesion receptor for THBS1 on platelets; and in the modulation of integrins and plays an important role in memory formation and synaptic plasticity in the hippocampus by similarity. CD47 is the receptor for SIRPA; binding to which prevents maturation of immature dendritic cells and inhibits cytokine production by mature dendritic cells. CD47 Interaction with SIRPG mediates cell-cell adhesion; enhances superantigen-dependent T-cell-mediated proliferation and costimulates T-cell activation. |
| Usage                        | Research use only  |



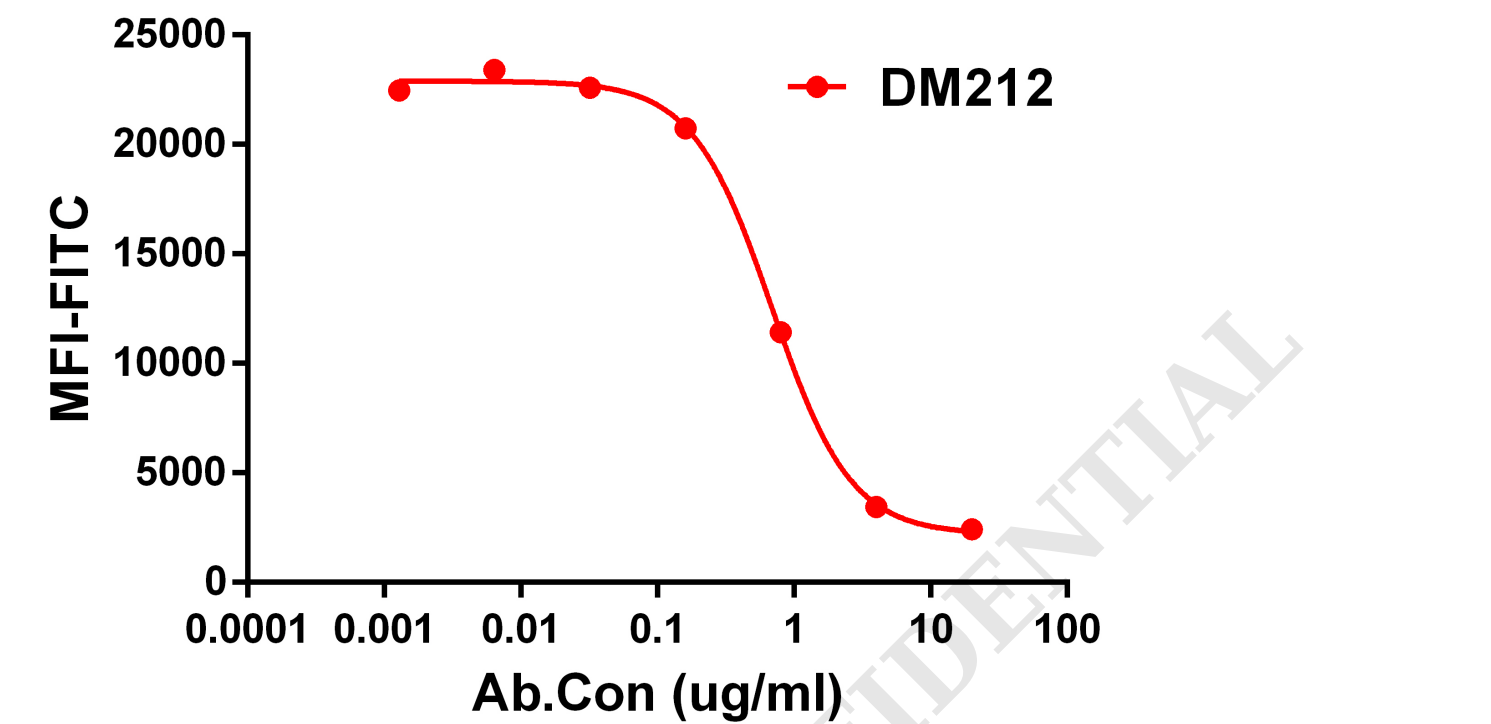


Figure 1. Competition assay demonstrating DM212 blockade of SIRPα binding to Jurkat cell line.

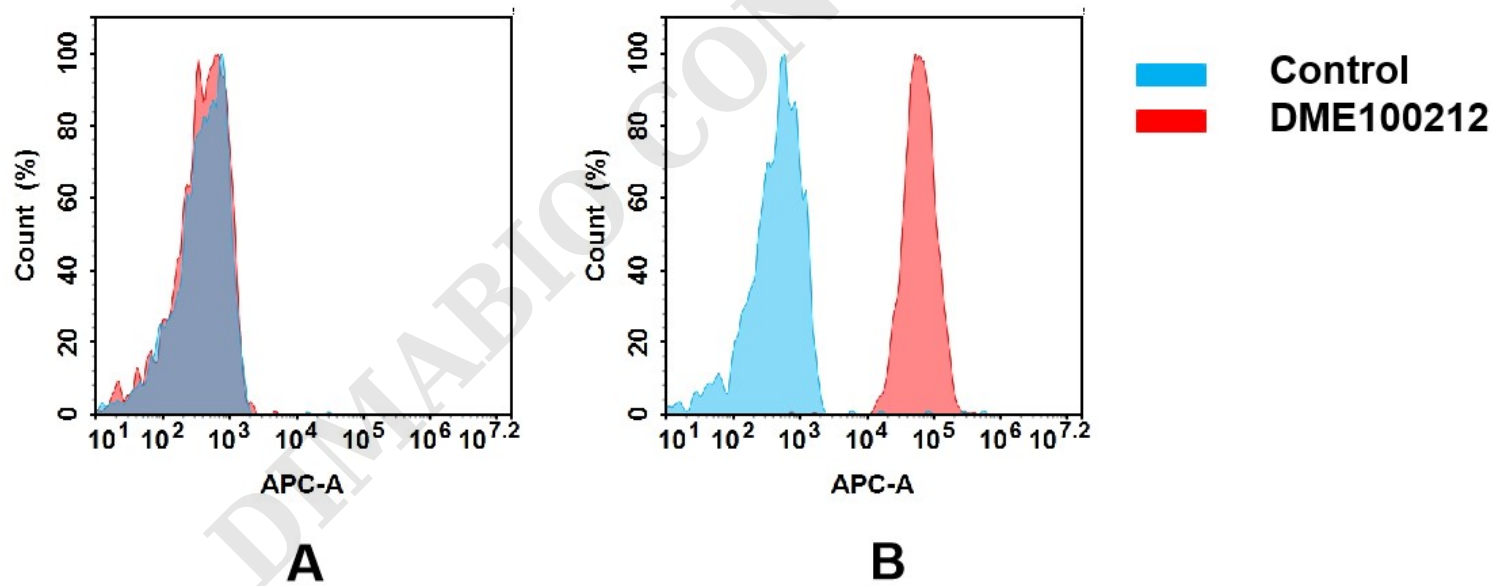


Figure 2. Flow cytometry analysis of antigen binding of rabbit anti-human CD47 mAb(DME100212).  
(A) DME100212 does not bind to CHO-S cells that do not express CD47.  
(B) A clear peak shift of DME100212 was seen compared to the control when incubated with CD47-expressing SNU-5 cells, indicating strong binding of DME100212 to CD47. Antibodies were incubated at 5 µg/ml.



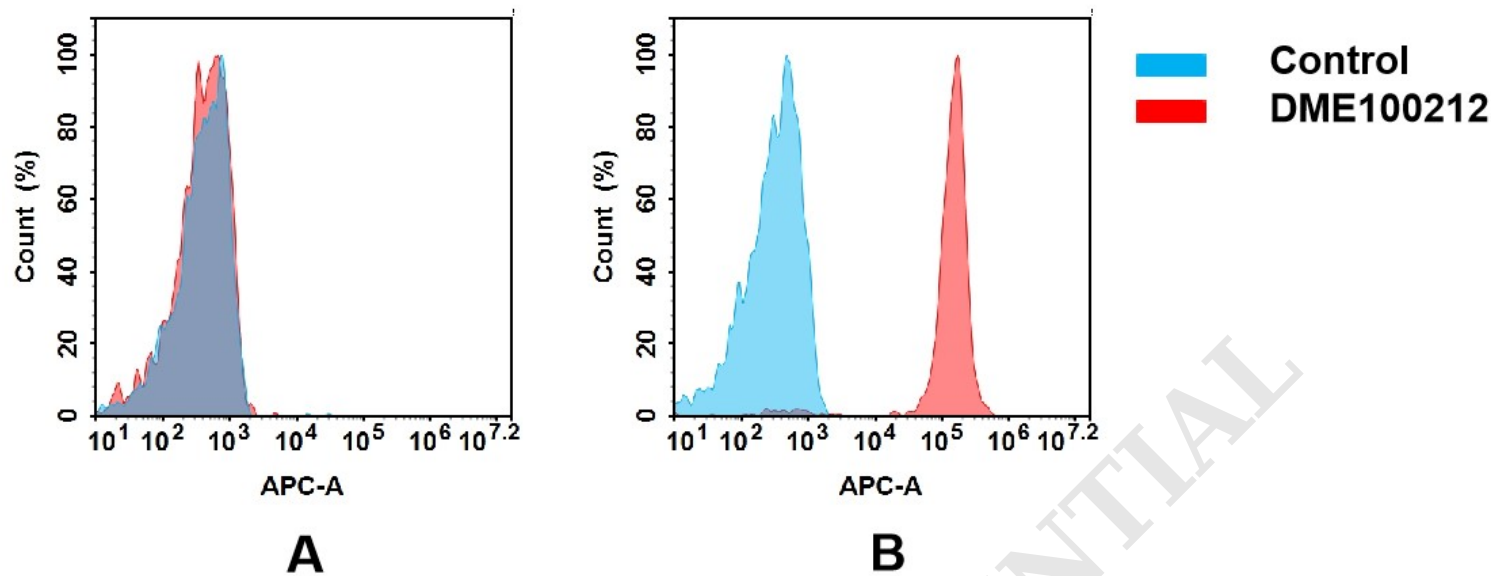


Figure 3. Flow cytometry analysis of antigen binding of rabbit anti-human CD47 mAb(DME100212).  
(A) DME100212 does not bind to CHO-S cells that do not express CD47.  
(B) A clear peak shift of DME100212 was seen compared to the control when incubated with CD47-expressing 8226 cells, indicating strong binding of DME100212 to CD47. Antibodies were incubated at 5  $\mu$ g/ml.

