

PRODUCT INFORMATION

Clone ID	DM121
Target	CEACAM5
Synonyms	CEACAM-5;CD66e;CEA;Meconium antigen 100
Host Species	Rabbit
Description	Anti-CEACAM5 antibody(DM121); Rabbit mAb
Delivery	In Stock
Uniprot ID	P06731
IgG type	Rabbit IgG
Clonality	Monoclonal
Reactivity	Human
Applications	ELISA; Flow Cyt
Recommended Dilutions	ELISA 1:5000-10000; Flow Cyt 1:100
Purification	Purified from cell culture supernatant by affinity chromatography
Endotoxin	Less than 1.0 EU/ μ g by the LAL method. For <1 EU/mg requirements, please contact us for customization.
Formulation & Reconstitution	Lyophilized from sterile PBS, pH 7.4. Normally 5 % - 8% trehalose is added as protectants before lyophilization. Please see Certificate of Analysis for specific instructions of reconstitution.
Storage&Shipping	Store at -20°C to -80°C for 12 months in lyophilized form. After reconstitution, if not intended for use within a month, aliquot and store at -80°C (Avoid repeated freezing and thawing). Lyophilized proteins are shipped at ambient temperature.
Sterility	Products are supplied non-sterile. For cell culture applications, dilute in appropriate medium and sterile-filter (0.22 μ m) prior to use.
Background	This gene encodes a cell surface glycoprotein that represents the founding member of the carcinoembryonic antigen (CEA) family of proteins. The encoded protein is used as a clinical biomarker for gastrointestinal cancers and may promote tumor development through its role as a cell adhesion molecule. Additionally; the encoded protein may regulate differentiation; apoptosis; and cell polarity. This gene is present in a CEA family gene cluster on chromosome 19. Alternative splicing results in multiple transcript variants.
Usage	Research use only
Conjugate	Unconjugated
DIMA Disclaimer	All DIMA recombinant antibodies are genuinely generated by DIMA Biotech. They are all under patent application. Any protein sequencing or reverse engineering attempt is prohibited. We are actively scr



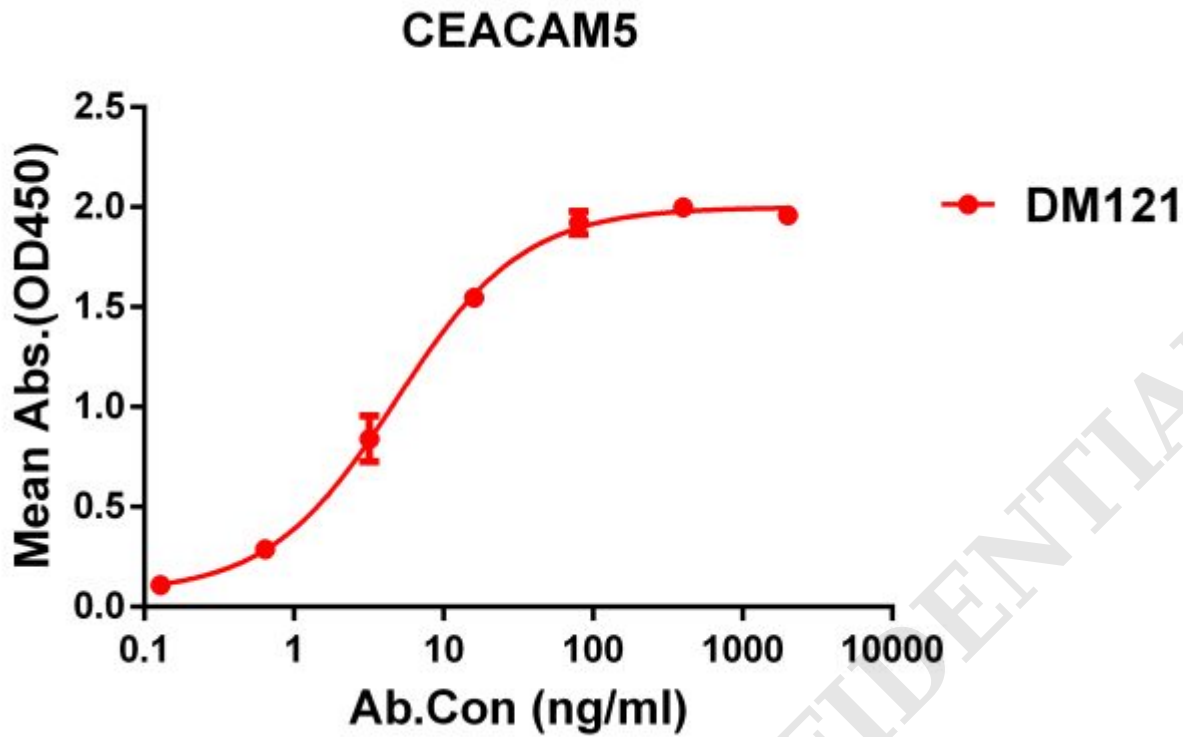


Figure 1. ELISA plate pre-coated by 1 $\mu\text{g/ml}$ (100 $\mu\text{l/well}$) Human CEACAM5 protein, His tagged protein ([getskuurl sku="PME100071"]) can bind Rabbit anti-CEACAM5 monoclonal antibody (**clone: DM121**) in a linear range of 0.1-50 ng/ml.

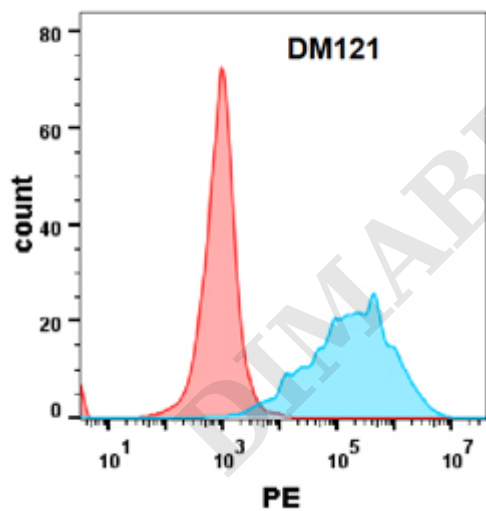


Figure 2. Flow cytometry analysis with Anti-CEACAM5 (**DM121**) on HEK293 cells transfected with human CEACAM5(Blue histogram) or HEK293 transfected with irrelevant protein (Red histogram).

