

PRODUCT INFORMATION

|                              |                                                                                                                                                                                                                                                     |
|------------------------------|-----------------------------------------------------------------------------------------------------------------------------------------------------------------------------------------------------------------------------------------------------|
| Common Name                  | BMS-901608, HuLuc63, PDL-063, PDL063                                                                                                                                                                                                                |
| Synonyms                     | CS1;CD319;SLAMF7;CRACC                                                                                                                                                                                                                              |
| Applications                 | ELISA; Flow Cyt                                                                                                                                                                                                                                     |
| Recommended Dilutions        | ELISA 1:5000-10000; Flow Cyt 1:100                                                                                                                                                                                                                  |
| Formulation & Reconstitution | Lyophilized from sterile PBS, pH 7.4. Normally 5 % - 8% trehalose is added as protectants before lyophilization. Please see Certificate of Analysis for specific instructions of reconstitution.                                                    |
| Host Species                 | Humanized                                                                                                                                                                                                                                           |
| IgG type                     | IgG1                                                                                                                                                                                                                                                |
| Reactivity                   | Human                                                                                                                                                                                                                                               |
| Target                       | CS1                                                                                                                                                                                                                                                 |
| Uniprot ID                   | Q9NQ25                                                                                                                                                                                                                                              |
| Description                  | Anti-CS1 (elotuzumab biosimilar) mAb                                                                                                                                                                                                                |
| Delivery                     | In Stock                                                                                                                                                                                                                                            |
| Storage & Shipping           | Store at -20°C to -80°C for 12 months in lyophilized form. After reconstitution, if not intended for use within a month, aliquot and store at -80°C (Avoid repeated freezing and thawing). Lyophilized proteins are shipped at ambient temperature. |
| Background                   | Research grade biosimilar. Not for use in therapeutic or diagnostic procedures for humans or animals.                                                                                                                                               |
| Usage                        | Research use only                                                                                                                                                                                                                                   |



Anti-CS1 (elotuzumab biosimilar) mAb ELISA

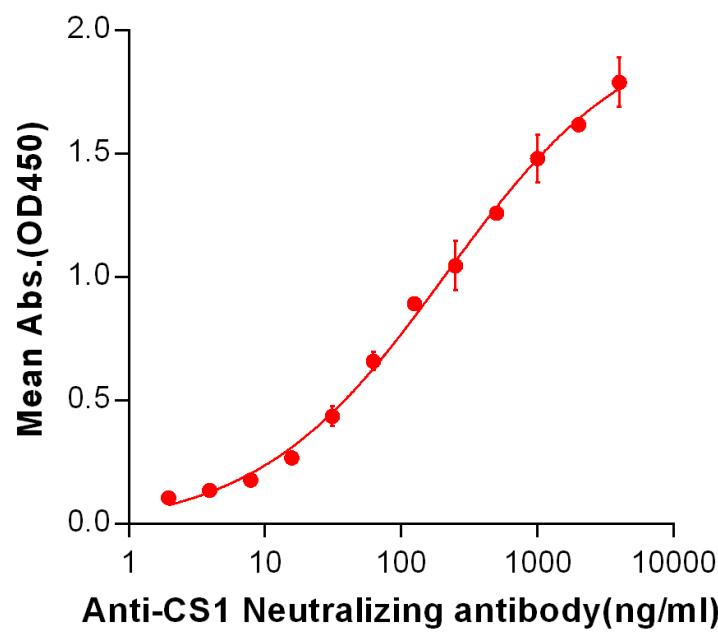


Figure 1. ELISA plate pre-coated by 2 µg/ml (100 µL/well) Human CS1, hFc-His tagged protein (PME100002) can bind Anti-CS1 Neutralizing antibody in a linear range of 7.81-210.7 ng/ml. In order to specifically detect BME100002, mouse anti-human Fab-specific antibody was used as detection antibody.

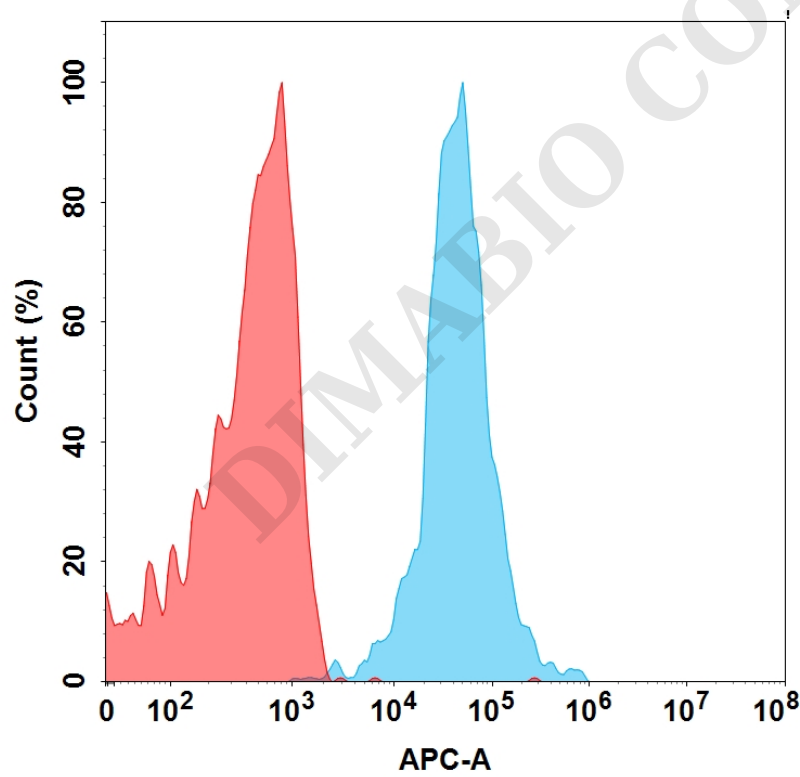


Figure 2. Flow cytometry analysis with 15 µg/mL Anti-CS1 (elotuzumab) mAb (BME100002) on Expi293 cells transfected with Human CS1 protein (Blue histogram) or Expi293 transfected with irrelevant protein (Red histogram).

