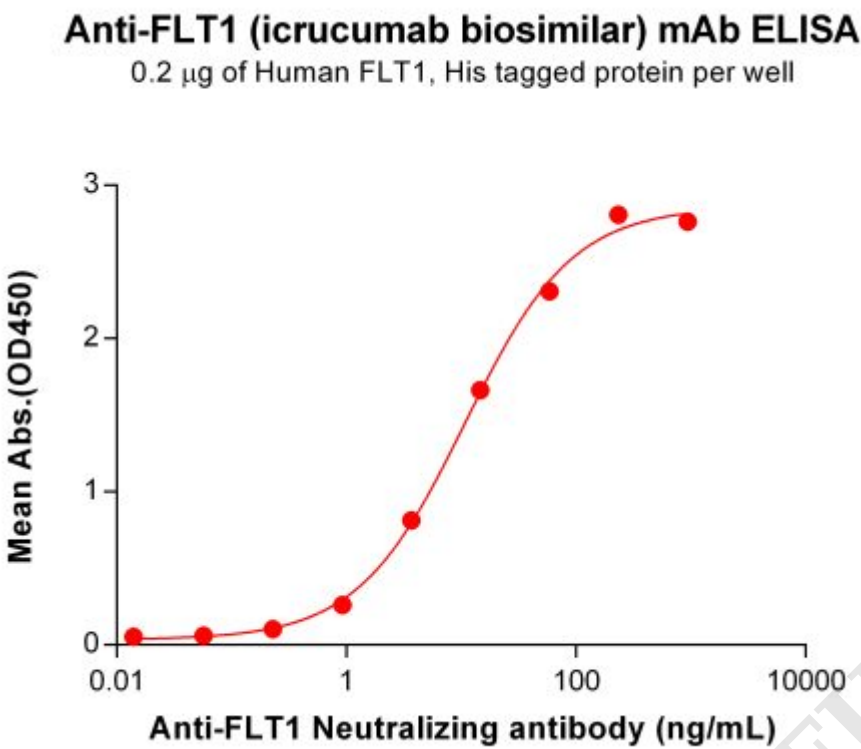


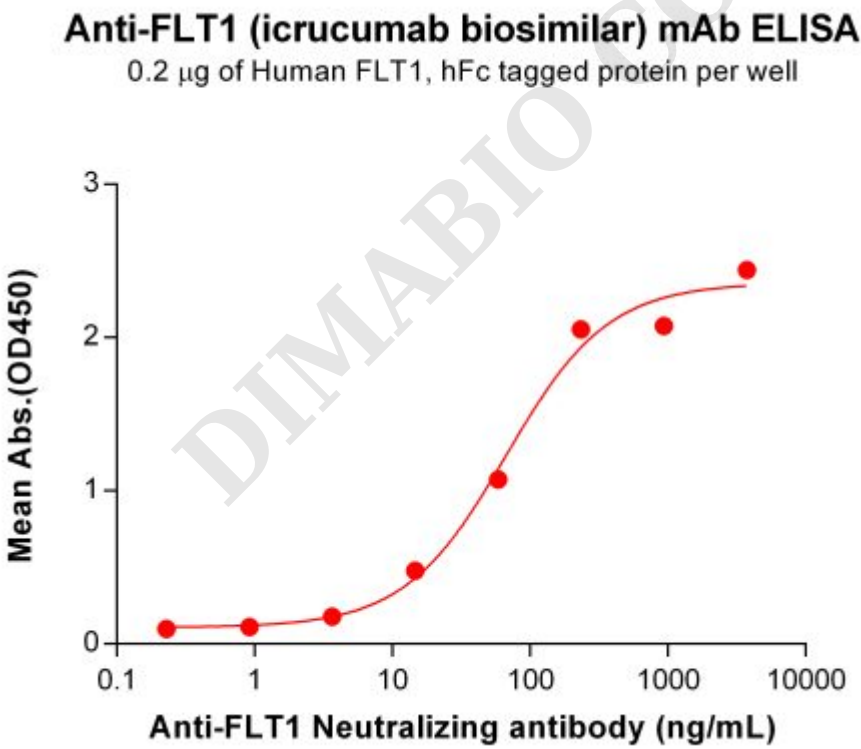
PRODUCT INFORMATION

Common Name	18F1, IMC-18F1, LY3012212
Synonyms	FLT;FLT-1;VEGFR-1;VEGFR1
Applications	ELISA; Flow Cyt
Recommended Dilutions	ELISA 1:5000-10000; Flow Cyt 1:100
Formulation & Reconstitution	Lyophilized from sterile PBS, pH 7.4. Normally 5 % - 8% trehalose is added as protectants before lyophilization. Please see Certificate of Analysis for specific instructions of reconstitution.
Host Species	Homo sapiens
IgG type	IgG1
Reactivity	Human
Target	FLT1
Uniprot ID	P17948
Description	Anti-FLT1(icrucumab biosimilar) mAb
Delivery	In Stock
Storage & Shipping	Store at -20°C to -80°C for 12 months in lyophilized form. After reconstitution, if not intended for use within a month, aliquot and store at -80°C (Avoid repeated freezing and thawing). Lyophilized proteins are shipped at ambient temperature.
Background	Research grade biosimilar. Not for use in therapeutic or diagnostic procedures for humans or animals.
Usage	Research use only



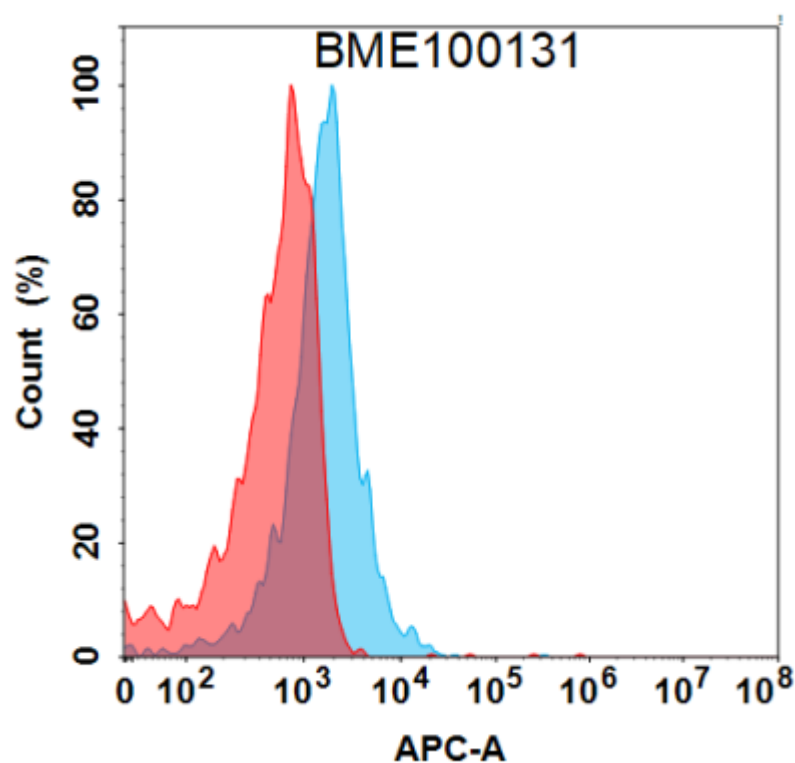


**Figure 1.** ELISA plate pre-coated by 2  $\mu$ g/mL (100  $\mu$ L/well) Human FLT1 Protein, His Tag ([getskuurl sku="PME100726"]) can bind Anti-FLT1 Neutralizing antibody (BME100131) in a linear range of 0.92-234.38 ng/mL.



**Figure 2.** ELISA plate pre-coated by 2  $\mu$ g/mL (100  $\mu$ L/well) Human FLT1 Protein, hFc Tag (PME101032) can bind Anti-FLT1 Neutralizing antibody (BME100131) in a linear range of 3.66-234.38 ng/mL. In order to specifically detect BME100131, mouse anti-human Fab-specific antibody was used as detection antibody.





**Figure 3.** Flow cytometry analysis with 1  $\mu$ g/mL Anti-FLT1 (icrucumab biosimilar) mAb (BME100131) on Expi293 cells transfected with Human FLT1 protein (Blue histogram) or Expi293 transfected with irrelevant protein (Red histogram).

