

PRODUCT INFORMATION

Common Name	BMS-986015, IPH2102
Conjugate	Unconjugated
Synonyms	CD158b;CD158B1;NKAT-6;NKAT6;p58.2
Applications	Flow Cyt
Endotoxin	Less than 1.0 EU/μg by the LAL method. For <1 EU/mg requirements, please contact us for customization.
Recommended Dilutions	Flow Cyt 1:100
Formulation & Reconstitution	Lyophilized from sterile PBS, pH 7.4. Normally 5% - 8% trehalose is added as protectants before lyophilization. Please see Certificate of Analysis for specific instructions of reconstitution.
Host Species	Homo sapiens
IgG type	Human IgG4 - Kappa
Reactivity	Human
Target	KIR2DL2
Uniprot ID	P43627
Description	Anti-KIR2DL2(lirilumab biosimilar) mAb
Delivery	In Stock
Storage&Shipping	Store at -20°C to -80°C for 12 months in lyophilized form. After reconstitution, if not intended for use within a month, aliquot and store at -80°C (Avoid repeated freezing and thawing). Lyophilized proteins are shipped at ambient temperature.
Sterility	Products are supplied non-sterile. For cell culture applications, dilute in appropriate medium and sterile-filter (0.22 μm) prior to use.
Background	Research grade biosimilar. Not for use in therapeutic or diagnostic procedures for humans or animals.
Usage	Research use only



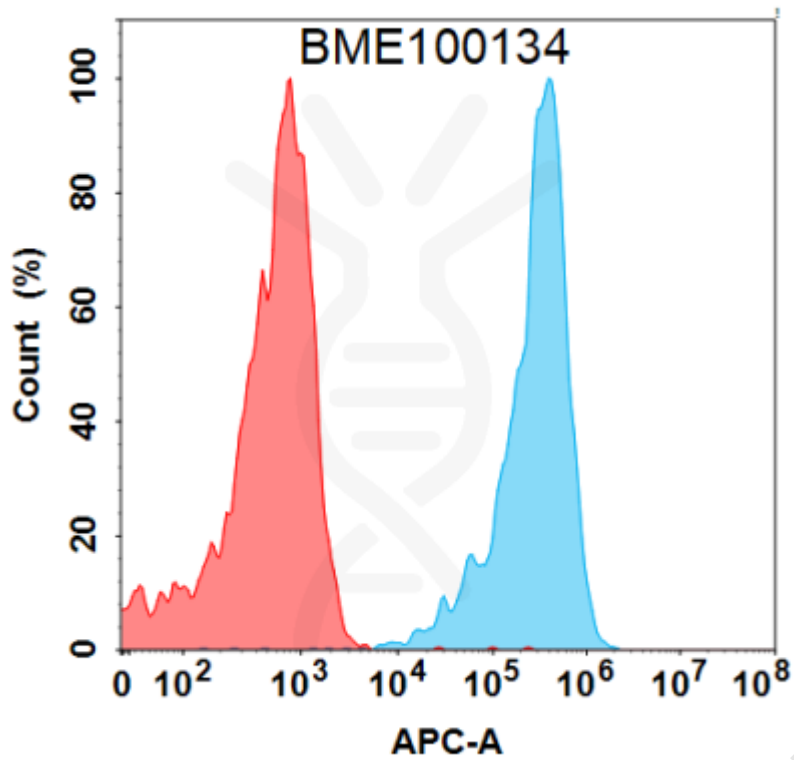


Figure 1. Flow cytometry analysis with 1 µg/mL Anti-KIR2DL2 (lirilumab biosimilar) mAb (BME100134) on HEK293 cells transfected with Human KIR2DL2 protein (Blue histogram) or HEK293 transfected with irrelevant protein (Red histogram).

