

PRODUCT INFORMATION

Common Name	MK-4830
Conjugate	Unconjugated
Synonyms	LIR-2;ILT-4;MIR-10;CD85d
Applications	ELISA; Flow Cyt
Endotoxin	Less than 1.0 EU/ μ g by the LAL method. For <1 EU/mg requirements, please contact us for customization.
Recommended Dilutions	ELISA 1:5000-10000; Flow Cyt 1:100
Formulation & Reconstitution	Lyophilized from sterile PBS, pH 7.4. Normally 5% - 8% trehalose is added as protectants before lyophilization. Please see Certificate of Analysis for specific instructions of reconstitution.
Host Species	Humanized
IgG type	Human IgG4 - Lambda1
Reactivity	Human
Target	LILRB2
Uniprot ID	Q8N423
Description	Anti-LILRB2 (MK-4830) mAb
Delivery	In Stock
Storage&Shipping	Store at -20°C to -80°C for 12 months in lyophilized form. After reconstitution, if not intended for use within a month, aliquot and store at -80°C (Avoid repeated freezing and thawing). Lyophilized proteins are shipped at ambient temperature.
Sterility	Products are supplied non-sterile. For cell culture applications, dilute in appropriate medium and sterile-filter (0.22 μ m) prior to use.
Background	Research grade biosimilar. Not for use in therapeutic or diagnostic procedures for humans or animals.
Usage	Research use only



Anti-LILRB2 (MK-4830) mAb ELISA

0.2 μ g of Human LILRB2, His tagged protein per well

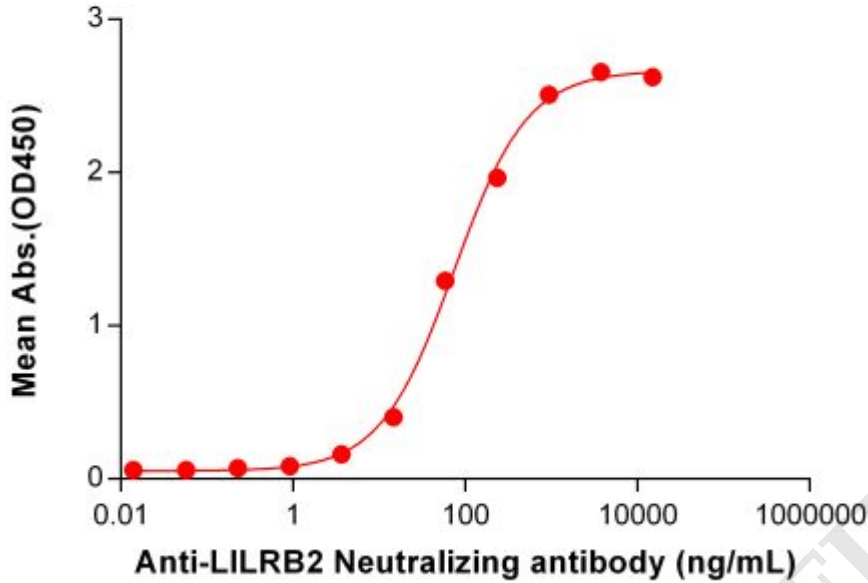


Figure 1. ELISA plate pre-coated by 2 μ g/mL (100 μ L/well) Human LILRB2 Protein, His Tag ([getskuurl sku="PME100745"]) can bind Anti-LILRB2 Neutralizing antibody (BME100145) in a linear range of 3.66–937.50 ng/mL.

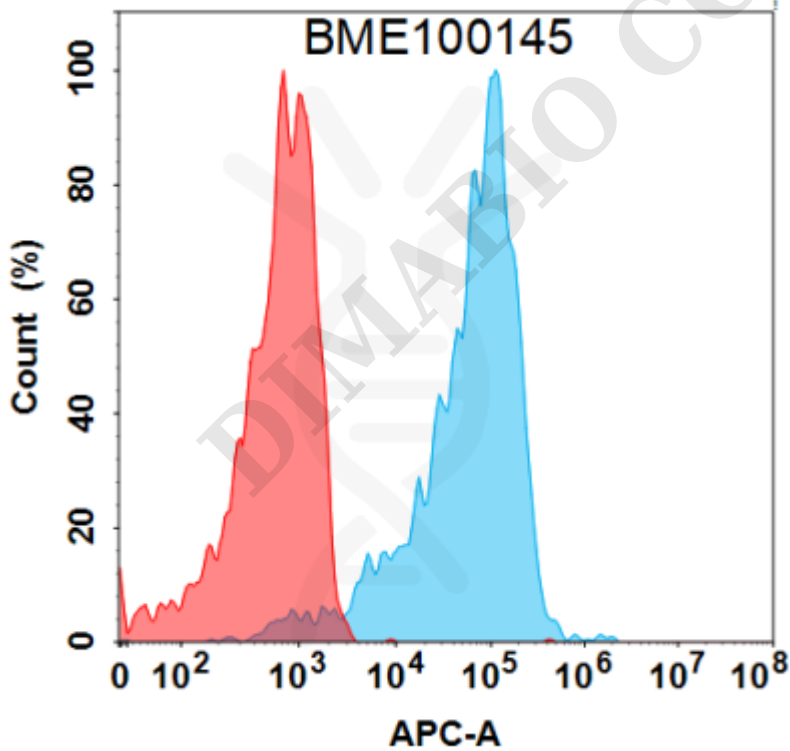


Figure 2. Flow cytometry analysis with 1 μ g/mL Anti-LILRB2 (MK-4830) mAb (BME100145) on HEK293 cells transfected with Human LILRB2 protein (Blue histogram) or HEK293 transfected with irrelevant protein (Red histogram).

