

PRODUCT INFORMATION

Clone ID	DM177
Target	PD-1
Synonyms	PDCD1; PD1; CD279; SLEB2
Host Species	Rabbit
Description	Anti-PD-1 antibody(DM177); Rabbit mAb
Delivery	In Stock
Uniprot ID	Q15116
IgG type	Rabbit IgG
Clonality	Monoclonal
Reactivity	Human
Applications	ELISA; Flow Cyt
Recommended Dilutions	ELISA 1:5000-10000; Flow Cyt 1:100
Purification	Purified from cell culture supernatant by affinity chromatography
Formulation & Reconstitution	Lyophilized from sterile PBS, pH 7.4. Normally 5 % - 8% trehalose is added as protectants before lyophilization. Please see Certificate of Analysis for specific instructions of reconstitution.
Storage & Shipping	Store at -20°C to -80°C for 12 months in lyophilized form. After reconstitution, if not intended for use within a month, aliquot and store at -80°C (Avoid repeated freezing and thawing). Lyophilized proteins are shipped at ambient temperature.
Background	This protein is expressed in pro-B-cells and is thought to play a role in their differentiation. In mice; expression of this gene is induced in the thymus when anti-CD3 antibodies are injected and large numbers of thymocytes undergo apoptosis. Mice deficient for this gene bred on a BALB:c background developed dilated cardiomyopathy and died from congestive heart failure. These studies suggest that this gene product may also be important in T cell function and contribute to the prevention of autoimmune diseases.
Usage	Research use only
Conjugate	Unconjugated



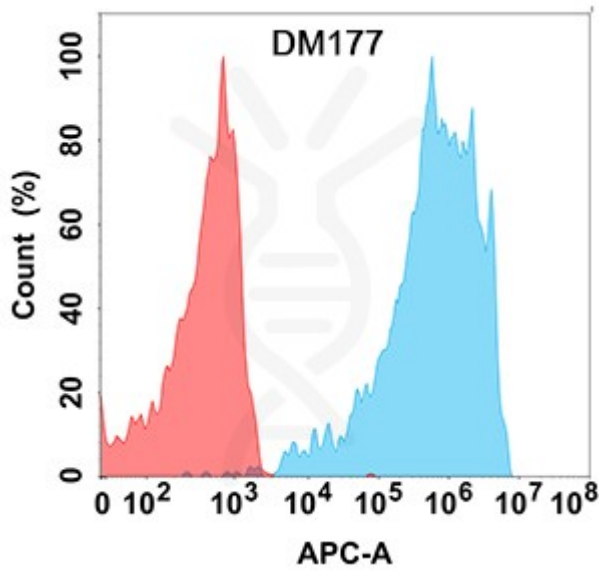


Figure 1. Flow cytometry analysis with Anti-PD-1 (DM177) on Expi293 cells transfected with human PD-1 (Blue histogram) or Expi293 transfected with irrelevant protein (Red histogram).

DIMABIO CONFIDENTIAL

