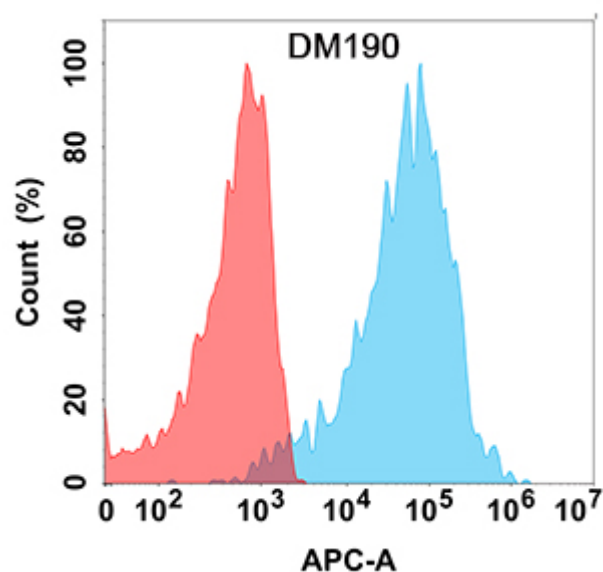


PRODUCT INFORMATION

Clone ID	DM190
Target	PGF
Synonyms	D12S1900; PGFL; PIGF; PLGF; PIGF-2; SHGC-10760
Host Species	Rabbit
Description	Anti-PGF antibody(DM190); Rabbit mAb
Delivery	In Stock
Uniprot ID	P49763
IgG type	Rabbit IgG
Clonality	Monoclonal
Reactivity	Human
Applications	ELISA; Flow Cyt
Recommended Dilutions	ELISA 1:5000-10000; Flow Cyt 1:100
Purification	Purified from cell culture supernatant by affinity chromatography
Formulation & Reconstitution	Lyophilized from sterile PBS, pH 7.4. Normally 5 % - 8% trehalose is added as protectants before lyophilization. Please see Certificate of Analysis for specific instructions of reconstitution.
Storage & Shipping	Store at -20°C to -80°C for 12 months in lyophilized form. After reconstitution, if not intended for use within a month, aliquot and store at -80°C (Avoid repeated freezing and thawing). Lyophilized proteins are shipped at ambient temperature.
Background	This gene encodes a growth factor found in placenta which is homologous to vascular endothelial growth factor. Alternatively spliced transcripts encoding different isoforms have been found for this gene.
Usage	Research use only





**Figure 1.** Flow cytometry analysis with Anti-PGF (DM190) on Expi293 cells transfected with human PGF (Blue histogram) or Expi293 transfected with irrelevant protein (Red histogram).

DIMABIO CONFIDENTIAL

