

PRODUCT INFORMATION

Common Name	J-591, MLN-591, huj-591
Conjugate	Unconjugated
Synonyms	FGCP;FOLH;GCP2;GCPII;mGCP;NAALAD1;NAALAdase;PSM
Applications	ELISA; Flow Cyt
Endotoxin	Less than 1.0 EU/μg by the LAL method. For <1 EU/mg requirements, please contact us for customization.
Recommended Dilutions	ELISA 1:5000-10000; Flow Cyt 1:100
Formulation & Reconstitution	Lyophilized from sterile PBS, pH 7.4. Normally 5 % - 8% trehalose is added as protectants before lyophilization. Please see Certificate of Analysis for specific instructions of reconstitution.
Host Species	Chimeric
IgG type	Human IgG1 - kappa
Reactivity	Human
Target	PSMA
Uniprot ID	Q04609
Description	Anti-PSMA(rosopatamab biosimilar) mAb
Delivery	In Stock
Storage&Shipping	Store at -20°C to -80°C for 12 months in lyophilized form. After reconstitution, if not intended for use within a month, aliquot and store at -80°C (Avoid repeated freezing and thawing). Lyophilized proteins are shipped at ambient temperature.
Sterility	Products are supplied non-sterile. For cell culture applications, dilute in appropriate medium and sterile-filter (0.22 μm) prior to use.
Background	Research grade biosimilar. Not for use in therapeutic or diagnostic procedures for humans or animals.
Usage	Research use only



Anti-PSMA (rosopatamab biosimilar) mAb ELISA

0.2 µg of Human PSMA, His tagged protein per well

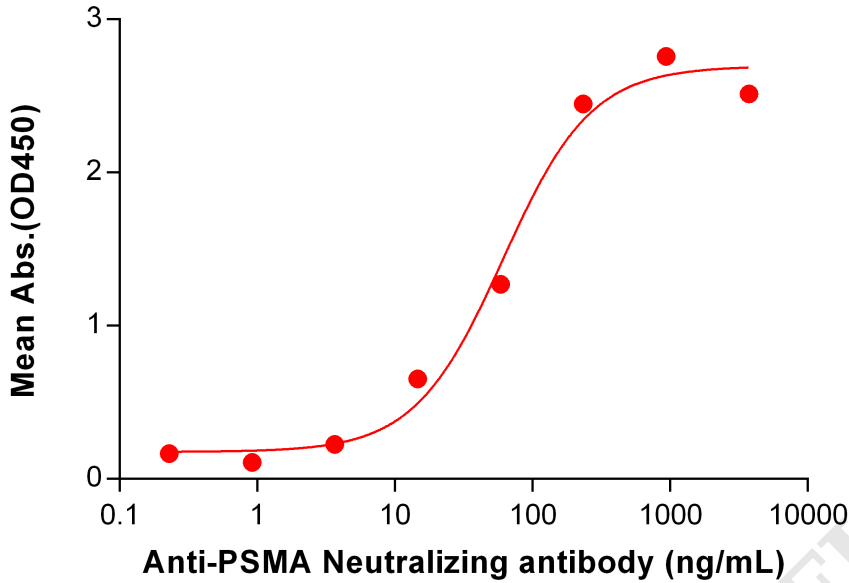


Figure 1. ELISA plate pre-coated by 2 µg/mL (100 µL/well) Human PSMA Protein, His Tag PME100545 can bind Anti-PSMA Neutralizing antibody (BME100128) in a linear range of 3.66-234.38 ng/mL.

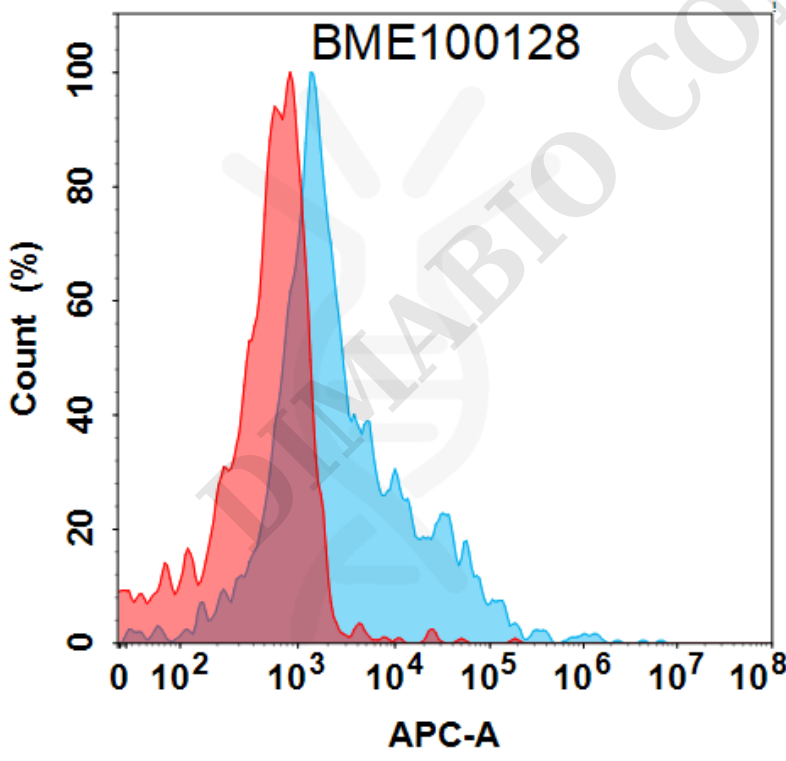


Figure 2. Flow cytometry analysis with 15 µg/mL Anti-PSMA (rosopatamab biosimilar) mAb (BME100128) on HEK293 cells transfected with Human PSMA protein (Blue histogram) or HEK293 transfected with irrelevant protein (Red histogram).



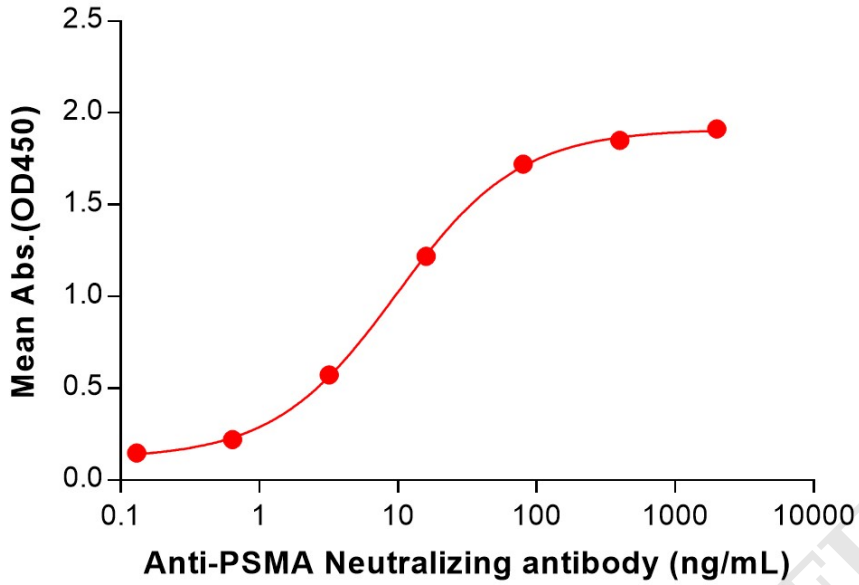
Anti-PSMA(rosopatamab biosimilar) mAb ELISA0.2 μg of Human PSMA, hFc tagged protein per well

Figure 3. ELISA plate pre-coated by 2 $\mu\text{g}/\text{mL}$ (100 $\mu\text{L}/\text{well}$) Human PSMA Protein, hFc Tag (PME100390) can bind Anti-PSMA(rosopatamab biosimilar) mAb (BME100128) in a linear range of 3.20-80 ng/mL. In order to specifically detect BME100128, mouse anti-human Fab-specific antibody was used as detection antibody.

