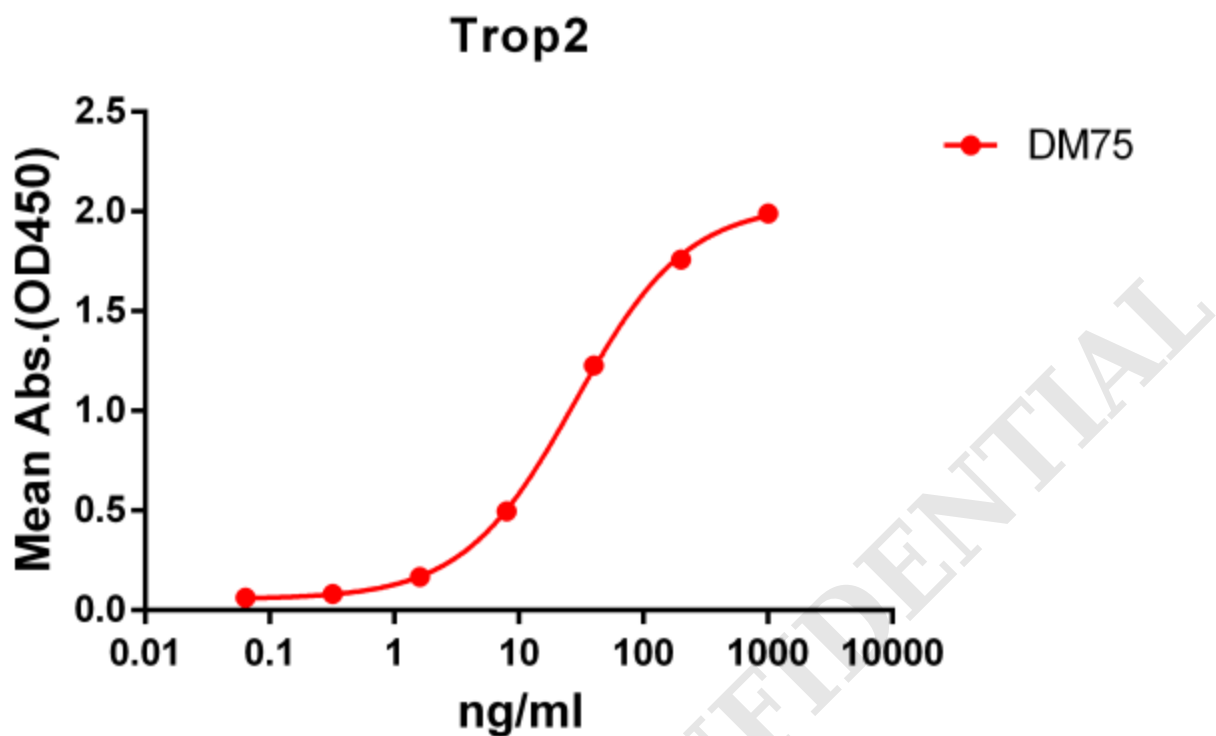


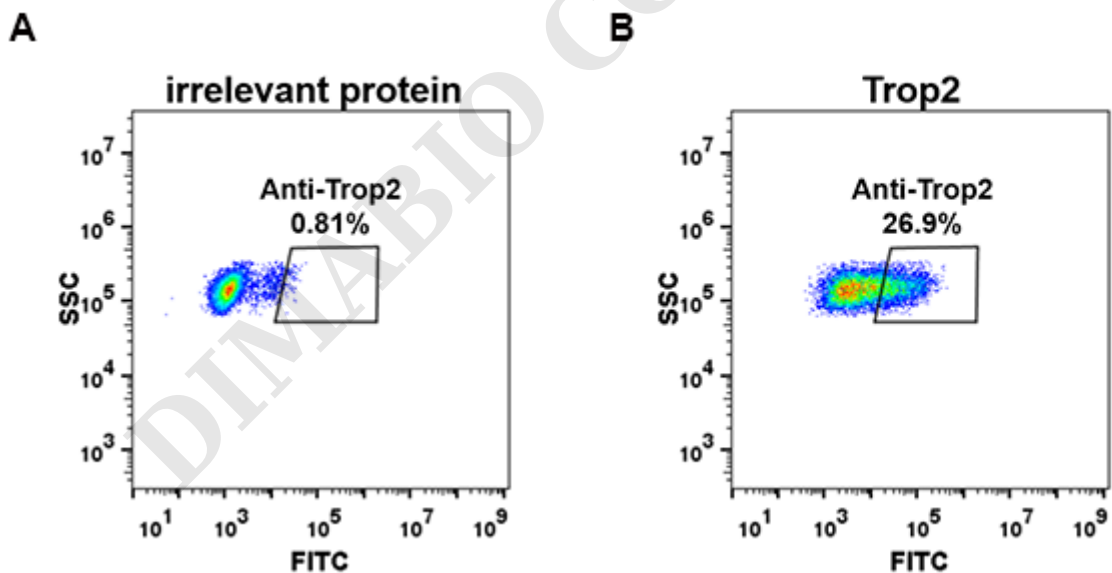
PRODUCT INFORMATION

Clone ID	DM75
Target	Trop2
Synonyms	TACSTD2; GA733-1; M1S1; TROP2
Host Species	Rabbit
Description	Anti-Trop2 antibody(DM75); Rabbit mAb
Delivery	In Stock
Uniprot ID	P09758
IgG type	Rabbit IgG
Clonality	Monoclonal
Reactivity	Human
Applications	ELISA; Flow Cyt
Recommended Dilutions	ELISA 1:5000-10000; Flow Cyt 1:100
Purification	Purified from cell culture supernatant by affinity chromatography
Formulation & Reconstitution	Lyophilized from sterile PBS, pH 7.4. Normally 5 % - 8% trehalose is added as protectants before lyophilization. Please see Certificate of Analysis for specific instructions of reconstitution.
Storage & Shipping	Store at -20°C to -80°C for 12 months in lyophilized form. After reconstitution, if not intended for use within a month, aliquot and store at -80°C (Avoid repeated freezing and thawing). Lyophilized proteins are shipped at ambient temperature.
Background	This intronless gene encodes a carcinoma-associated antigen. This antigen is a cell surface receptor that transduces calcium signals. Mutations of this gene have been associated with gelatinous drop-like corneal dystrophy.
Usage	Research use only





**Figure 1.** ELISA plate pre-coated by 2  $\mu$ g/ml (100  $\mu$ l/well) Human Trop2 protein, mFc-His tagged protein ([getskuurl sku="PME100501"]) can bind Rabbit anti-Trop2 monoclonal antibody (**clone: DM75**) in a linear range of 1-100 ng/ml.



**Figure 2.** Expi 293 cell line transfected with irrelevant protein (**A**) and human Trop2 (**B**) were surface stained with Rabbit anti-Trop2 monoclonal antibody 1 $\mu$ g/ml (**clone: DM75**) followed by Alexa 488-conjugated anti-rabbit IgG secondary antibody.

