

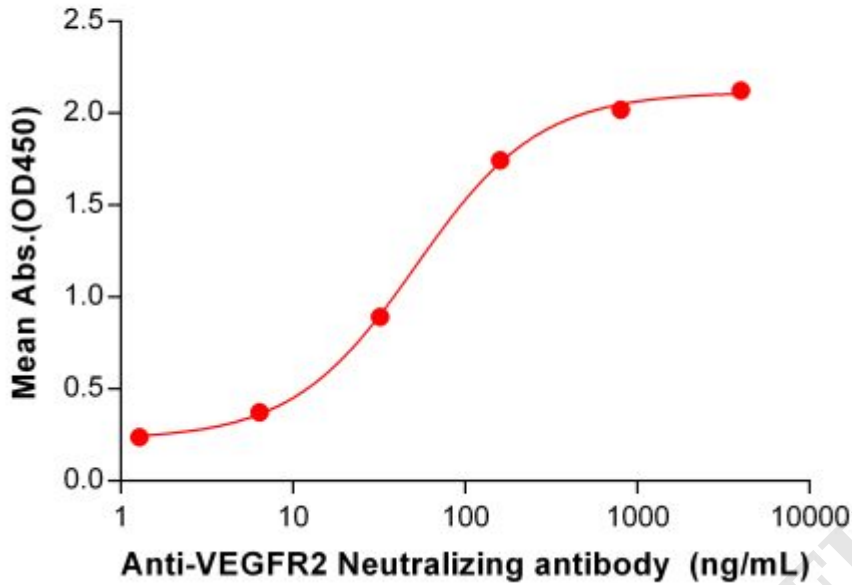
**PRODUCT INFORMATION**

<b>Common Name</b>	1121B, IMC-1121B, LY3009806
<b>Conjugate</b>	Unconjugated
<b>Synonyms</b>	CD309;FLK1;VEGFR;VEGFR2
<b>Applications</b>	ELISA; Flow Cyt
<b>Recommended Dilutions</b>	ELISA 1:5000-10000; Flow Cyt 1:100
<b>Formulation &amp; Reconstitution</b>	Lyophilized from sterile PBS, pH 7.4. Normally 5% - 8% trehalose is added as protectants before lyophilization. Please see Certificate of Analysis for specific instructions of reconstitution.
<b>Host Species</b>	Homo sapiens
<b>IgG type</b>	Human IgG1 - kappa
<b>Reactivity</b>	Human
<b>Target</b>	VEGFR2
<b>Uniprot ID</b>	P35968
<b>Description</b>	Anti-VEGFR2 (ramucirumab biosimilar)mAb
<b>Delivery</b>	In Stock
<b>Storage&amp;Shipping</b>	Store at -20°C to -80°C for 12 months in lyophilized form. After reconstitution, if not intended for use within a month, aliquot and store at -80°C (Avoid repeated freezing and thawing). Lyophilized proteins are shipped at ambient temperature.
<b>Background</b>	Research grade biosimilar. Not for use in therapeutic or diagnostic procedures for humans or animals.
<b>Usage</b>	Research use only

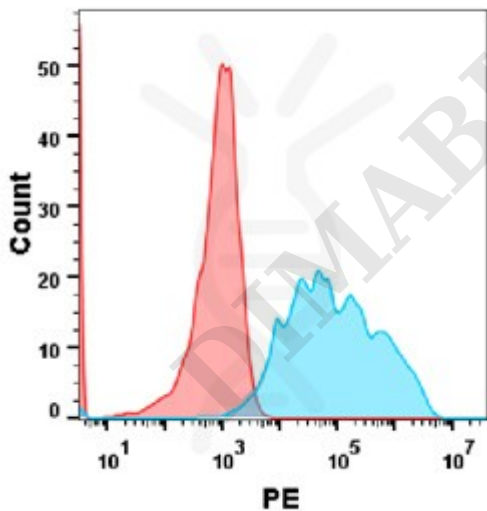


## Anti-VEGFR2 (ramucirumab biosimilar)mAb ELISA

0.5 µg of Human VEGFR2, His tagged protein per well



**Figure 1.** ELISA plate pre-coated by 5 µg/mL (100 µL/well) Human VEGFR2 protein, His Tag ([getskuurl sku="PME100104"]) can bind Anti-VEGFR2 Neutralizing antibody (BME100060) in a linear range of 6.4-800 ng/mL.



**Figure 2.** Flow cytometry analysis with Anti-VEGFR2 mAb 1 µg/ml (ramucirumab) on HEK293 cells transfected with human VEGFR2 (Blue histogram) or HEK293 transfected with irrelevant protein (Red histogram) .

