

PRODUCT INFORMATION

Target	CCL24
Synonyms	CK-beta-6;Eotaxin-2;MPIF-2
Description	Recombinant Cynomolgus CCL24 protein with C-terminal human Fc tag
Delivery	In Stock
Uniprot ID	XP_005549400
Expression Host	HEK293
Tag	C-Human Fc Tag
Molecular Characterization	CCL24(Val27-His119) hFc(Glu99-Ala330)
Molecular Weight	The protein has a predicted molecular mass of 36.6 kDa after removal of the signal peptide. The apparent molecular mass of cCCL24-hFc is approximately 35-55 kDa due to glycosylation.
Purity	The purity of the protein is greater than 95% as determined by SDS-PAGE and Coomassie blue staining.
Formulation & Reconstitution	Lyophilized from sterile PBS, pH 7.4. Normally 5% - 8% trehalose is added as protectants before lyophilization. Please see Certificate of Analysis for specific instructions of reconstitution.
Storage&Shipping	Store at -20°C to -80°C for 12 months in lyophilized form. After reconstitution, if not intended for use within a month, aliquot and store at -80°C (Avoid repeated freezing and thawing). Lyophilized proteins are shipped at ambient temperature.
Sterility	Products are supplied non-sterile. For cell culture applications, dilute in appropriate medium and sterile-filter (0.22 µm) prior to use.
Background	This gene belongs to the subfamily of small cytokine CC genes. Cytokines are a family of secreted proteins involved in immunoregulatory and inflammatory processes. The CC cytokines are proteins characterized by two adjacent cysteines. The cytokine encoded by this gene displays chemotactic activity on resting T lymphocytes, a minimal activity on neutrophils, and is negative on monocytes and activated T lymphocytes. This protein also has antimicrobial activity, displaying an antibacterial effect on <i>S. pneumoniae</i> , <i>S. aureus</i> , Non-typeable <i>H. influenzae</i> , and <i>P. aeruginosa</i> . Finally, the protein is a strong suppressor of colony formation by a multipotential hematopoietic progenitor cell line. [provided by RefSeq, Jul 2020]
Usage	Research use only
Conjugate	Unconjugated



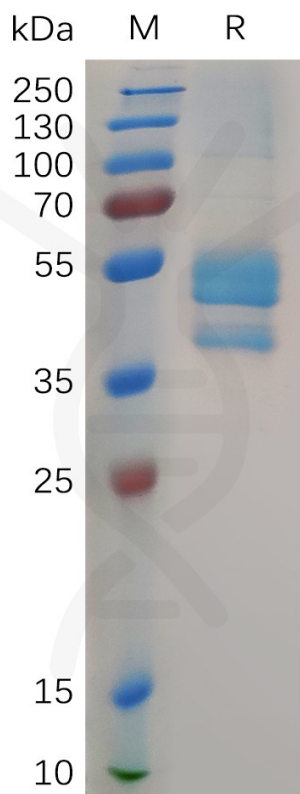


Figure 1. Cynomolgus CCL24 Protein, hFc Tag on SDS-PAGE under reducing condition.

DIMABIO CONFIDENTIAL

