

PRODUCT INFORMATION

Target	ADAM9
Synonyms	CORD9;MCMP;MDC9;Mltng
Description	Recombinant human ADAM9 Protein with C-terminal 6×His tag
Delivery	In Stock
Uniprot ID	Q13443
Expression Host	HEK293
Tag	C-6×His Tag
Molecular Characterization	ADAM9(Ala29-Asp697) 6×His Tag
Molecular Weight	The protein has a predicted molecular mass of 74.8 kDa after removal of the signal peptide.
Purity	The purity of the protein is greater than 95% as determined by SDS-PAGE and Coomassie blue staining.
Formulation & Reconstitution	Lyophilized from sterile PBS, pH 7.4. Normally 5 % - 8% trehalose is added as protectants before lyophilization. Please see Certificate of Analysis for specific instructions of reconstitution.
Storage&Shipping	Store at -20°C to -80°C for 12 months in lyophilized form. After reconstitution, if not intended for use within a month, aliquot and store at -80°C (Avoid repeated freezing and thawing). Lyophilized proteins are shipped at ambient temperature.
Sterility	Products are supplied non-sterile. For cell culture applications, dilute in appropriate medium and sterile-filter (0.22 µm) prior to use.
Background	This gene encodes a member of the ADAM (a disintegrin and metalloprotease domain) family. Members of this family are membrane-anchored proteins structurally related to snake venom disintegrins, and have been implicated in a variety of biological processes involving cell-cell and cell-matrix interactions, including fertilization, muscle development, and neurogenesis. The protein encoded by this gene interacts with SH3 domain-containing proteins, binds mitotic arrest deficient 2 beta protein, and is also involved in TPA-induced ectodomain shedding of membrane-anchored heparin-binding EGF-like growth factor. Several alternatively spliced transcript variants have been identified for this gene. [provided by RefSeq, Jul 2010]
Usage	Research use only
Conjugate	Unconjugated



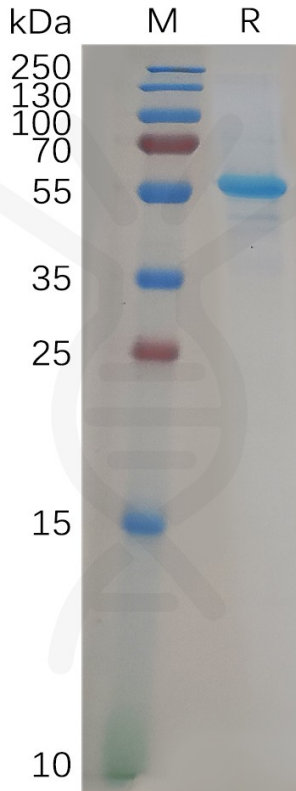


Figure 1. Human ADAM9 Protein, His Tag on SDS-PAGE under reducing (R) conditions.

Human ADAM9, His tagged protein ELISA

0.1 μg of Human ADAM9, His tagged protein per well

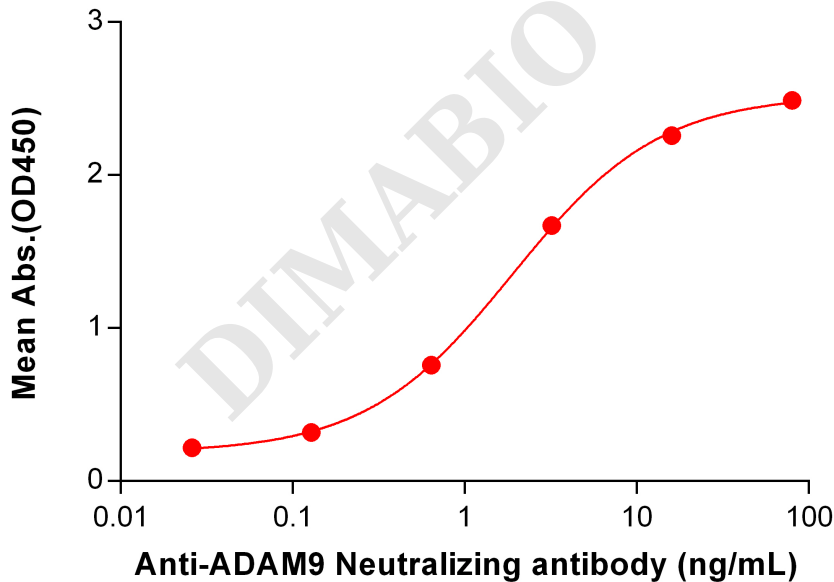


Figure 2. ELISA plate pre-coated by 1 $\mu\text{g}/\text{mL}$ (100 $\mu\text{L}/\text{well}$) Human ADAM9 protein, His Tag (PME100901) can bind Anti-ADAM9 Neutralizing antibody BME100064 in a linear range of 0.128-16 ng/mL.



Human ADAM9, His Tagged protein ELISA

0.2 μ g of Human ADAM9, His tagged protein per well

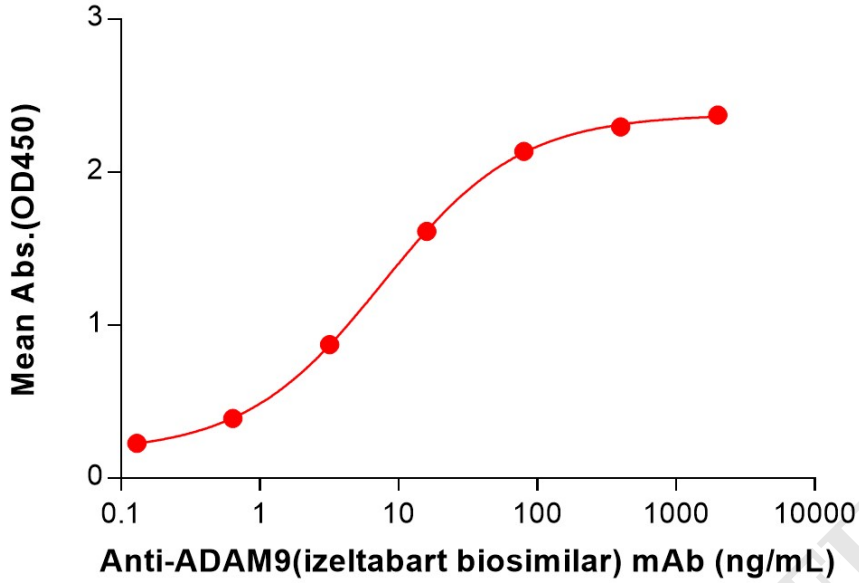


Figure 3. ELISA plate pre-coated by 2 μ g/mL (100 μ L/well) Human ADAM9 Protein, His Tag (PME100901) can bind Anti-ADAM9(izeltabart biosimilar) mAb (BME100230) in a linear range of 0.64-80 ng/mL.

