

PRODUCT INFORMATION

Target	ALB
Synonyms	HSA;PRO0883;PRO0903;PRO1341
Description	Recombinant Human ALB with C-terminal 6×His tag
Delivery	In Stock
Uniprot ID	P02768
Expression Host	HEK293
Tag	C-6×His Tag
Molecular Characterization	ALB(Asp25-Leu609) 6×His tag
Molecular Weight	The protein has a predicted molecular mass of 67.3 kDa after removal of the signal peptide. The apparent molecular mass of ALB-His is approximately 55-70 kDa due to glycosylation.
Purity	The purity of the protein is greater than 95% as determined by SDS-PAGE and Coomassie blue staining.
Formulation & Reconstitution	Lyophilized from sterile PBS, pH 7.4. Normally 5 % - 8% trehalose is added as protectants before lyophilization. Please see Certificate of Analysis for specific instructions of reconstitution.
Storage & Shipping	Store at -20°C to -80°C for 12 months in lyophilized form. After reconstitution, if not intended for use within a month, aliquot and store at -80°C (Avoid repeated freezing and thawing). Lyophilized proteins are shipped at ambient temperature.
Background	This gene encodes the most abundant protein in human blood. This protein functions in the regulation of blood plasma colloid osmotic pressure and acts as a carrier protein for a wide range of endogenous molecules including hormones, fatty acids, and metabolites, as well as exogenous drugs. Additionally, this protein exhibits an esterase-like activity with broad substrate specificity. The encoded preproprotein is proteolytically processed to generate the mature protein. A peptide derived from this protein, EPI-X4, is an endogenous inhibitor of the CXCR4 chemokine receptor. [provided by RefSeq, Jul 2016]
Usage	Research use only



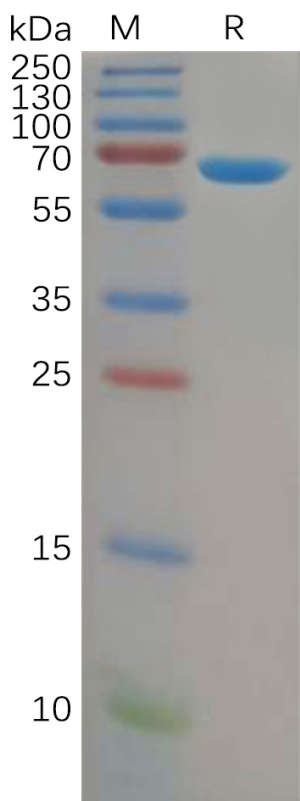


Figure 1. Human ALB Protein, His Tag on SDS-PAGE under reducing condition.

**Human ALB,His Tagged protein ELISA**  
0.2  $\mu$ g of Human ALB, His tagged protein per well

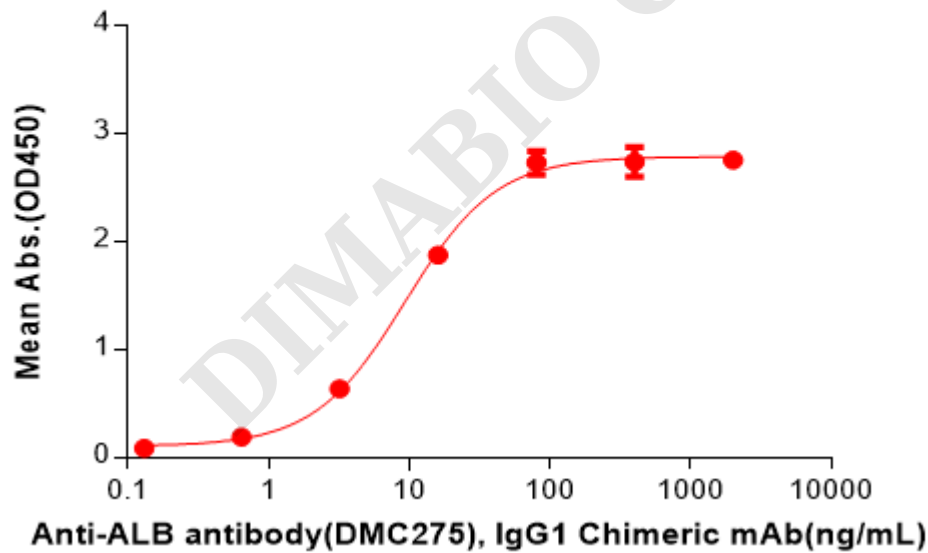


Figure 2. ELISA plate pre-coated by 2  $\mu$ g/mL (100  $\mu$ L/well) Human ALB Protein, His Tag(PME100591) can bind Anti-ALB antibody(DMC275), IgG1 Chimeric mAb in a linear range of 3.20-16 ng/mL.

