

PRODUCT INFORMATION

Target	BCMA
Synonyms	TNFRSF17;CD269;BCM;BCMA
Description	Recombinant human BCMA protein with C-terminal mouse Fc tag
Delivery	In Stock
Uniprot ID	Q02223
Expression Host	HEK293
Tag	C-Mouse Fc Tag
Molecular Characterization	BCMA(Met1-Ala54) mFc(Pro99-Lys330)
Molecular Weight	The protein has a predicted molecular mass of 32.1 kDa after removal of the signal peptide.
Purity	The purity of the protein is greater than 95% as determined by SDS-PAGE and Coomassie blue staining.
Formulation & Reconstitution	Lyophilized from sterile PBS, pH 7.4. Normally 5% - 8% trehalose is added as protectants before lyophilization. Please see Certificate of Analysis for specific instructions of reconstitution.
Storage&Shipping	Store at -20°C to -80°C for 12 months in lyophilized form. After reconstitution, if not intended for use within a month, aliquot and store at -80°C (Avoid repeated freezing and thawing). Lyophilized proteins are shipped at ambient temperature.
Sterility	Products are supplied non-sterile. For cell culture applications, dilute in appropriate medium and sterile-filter (0.22 µm) prior to use.
Background	B-cell maturation protein (BCMA or BCM), is also known as Tumor necrosis factor receptor superfamily member 17 (TNFRSF17), which is encoded by the TNFRSF17 gene. TNFRSF17 is a cell surface receptor of the TNF receptor superfamily which recognizes B-cell activating factor (BAFF). This receptor is expressed in immune organs and mature B cell lines. BCMA promotes B-cell survival and plays a role in the regulation of humoral immunity. BCMA can activate NF-kappa-B and JNK.
Usage	Research use only
Conjugate	Unconjugated



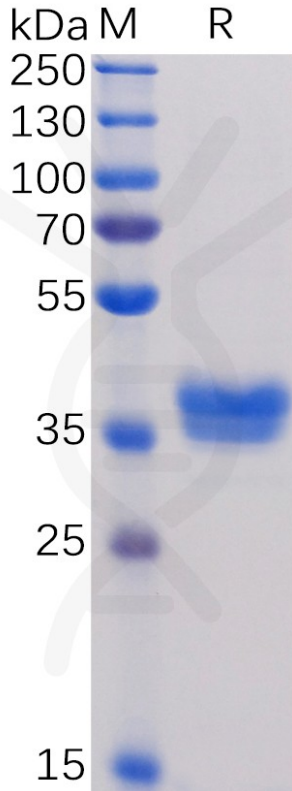


Figure 1. Human BCMA, mFc Tag on SDS-PAGE under reducing condition.

Human BCMA, mFc Tagged protein ELISA

0.2 µg of BAFF, hFc Tagged protein per well

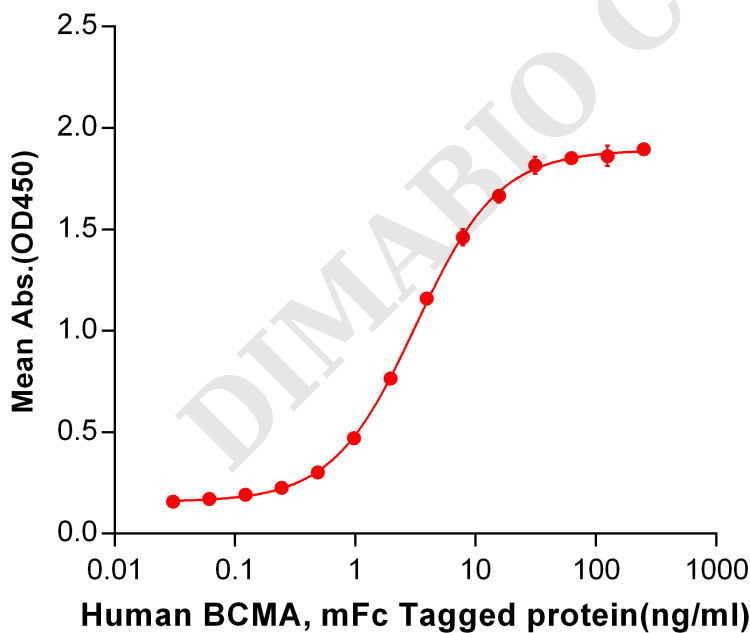


Figure 2. ELISA plate pre-coated by 2 µg/ml (100 µl/well) Human BAFF, hFc tagged protein PME100043 can bind Human BCMA, mFc tagged protein (PME100035) in a linear range of 0.03-15.625 ng/ml.



Human BCMA, mFc Tagged protein ELISA

0.2 μ g of Human BCMA, mFc tagged protein per well

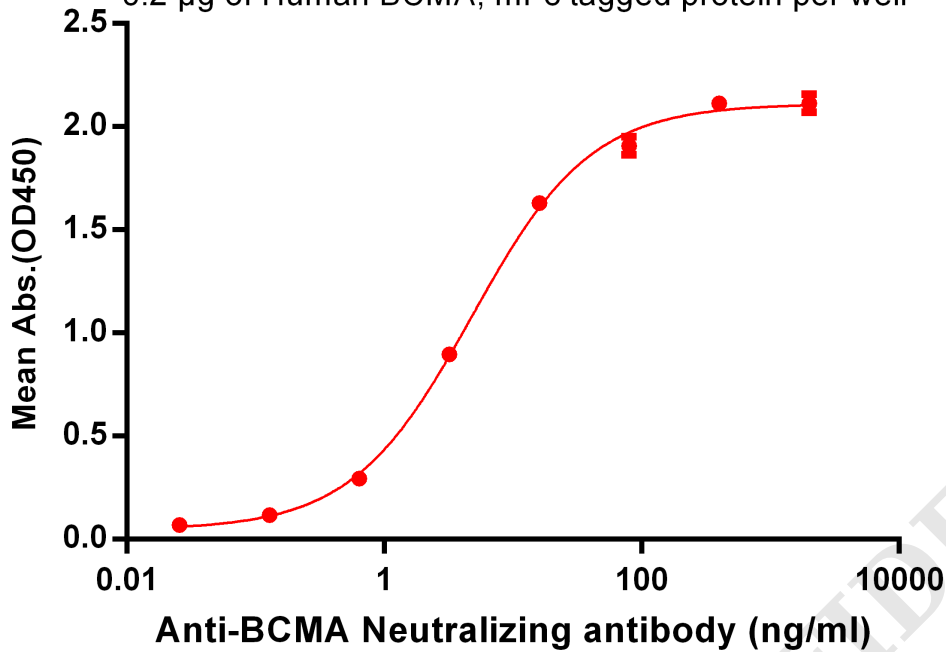


Figure 3. ELISA plate pre-coated by 2 μ g/ml (100 μ l/well) Human BCMA, mFc tagged protein (PME100035) can bind Anti-BCMA Neutralizing antibody BME100028 in a linear range of 0.64-80.0 ng/ml.

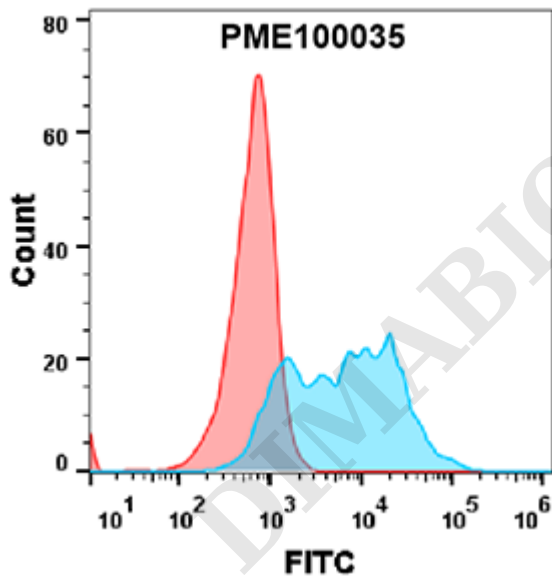


Figure 4. Flow cytometry analysis with 1 μ g/ml Human BCMA Protein, mFc tag (PME100035) on HEK293 cells transfected with human BAFF (Blue histogram) or HEK293 transfected with irrelevant protein (Red histogram).



Human BCMA, mFc Tagged Protein ELISA

0.2 μ g of Human BCMA , mFc tagged protein per well

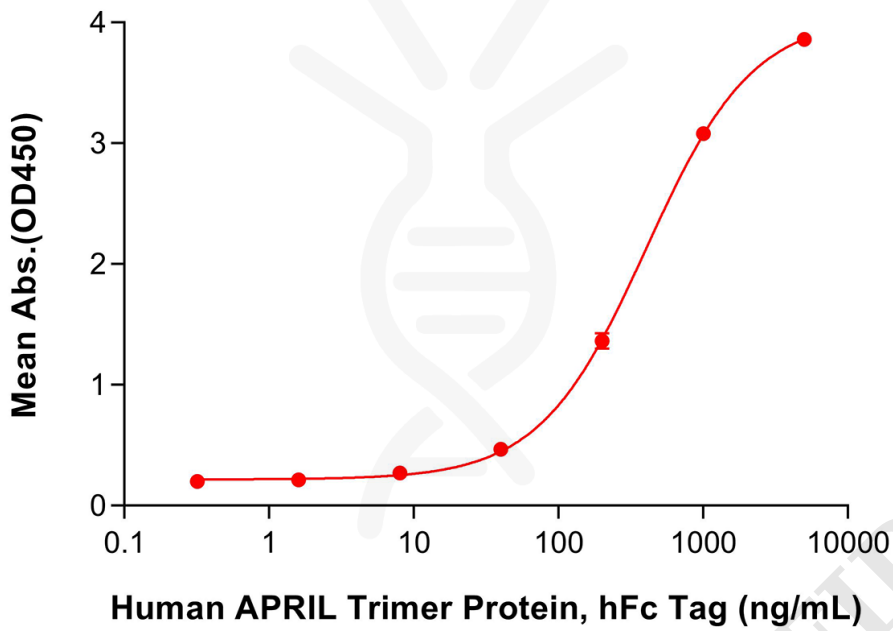


Figure 5. ELISA plate pre-coated by 2 μ g/mL (100 μ L/well) Human BCMA Protein, mFc Tag (PME100035) can bind Human APRIL Trimer Protein, hFc Tag (PME101972) in a linear range of 0.2–1 μ g/mL.

