

**PRODUCT INFORMATION**

<b>Target</b>	BTLA
<b>Synonyms</b>	BTLA;CD272
<b>Description</b>	Recombinant human BTLA protein with C-terminal mouse Fc and 6×His tag
<b>Delivery</b>	In Stock
<b>Uniprot ID</b>	Q7Z6A9
<b>Expression Host</b>	HEK293
<b>Tag</b>	C-Mouse Fc and 6×His Tag
<b>Molecular Characterization</b>	BTLA(Lys31-Ser150) mFc(Pro99-Lys330) 6×His tag
<b>Molecular Weight</b>	The protein has a predicted molecular mass of 41.3 kDa after removal of the signal peptide.
<b>Purity</b>	The purity of the protein is greater than 95% as determined by SDS-PAGE and Coomassie blue staining.
<b>Formulation &amp; Reconstitution</b>	Lyophilized from sterile PBS, pH 7.4. Normally 5 % - 8% trehalose is added as protectants before lyophilization. Please see Certificate of Analysis for specific instructions of reconstitution.
<b>Storage&amp;Shipping</b>	Store at -20°C to -80°C for 12 months in lyophilized form. After reconstitution, if not intended for use within a month, aliquot and store at -80°C (Avoid repeated freezing and thawing). Lyophilized proteins are shipped at ambient temperature.
<b>Sterility</b>	Products are supplied non-sterile. For cell culture applications, dilute in appropriate medium and sterile-filter (0.22 µm) prior to use.
<b>Background</b>	This gene encodes a member of the immunoglobulin superfamily. The encoded protein contains a single immunoglobulin (Ig) domain and is a receptor that relays inhibitory signals to suppress the immune response. Alternative splicing results in multiple transcript variants. Polymorphisms in this gene have been associated with an increased risk of rheumatoid arthritis.
<b>Usage</b>	Research use only
<b>Conjugate</b>	Unconjugated



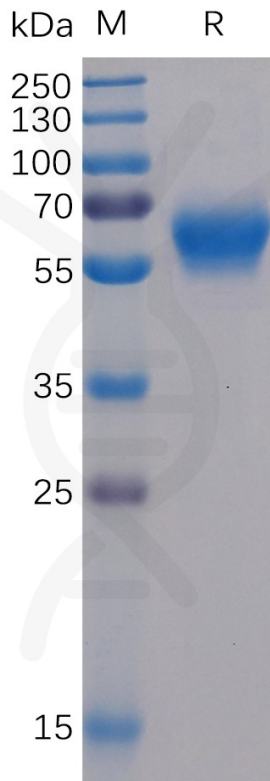


Figure 1. Human BTLA Protein, mFc-His Tag on SDS-PAGE under reducing condition.

### Human BTLA, mFc-His Tagged protein ELISA

0.2  $\mu$ g of HVEM, His Tagged protein per well

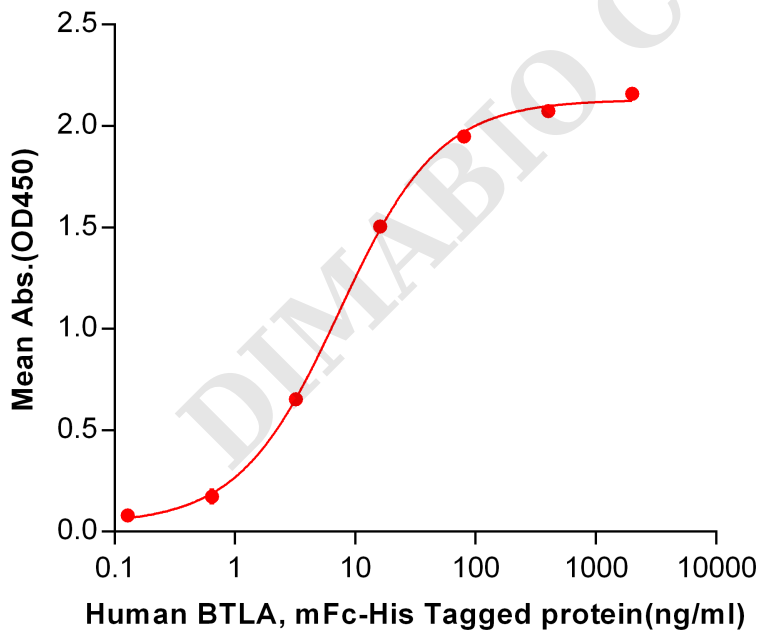


Figure 2. ELISA plate pre-coated by 2  $\mu$ g/ml (100  $\mu$ l/well) Human HVEM, His tagged protein PME100273 can bind Human BTLA, mFc-His tagged protein (PME100048) in a linear range of 0.64-80 ng/ml.



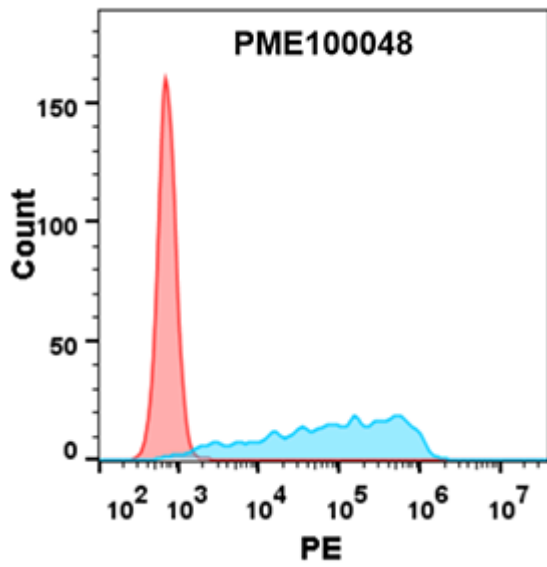


Figure 3. Flow cytometry analysis with 1µg/ml Human BTLA Protein, mFc-His tag (PME100048) on HEK293 cells transfected with human HVEM (Blue histogram) or HEK293 transfected with irrelevant protein (Red histogram).

DIMABIO CONFIDENTIAL

