

PRODUCT INFORMATION

Target	CCR6
Synonyms	CC-CKR-6;CKR-L3;DRY6;GPRCY4;CD196
Description	Recombinant human CCR6 protein with C-terminal mouse Fc tag
Delivery	In Stock
Uniprot ID	P51684
Expression Host	HEK293
Tag	C-Mouse Fc Tag
Molecular Characterization	CCR6(Met1-Leu47) mFc(Pro99-Lys330)
Molecular Weight	The protein has a predicted molecular mass of 31.7 kDa after removal of the signal peptide. The apparent molecular mass of CCR6-mFc is approximately 35-55 kDa due to glycosylation.
Purity	The purity of the protein is greater than 95% as determined by SDS-PAGE and Coomassie blue staining.
Formulation & Reconstitution	Lyophilized from sterile PBS, pH 7.4. Normally 5% - 8% trehalose is added as protectants before lyophilization. Please see Certificate of Analysis for specific instructions of reconstitution.
Storage&Shipping	Store at -20°C to -80°C for 12 months in lyophilized form. After reconstitution, if not intended for use within a month, aliquot and store at -80°C (Avoid repeated freezing and thawing). Lyophilized proteins are shipped at ambient temperature.
Sterility	Products are supplied non-sterile. For cell culture applications, dilute in appropriate medium and sterile-filter (0.22 µm) prior to use.
Background	This gene encodes a member of the beta chemokine receptor family, which is predicted to be a seven transmembrane protein similar to G protein-coupled receptors. The gene is preferentially expressed by immature dendritic cells and memory T cells. The ligand of this receptor is macrophage inflammatory protein 3 alpha (MIP-3 alpha). This receptor has been shown to be important for B-lineage maturation and antigen-driven B-cell differentiation, and it may regulate the migration and recruitment of dendritic and T cells during inflammatory and immunological responses. Alternatively spliced transcript variants that encode the same protein have been described for this gene. [provided by RefSeq, Jul 2008]
Usage	Research use only
Conjugate	Unconjugated



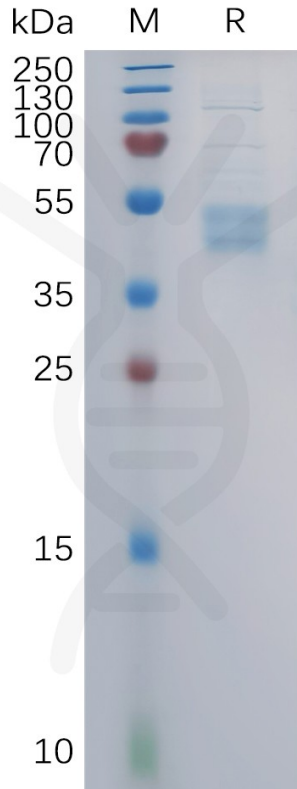
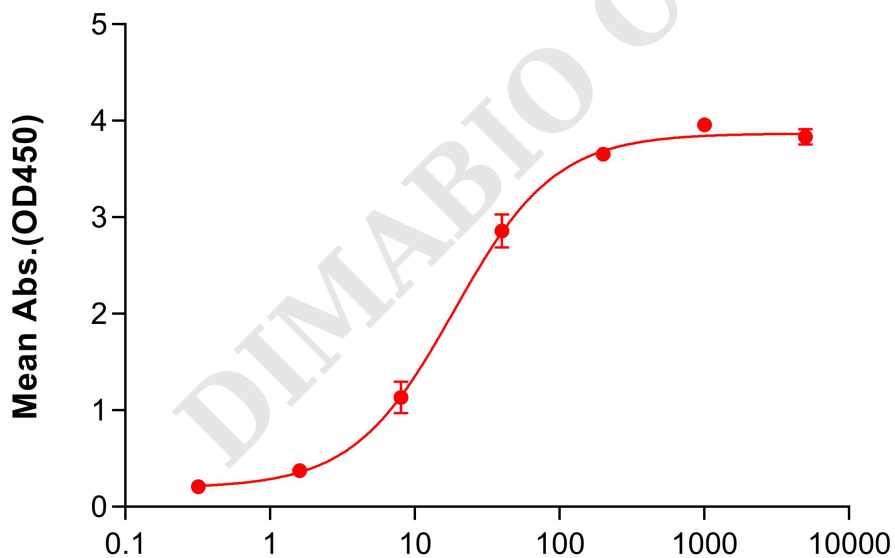


Figure 1. Human CCR6 Protein, mFc Tag on SDS-PAGE under reducing condition.

Human CCR6 Protein, mFc Tag ELISA

0.2 μ g of Human CCR6, mFc tagged protein per well



Anti-CCR6 antibody(DMC477); IgG1 Chimeric mAb (ng/mL)

Figure 2. ELISA plate pre-coated by 2 μ g/mL (100 μ L/well) Human CCR6 Protein, mFc Tag (PME101105) can bind Anti-CCR6 antibody(DMC477); IgG1 Chimeric mAb (DMC100477) in a linear range of 8-40 ng/mL.

