

PRODUCT INFORMATION

Target	CCR9
Synonyms	CC-CKR-9;CDw199;GPR-9-6;GPR28
Description	Recombinant Human CCR9 with C-terminal human Fc tag
Delivery	In Stock
Uniprot ID	P51686
Expression Host	HEK293
Tag	C-Human Fc Tag
Molecular Characterization	CCR9(Met1-Ser48) hFc(Glu99-Ala330)
Molecular Weight	The protein has a predicted molecular mass of 31.6 kDa after removal of the signal peptide. The apparent molecular mass of CCR9-hFc is approximately 35-55 kDa due to glycosylation.
Purity	The purity of the protein is greater than 95% as determined by SDS-PAGE and Coomassie blue staining.
Formulation & Reconstitution	Lyophilized from sterile PBS, pH 7.4. Normally 5 % - 8% trehalose is added as protectants before lyophilization. Please see Certificate of Analysis for specific instructions of reconstitution.
Storage & Shipping	Store at -20°C to -80°C for 12 months in lyophilized form. After reconstitution, if not intended for use within a month, aliquot and store at -80°C (Avoid repeated freezing and thawing). Lyophilized proteins are shipped at ambient temperature.
Background	The protein encoded by this gene is a G protein-coupled receptor with seven transmembrane domains that belongs to the beta chemokine receptor family. Chemokines and their receptors are key regulators of thymocyte migration and maturation in normal and inflammation conditions. This gene is differentially expressed in T lymphocytes of the small intestine and colon, and its interaction with chemokine 25 contributes to intestinal intra-epithelial lymphocyte homing to the small intestine. This suggests a role for this gene in directing immune responses to different segments of the gastrointestinal tract. This gene and its exclusive ligand, chemokine 25, are overexpressed in a variety of malignant tumors and are closely associated with tumor proliferation, apoptosis, invasion, migration and drug resistance. This gene maps to the chemokine receptor gene cluster. Multiple transcript variants encoding different isoforms have been found for this gene. [provided by RefSeq, Aug 2020]
Usage	Research use only



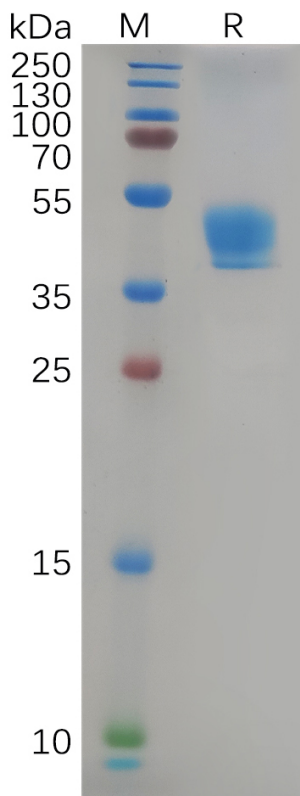


Figure 1. Human CCR9 Protein, hFc Tag on SDS-PAGE under reducing condition.

