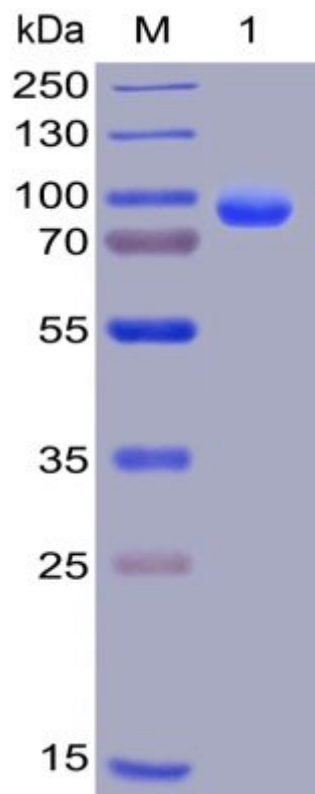


PRODUCT INFORMATION

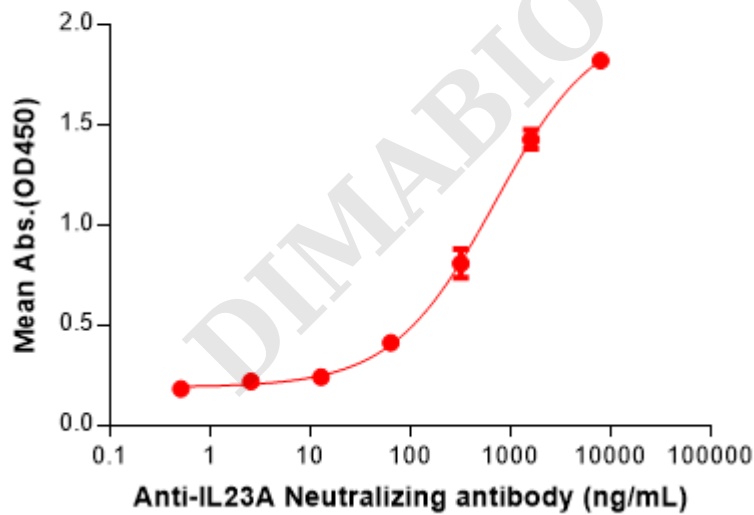
Target	CD138
Synonyms	SDC1;Syndecan-1;CD138;SYND1;SDC
Description	Recombinant human CD138 protein with C-terminal human Fc and 6×His tag
Delivery	In Stock
Uniprot ID	P18827
Expression Host	HEK293
Tag	C-Human Fc and 6×His Tag
Molecular Characterization	CD138(Gln23-Gly254) hFc(Glu99-Ala330) 6×His tag
Molecular Weight	The protein has a predicted molecular mass of 50.8 kDa after removal of the signal peptide. The apparent molecular mass of CD138-hFc-His is approximately 70-100 kDa due to glycosylation.
Purity	The purity of the protein is greater than 95% as determined by SDS-PAGE and Coomassie blue staining.
Formulation & Reconstitution	Lyophilized from sterile PBS, pH 7.4. Normally 5 % - 8% trehalose is added as protectants before lyophilization. Please see Certificate of Analysis for specific instructions of reconstitution.
Storage & Shipping	Store at -20°C to -80°C for 12 months in lyophilized form. After reconstitution, if not intended for use within a month, aliquot and store at -80°C (Avoid repeated freezing and thawing). Lyophilized proteins are shipped at ambient temperature.
Background	Syndecan-1 (SYND1 or SDC1) is also known as CD antigen CD138, is a transmembrane (type I) heparan sulfate proteoglycan and is a member of the syndecan proteoglycan family. The syndecans mediate cell binding, cell signaling, and cytoskeletal organization and syndecan receptors are required for internalization of the HIV-1 tat protein. The syndecan-1 / SDC1 protein functions as an integral membrane protein and participates in cell proliferation, cell migration and cell-matrix interactions via its receptor for extracellular matrix proteins. It is a useful marker for plasma cells, but only if the cells tested are already known to be derived from blood.
Usage	Research use only





**Figure 1.** Human CD138, hFc-His Tag on SDS-PAGE under reducing condition.

**Anti-IL23A(guselkumab biosimilar) mAb ELISA**  
0.2  $\mu$ g of Human IL23A, hFc tagged protein per well



**Figure 2.** ELISA plate pre-coated by 2  $\mu$ g/ml (100  $\mu$ l/well) Human CD138, hFc-His tagged protein (PME100006) can bind Anti-CD138 antibody in a linear range of 1.6-200 ng/ml.

