

**PRODUCT INFORMATION**

<b>Target</b>	CD155
<b>Synonyms</b>	PVR;FLJ25946;PVS;CD155;TAGE4;HVED;NECL5
<b>Description</b>	Recombinant human CD155 protein with C-terminal human Fc tag
<b>Delivery</b>	In Stock
<b>Uniprot ID</b>	P15151
<b>Expression Host</b>	HEK293
<b>Tag</b>	C-Human Fc Tag
<b>Molecular Characterization</b>	CD155(Trp21-Asn343) hFc(Glu99-Ala330)
<b>Molecular Weight</b>	The protein has a predicted molecular mass of 61.2 kDa after removal of the signal peptide. The apparent molecular mass of CD155-hFc is approximately 70-100 kDa due to glycosylation.
<b>Purity</b>	The purity of the protein is greater than 95% as determined by SDS-PAGE and Coomassie blue staining.
<b>Formulation &amp; Reconstitution</b>	Lyophilized from sterile PBS, pH 7.4. Normally 5% - 8% trehalose is added as protectants before lyophilization. Please see Certificate of Analysis for specific instructions of reconstitution.
<b>Storage&amp;Shipping</b>	Store at -20°C to -80°C for 12 months in lyophilized form. After reconstitution, if not intended for use within a month, aliquot and store at -80°C (Avoid repeated freezing and thawing). Lyophilized proteins are shipped at ambient temperature.
<b>Sterility</b>	Products are supplied non-sterile. For cell culture applications, dilute in appropriate medium and sterile-filter (0.22 µm) prior to use.
<b>Background</b>	The protein encoded by this gene is a transmembrane glycoprotein belonging to the immunoglobulin superfamily. The external domain mediates cell attachment to the extracellular matrix molecule vitronectin, while its intracellular domain interacts with the dynein light chain Tctex-1/DYNLT1. The gene is specific to the primate lineage, and serves as a cellular receptor for poliovirus in the first step of poliovirus replication. Multiple transcript variants encoding different isoforms have been found for this gene.
<b>Usage</b>	Research use only
<b>Conjugate</b>	Unconjugated



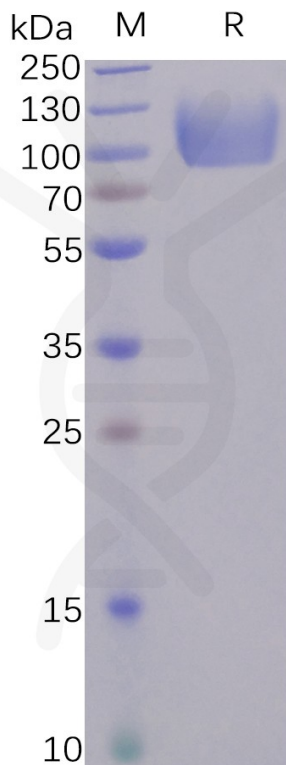


Figure 1. Human CD155 Protein, hFc Tag on SDS-PAGE under reducing condition.

### Human CD155, hFc Tagged protein ELISA

0.2 µg of Human DNAM-1, mFc-His Tagged protein per well

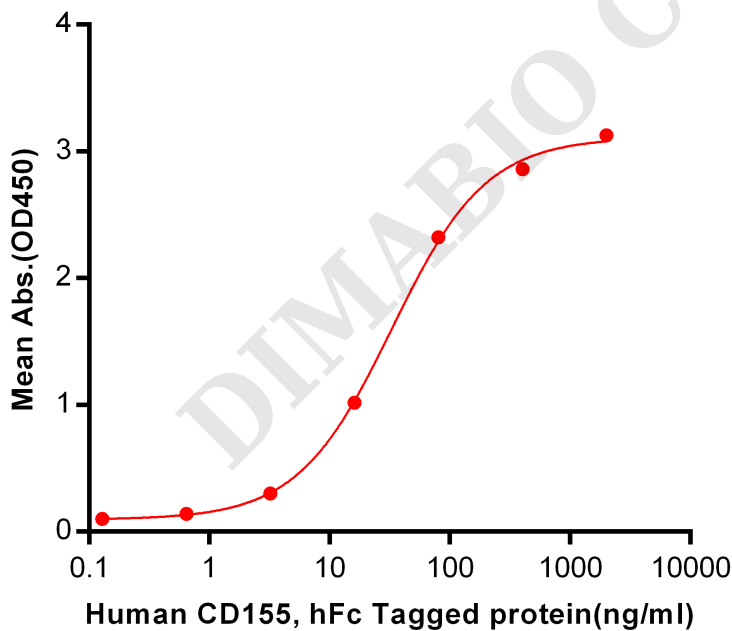


Figure 2. ELISA plate pre-coated by 2 µg/ml (100 µl/well) Human DNAM-1, mFc-His tagged protein PME100050 can bind Human CD155, hFc Tagged protein [PME100485] in a linear range of 0.128-32.88 ng/ml.



### Human CD155, hFc Tagged protein ELISA

0.2 µg of CD155, hFc Tagged protein per well

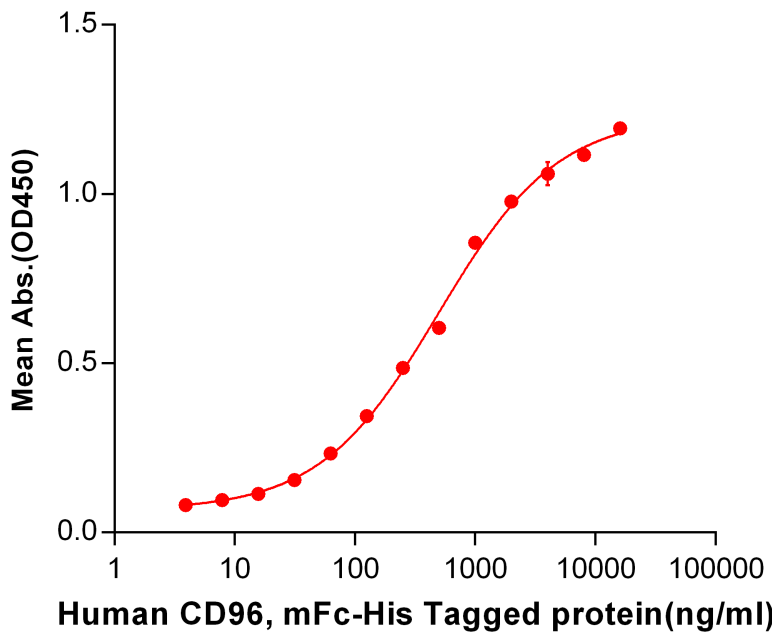


Figure 3. ELISA plate pre-coated by 2 µg/ml (100 µl/well) Human CD96, mFc-His tagged protein PME100028 can bind Human CD155, hFc tagged protein (PME100485) in a linear range of 62.5-4000 ng/ml.

DIMABIO CONFIDENTIAL

