

PRODUCT INFORMATION

Target	CD155
Synonyms	PVR;FLJ25946;PVS;CD155;TAGE4;HVED;NECL5
Description	Recombinant human CD155 protein with C-terminal mouse Fc and 6×His tag
Delivery	In Stock
Uniprot ID	P15151
Expression Host	HEK293
Tag	C-Mouse Fc and 6×His Tag
Molecular Characterization	CD155(Trp21-Asn343) mFc(Pro99-Lys330) 6×His tag
Molecular Weight	The protein has a predicted molecular mass of 62.2 kDa after removal of the signal peptide. The apparent molecular mass of CD155-mFc-His is approximately 95-130 kDa due to glycosylation.
Purity	The purity of the protein is greater than 95% as determined by SDS-PAGE and Coomassie blue staining.
Formulation & Reconstitution	Lyophilized from sterile PBS, pH 7.4. Normally 5% - 8% trehalose is added as protectants before lyophilization. Please see Certificate of Analysis for specific instructions of reconstitution.
Storage&Shipping	Store at -20°C to -80°C for 12 months in lyophilized form. After reconstitution, if not intended for use within a month, aliquot and store at -80°C (Avoid repeated freezing and thawing). Lyophilized proteins are shipped at ambient temperature.
Background	The protein encoded by this gene is a transmembrane glycoprotein belonging to the immunoglobulin superfamily. The external domain mediates cell attachment to the extracellular matrix molecule vitronectin, while its intracellular domain interacts with the dynein light chain Tctex-1/DYNLT1. The gene is specific to the primate lineage, and serves as a cellular receptor for poliovirus in the first step of poliovirus replication. Multiple transcript variants encoding different isoforms have been found for this gene.
Usage	Research use only
Conjugate	Unconjugated



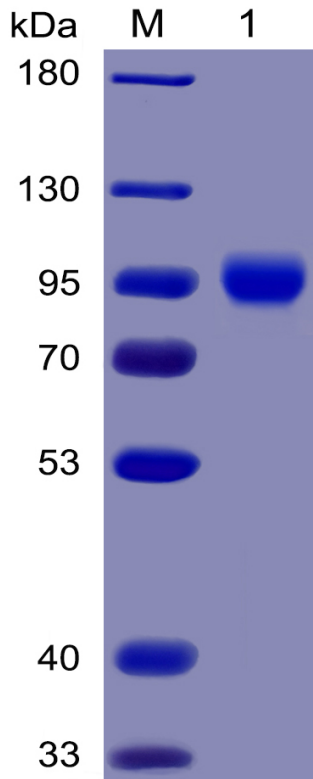


Figure 1. Human CD155 Protein, mFc-His Tag on SDS-PAGE under reducing condition.

Human CD155, mFc-His Tagged protein ELISA

0.2 µg of TIGIT, hFc Tagged protein per well

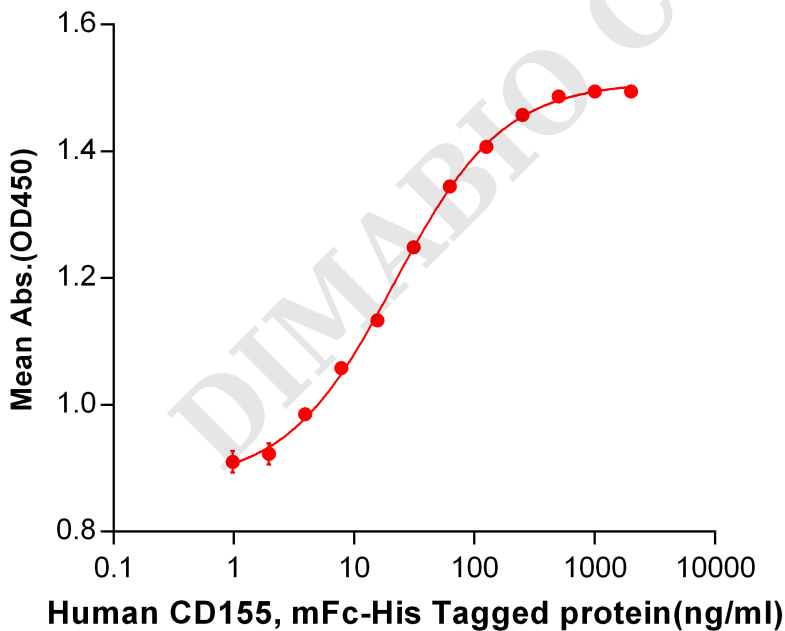


Figure 2. ELISA plate pre-coated by 2 µg/ml (100 µl/well) Human CD155, mFc-His tagged protein (PME100027) can bind Human TIGIT, hFc tagged protein PME100107 in a linear range of 1.95-125 ng/ml.



Human CD155, mFc-His tagged protein ELISA

0.1 μg of Human CD155, mFc-His tagged protein per well

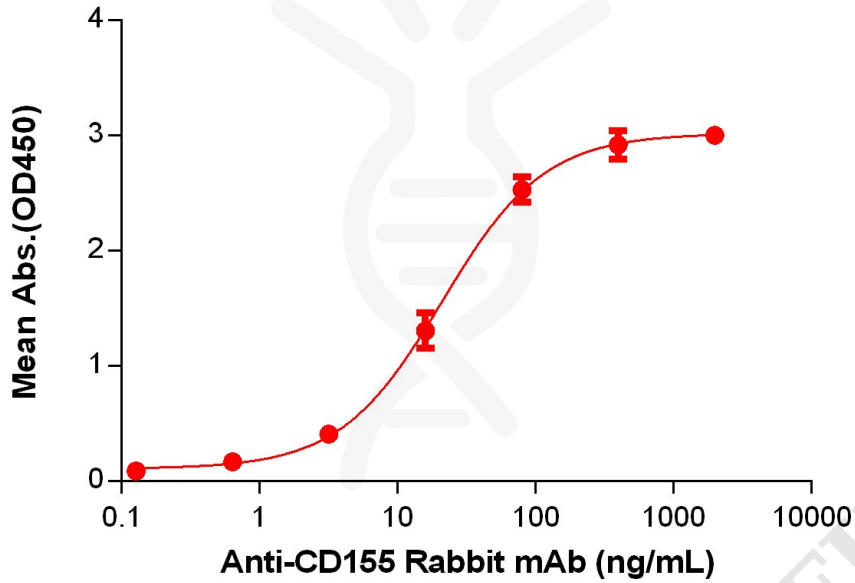


Figure 3. ELISA plate pre-coated by 1 $\mu\text{g}/\text{mL}$ (100 $\mu\text{L}/\text{well}$) Human CD155 Protein, mFc-His Tag(PME100027) can bind Anti-CD155 Rabbit mAb in a linear range of 3.2-80 ng/mL.

