

PRODUCT INFORMATION

Target	CD171
Synonyms	CAML1;CD171;HSAS;HSAS1;MASA;MIC5;N-CAM-L1;N-CAML1;NCAM-L1;S10;SPG1
Description	Recombinant Human CD171 Protein with C-terminal 6×His tag
Delivery	In Stock
Uniprot ID	P32004
Expression Host	HEK293
Tag	C-6×His Tag
Molecular Characterization	CD171(Ile20-Glu1120) 6×His tag
Molecular Weight	The protein has a predicted molecular mass of 124.0 kDa after removal of the signal peptide. The apparent molecular mass of CD171-His is approximately 130-250 kDa due to glycosylation.
Purity	The purity of the protein is greater than 95% as determined by SDS-PAGE and Coomassie blue staining.
Formulation & Reconstitution	Lyophilized from sterile PBS, pH 7.4. Normally 5% - 8% trehalose is added as protectants before lyophilization. Please see Certificate of Analysis for specific instructions of reconstitution.
Storage&Shipping	Store at -20°C to -80°C for 12 months in lyophilized form. After reconstitution, if not intended for use within a month, aliquot and store at -80°C (Avoid repeated freezing and thawing). Lyophilized proteins are shipped at ambient temperature.
Sterility	Products are supplied non-sterile. For cell culture applications, dilute in appropriate medium and sterile-filter (0.22 µm) prior to use.
Background	The protein encoded by this gene is an axonal glycoprotein belonging to the immunoglobulin supergene family. The ectodomain, consisting of several immunoglobulin-like domains and fibronectin-like repeats (type III), is linked via a single transmembrane sequence to a conserved cytoplasmic domain. This cell adhesion molecule plays an important role in nervous system development, including neuronal migration and differentiation. Mutations in the gene cause X-linked neurological syndromes known as CRASH (corpus callosum hypoplasia, retardation, aphasia, spastic paraplegia and hydrocephalus). Alternative splicing of this gene results in multiple transcript variants, some of which include an alternate exon that is considered to be specific to neurons.
Usage	Research use only
Conjugate	Unconjugated



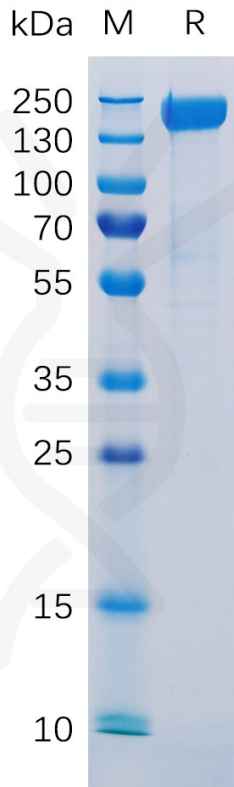


Figure 1. Human CD171 Protein, His Tag on SDS-PAGE under reducing condition.

Human CD171, His tagged protein ELISA

0.1 μg of Human CD171, His tagged protein per well

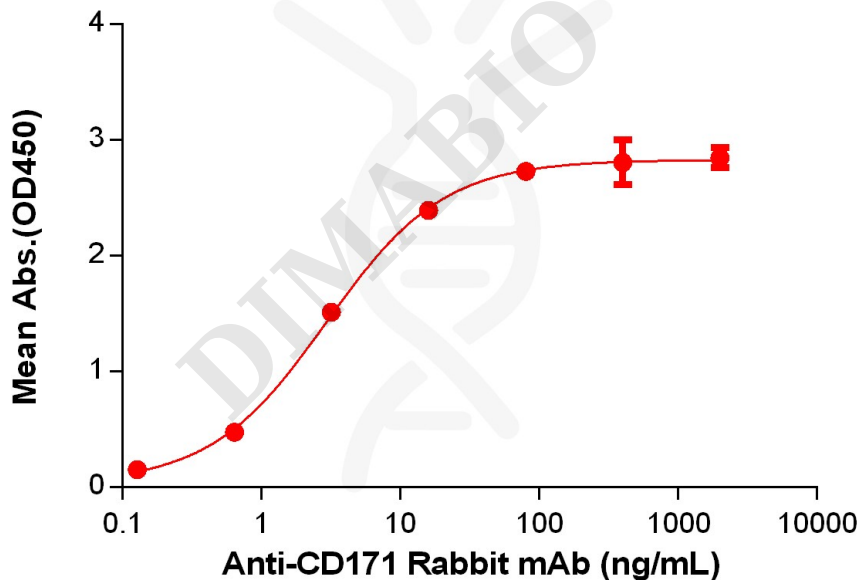


Figure 2. ELISA plate pre-coated by 1 $\mu\text{g}/\text{mL}$ (100 $\mu\text{L}/\text{well}$) Human CD171 Protein, His Tag(PME100173) can bind Anti-CD171 Rabbit mAb in a linear range of 0.64-16 ng/mL.

