

**PRODUCT INFORMATION**

|   |   |
|---|---|
| <b>Target</b>                           | CD26  |
| <b>Synonyms</b>                         | ADABP;ADCP2;CD26;DPPIV;TP103  |
| <b>Description</b>                      | Recombinant Human CD26 with C-terminal 6×His tag  |
| <b>Delivery</b>                         | In Stock  |
| <b>Uniprot ID</b>                       | P27487  |
| <b>Expression Host</b>                  | HEK293  |
| <b>Tag</b>                              | C-6×His Tag   |
| <b>Molecular Characterization</b>       | CD26(Asn29-Pro766) 6×His tag  |
| <b>Molecular Weight</b>                 | The protein has a predicted molecular mass of 111.5 kDa after removal of the signal peptide. The apparent molecular mass of CD26-His is approximately 100-130 kDa due to glycosylation.   |
| <b>Purity</b>                           | The purity of the protein is greater than 95% as determined by SDS-PAGE and Coomassie blue staining.  |
| <b>Formulation &amp; Reconstitution</b> | Lyophilized from sterile PBS, pH 7.4. Normally 5 % - 8% trehalose is added as protectants before lyophilization. Please see Certificate of Analysis for specific instructions of reconstitution.  |
| <b>Storage&amp;Shipping</b>             | Store at -20°C to -80°C for 12 months in lyophilized form. After reconstitution, if not intended for use within a month, aliquot and store at -80°C (Avoid repeated freezing and thawing). Lyophilized proteins are shipped at ambient temperature.   |
| <b>Sterility</b>                        | Products are supplied non-sterile. For cell culture applications, dilute in appropriate medium and sterile-filter (0.22 µm) prior to use.   |
| <b>Background</b>                       | The DPP4 gene encodes dipeptidyl peptidase 4, which is identical to adenosine deaminase complexing protein-2, and to the T-cell activation antigen CD26. It is an intrinsic type II transmembrane glycoprotein and a serine exopeptidase that cleaves X-proline dipeptides from the N-terminus of polypeptides. Dipeptidyl peptidase 4 is highly involved in glucose and insulin metabolism, as well as in immune regulation. This protein was shown to be a functional receptor for Middle East respiratory syndrome coronavirus (MERS-CoV), and protein modeling suggests that it may play a similar role with SARS-CoV-2, the virus responsible for COVID-19. [provided by RefSeq, Apr 2020] |
| <b>Usage</b>                            | Research use only   |
| <b>Conjugate</b>                        | Unconjugated  |



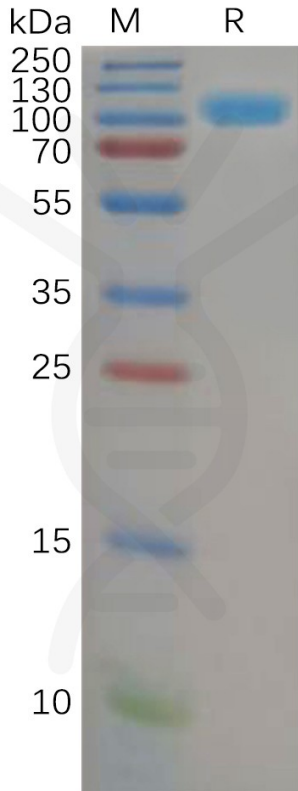


Figure 1. Human CD26 Protein, His Tag on SDS-PAGE under reducing condition.

### Human CD26 (29-766), His Tagged protein ELISA

0.2 µg of Human CD26 (29-766), His tagged protein per well

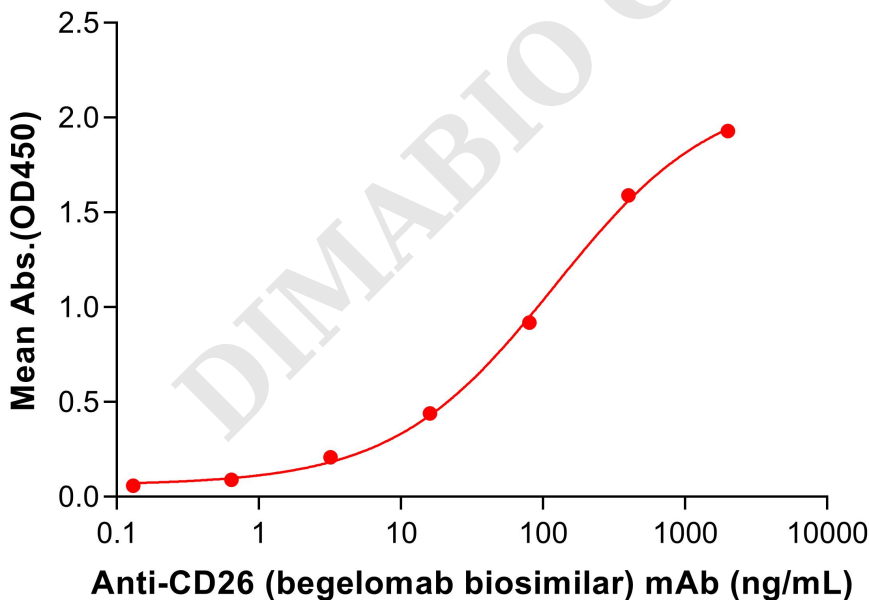


Figure 2. ELISA plate pre-coated by 2 µg/mL (100 µL/well) Human CD26 (29-766) Protein, His Tag (PME100590) can bind Anti-CD26 (begelomab biosimilar) mAb (BME100154) in a linear range of 16-400 ng/mL.

