

PRODUCT INFORMATION

Target	CD28
Synonyms	CD28;Tp44
Description	Recombinant human CD28 protein with C-terminal mouse Fc and 6×His tag
Delivery	In Stock
Uniprot ID	P10747
Expression Host	HEK293
Tag	C-Mouse Fc and 6×His Tag
Molecular Characterization	CD28(Asn19-Pro152) mFc(Pro99-Lys330) 6×His
Molecular Weight	The protein has a predicted molecular mass of 68-72 kDa after removal of the signal peptide.
Purity	The purity of the protein is greater than 95% as determined by SDS-PAGE and Coomassie blue staining.
Formulation & Reconstitution	Lyophilized from sterile PBS, pH 7.4. Normally 5 % - 8% trehalose is added as protectants before lyophilization. Please see Certificate of Analysis for specific instructions of reconstitution.
Storage&Shipping	Store at -20°C to -80°C for 12 months in lyophilized form. After reconstitution, if not intended for use within a month, aliquot and store at -80°C (Avoid repeated freezing and thawing). Lyophilized proteins are shipped at ambient temperature.
Sterility	Products are supplied non-sterile. For cell culture applications, dilute in appropriate medium and sterile-filter (0.22 µm) prior to use.
Background	The protein encoded by this gene is essential for T-cell proliferation and survival, cytokine production, and T-helper type-2 development. Several alternatively spliced transcript variants encoding different isoforms have been found for this gene.
Usage	Research use only
Conjugate	Unconjugated



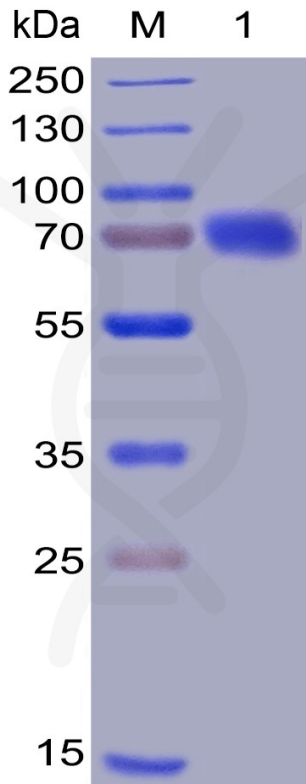


Figure 1. Human CD28 Protein, mFc-His Tag on SDS-PAGE under reducing condition.

Human CD28, mFc-His Tagged protein ELISA

0.2 μ g of B7-1, hFc Tagged protein per well

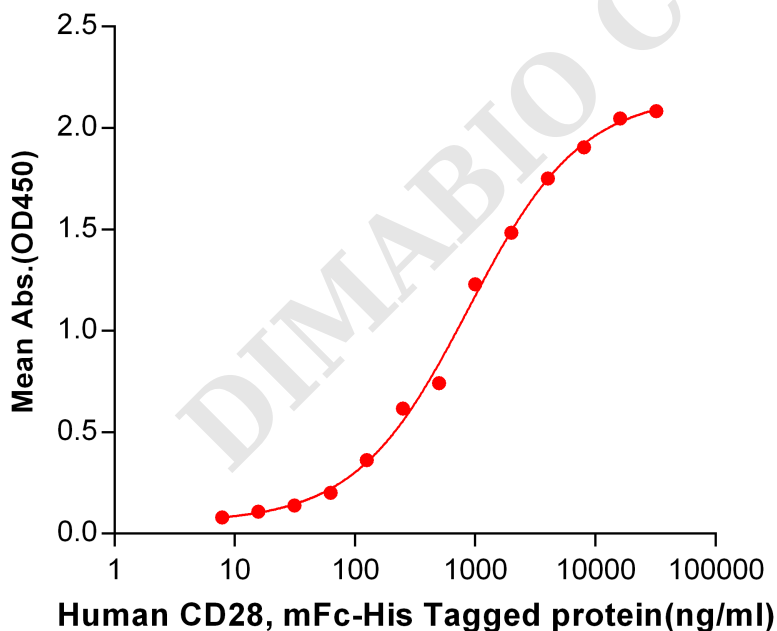


Figure 2. ELISA plate pre-coated by 2 μ g/ml (100 μ l/well) Human B7-1, hFc tagged protein PME100473 can bind Human CD28, mFc-His tagged protein (PME100014) in a linear range of 125-4000 ng/ml.



Human CD28, mFc-His Tagged protein ELISA

0.2 µg of B7-2, hFc Tagged protein per well

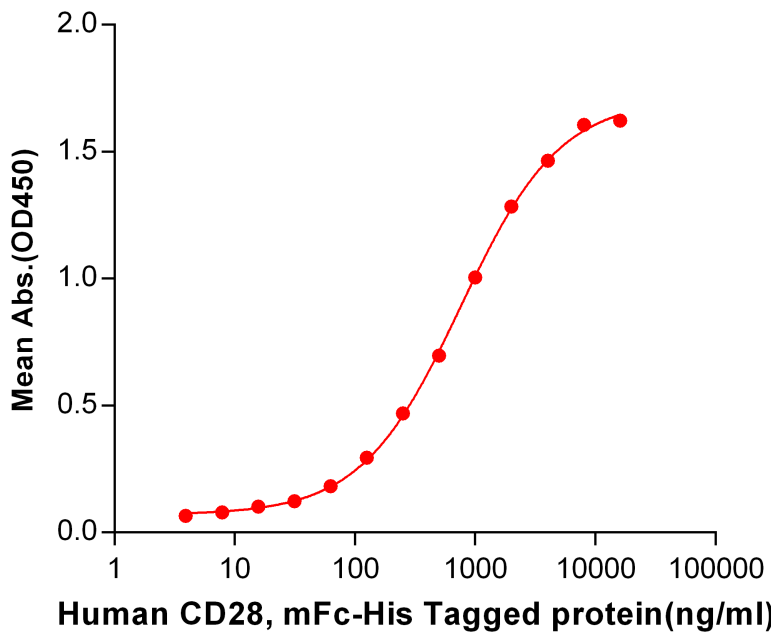


Figure 3. ELISA plate pre-coated by 2 µg/ml (100 µl/well) Human B7-2, hFc tagged protein PME100474 can bind Human CD28, mFc-His tagged protein (PME100014) in a linear range of 62.5-4000 ng/ml.

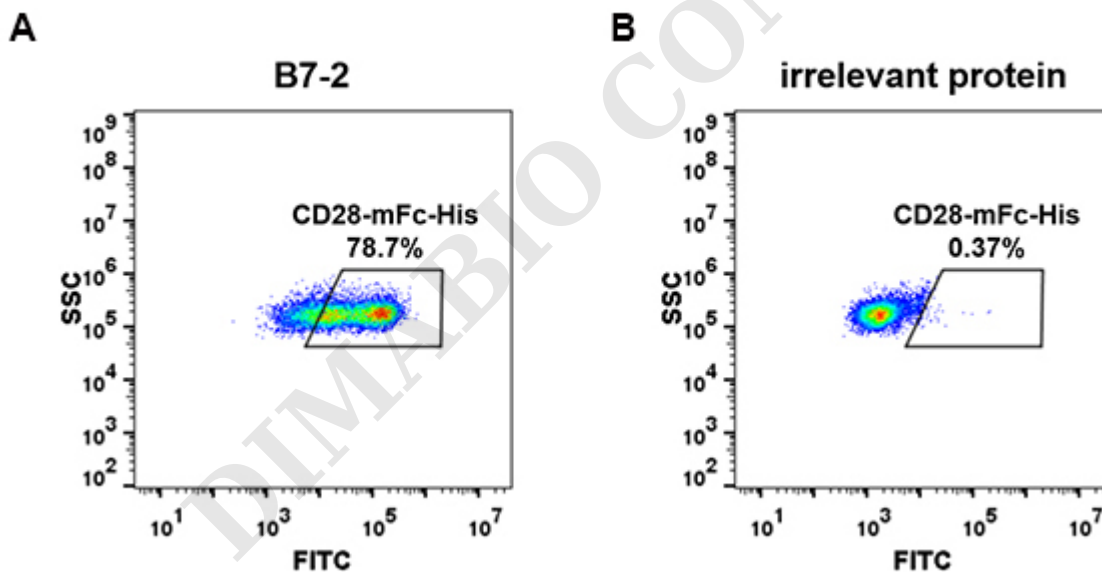


Figure 4. HEK293 cell line transfected with irrelevant protein (B) and human B7-2 (A) were surface stained with Human CD28, mFc-His tagged protein (PME100014) 1µg/ml followed by Alexa 488-conjugated anti-mouse IgG secondary antibody.

