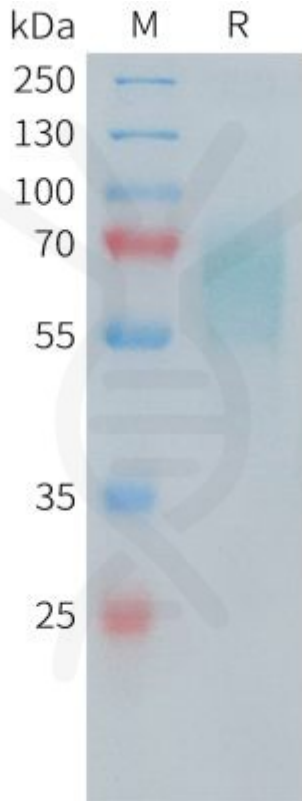


## PRODUCT INFORMATION

<b>Target</b>	CD30
<b>Synonyms</b>	TNFRSF8;CD30;D1S166E;Ki-1
<b>Description</b>	Recombinant human CD30 protein with C-terminal 6×His tag
<b>Delivery</b>	In Stock
<b>Uniprot ID</b>	P28908
<b>Expression Host</b>	HEK293
<b>Tag</b>	C-6×His Tag
<b>Molecular Characterization</b>	CD30(Phe19-Lys379) 6×His tag
<b>Molecular Weight</b>	The protein has a predicted molecular mass of 39.3 kDa after removal of the signal peptide. The apparent molecular mass of CD30-His is approximately 55-70 kDa due to glycosylation.
<b>Purity</b>	The purity of the protein is greater than 95% as determined by SDS-PAGE and Coomassie blue staining.
<b>Formulation &amp; Reconstitution</b>	Lyophilized from sterile PBS, pH 7.4. Normally 5 % - 8% trehalose is added as protectants before lyophilization. Please see Certificate of Analysis for specific instructions of reconstitution.
<b>Storage&amp;Shipping</b>	Store at -20°C to -80°C for 12 months in lyophilized form. After reconstitution, if not intended for use within a month, aliquot and store at -80°C (Avoid repeated freezing and thawing). Lyophilized proteins are shipped at ambient temperature.
<b>Sterility</b>	Products are supplied non-sterile. For cell culture applications, dilute in appropriate medium and sterile-filter (0.22 µm) prior to use.
<b>Background</b>	The protein encoded by this gene is a member of the TNF-receptor superfamily. This receptor is expressed by activated, but not by resting, T and B cells. TRAF2 and TRAF5 can interact with this receptor, and mediate the signal transduction that leads to the activation of NF-kappaB. This receptor is a positive regulator of apoptosis, and also has been shown to limit the proliferative potential of autoreactive CD8 effector T cells and protect the body against autoimmunity. Two alternatively spliced transcript variants of this gene encoding distinct isoforms have been reported.
<b>Usage</b>	Research use only
<b>Conjugate</b>	Unconjugated

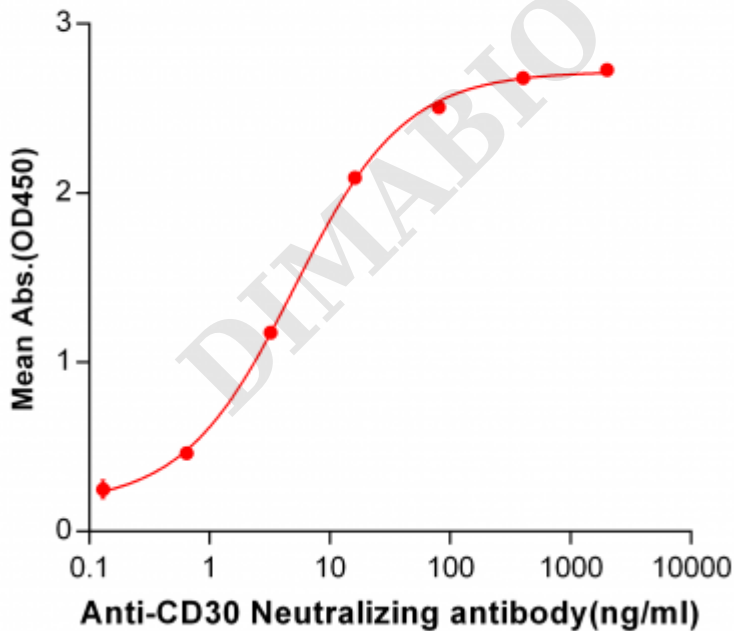




**Figure 1.** Human CD30 Protein, His Tag on SDS-PAGE under reducing condition.

### Human CD30, His Tagged protein ELISA

0.2 µg of CD30, His Tagged protein per well

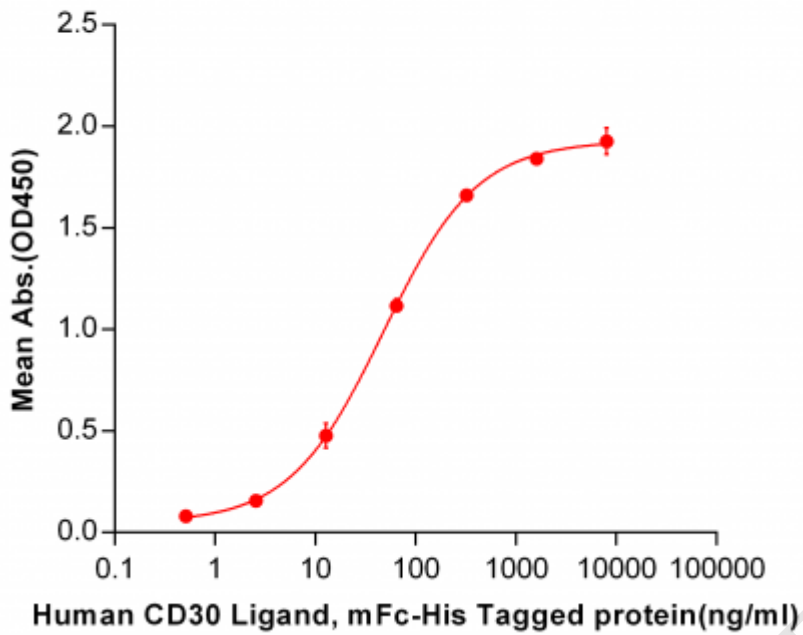


**Figure 2.** ELISA plate pre-coated by 2 µg/ml (100 µl/well) Human CD30, His tagged protein (PME100481) can bind Anti-CD30 Neutralizing antibody ([getskuurl sku="BME100017"]) in a linear range of 0.13-80.0 ng/ml.

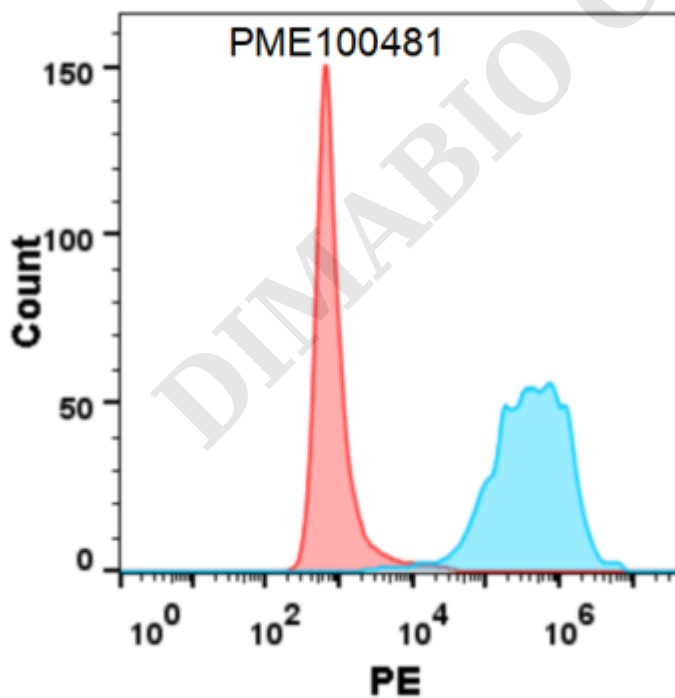


### Human CD30, His Tagged protein ELISA

0.2 µg of CD30, His Tagged protein per well



**Figure 3.** ELISA plate pre-coated by 2 µg/ml (100 µl/well) Human CD30, His tagged protein (PME100481) can bind Human CD30 Ligand, mFc-His tagged protein ([getskuurl sku="PME100041"]) in a linear range of 2.56-320 ng/ml.



**Figure 4.** Flow cytometry analysis with 1 µg/mL Human CD30 Protein, His tag (PME100481) on HEK293 cells transfected with human CD30L (Blue histogram) or HEK293 transfected with irrelevant protein (Red histogram).

