

PRODUCT INFORMATION

Target	CD37
Synonyms	CD37;TSPAN26;Tspan-26
Description	Recombinant Human CD37 protein with C-terminal human Fc tag
Delivery	In Stock
Uniprot ID	P11049
Expression Host	HEK293
Tag	C-Human Fc Tag
Molecular Characterization	CD37(Arg112-Asn241) hFc(Glu99-Ala330)
Molecular Weight	The protein has a predicted molecular mass of 41.0 kDa after removal of the signal peptide. The apparent molecular mass of CD37-hFc is approximately 35-55 kDa due to glycosylation.
Purity	The purity of the protein is greater than 95% as determined by SDS-PAGE and Coomassie blue staining.
Formulation & Reconstitution	Lyophilized from sterile PBS, pH 7.4. Normally 5% - 8% trehalose is added as protectants before lyophilization. Please see Certificate of Analysis for specific instructions of reconstitution.
Storage&Shipping	Store at -20°C to -80°C for 12 months in lyophilized form. After reconstitution, if not intended for use within a month, aliquot and store at -80°C (Avoid repeated freezing and thawing). Lyophilized proteins are shipped at ambient temperature.
Sterility	Products are supplied non-sterile. For cell culture applications, dilute in appropriate medium and sterile-filter (0.22 µm) prior to use.
Background	The protein encoded by this gene is a member of the transmembrane 4 superfamily, also known as the tetraspanin family. Most of these members are cell-surface proteins that are characterized by the presence of four hydrophobic domains. The proteins mediate signal transduction events that play a role in the regulation of cell development, activation, growth and motility. This encoded protein is a cell surface glycoprotein that is known to complex with integrins and other transmembrane 4 superfamily proteins. It may play a role in T-cell-B-cell interactions. Alternate splicing results in multiple transcript variants encoding different isoforms.
Usage	Research use only
Conjugate	Unconjugated



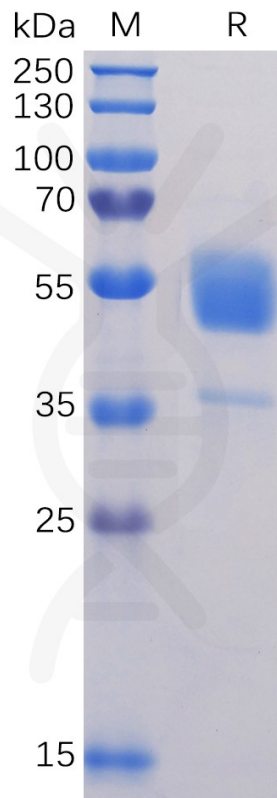


Figure 1. Human CD37 Protein, hFc Tag on SDS-PAGE under reducing condition.

DIMABIO CONFIDENTIAL

