

PRODUCT INFORMATION

Target	CD70
Synonyms	CD70;CD27LG;TNFSF7;TNFSF7G;CD27L
Description	Recombinant human CD70 protein with C-terminal human Fc and 6×His tag
Delivery	In Stock
Uniprot ID	P32970
Expression Host	HEK293
Tag	C-Human Fc and 6×His Tag
Molecular Characterization	CD70(Gln39-Pro193) hFc(Glu99-Ala330) 6×His
Molecular Weight	The protein has a predicted molecular mass of 44.1 kDa after removal of the signal peptide.
Purity	The purity of the protein is greater than 95% as determined by SDS-PAGE and Coomassie blue staining.
Formulation & Reconstitution	Lyophilized from sterile PBS, pH 7.4. Normally 5 % - 8% trehalose is added as protectants before lyophilization. Please see Certificate of Analysis for specific instructions of reconstitution.
Storage&Shipping	Store at -20°C to -80°C for 12 months in lyophilized form. After reconstitution, if not intended for use within a month, aliquot and store at -80°C (Avoid repeated freezing and thawing). Lyophilized proteins are shipped at ambient temperature.
Sterility	Products are supplied non-sterile. For cell culture applications, dilute in appropriate medium and sterile-filter (0.22 µm) prior to use.
Background	The protein encoded by this gene is a cytokine that belongs to the tumor necrosis factor (TNF) ligand family. This cytokine is a ligand for TNFRSF27/CD27. It is a surface antigen on activated, but not on resting, T and B lymphocytes. It induces proliferation of costimulated T cells, enhances the generation of cytolytic T cells, and contributes to T cell activation. This cytokine is also reported to play a role in regulating B-cell activation, cytotoxic function of natural killer cells, and immunoglobulin synthesis.
Usage	Research use only
Conjugate	Unconjugated



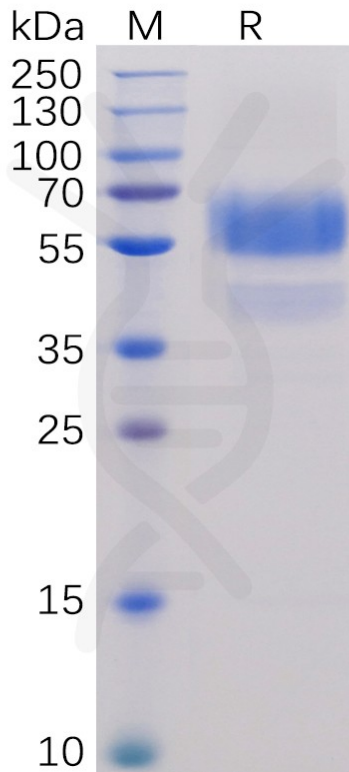


Figure 1. Human CD70 Protein, hFc-His Tag on SDS-PAGE under reducing condition.



Figure 2. Flow cytometry analysis with 15 µg/mL Human CD70 Protein, hFc-His tag (PME100486) on HEK293 cells transfected with human CD27 (Blue histogram) or HEK293 transfected with irrelevant protein (Red histogram).

