

PRODUCT INFORMATION

| | |
|---|--|
| Target | CLDN5 |
| Synonyms | Claudin-5;TMDVCF;AWAL;TMVCF |
| Description | Recombinant human CLDN5 protein with C-terminal human Fc tag |
| Delivery | In Stock |
| Uniprot ID | O00501 |
| Expression Host | HEK293 |
| Tag | C-Human Fc Tag |
| Molecular Characterization | CLDN5(Met29-Arg81) hFc(Glu99-Ala330) |
| Molecular Weight | The protein has a predicted molecular mass of 32.1 kDa after removal of the signal peptide. The apparent molecular mass of CLDN5-hFc is approximately 35-40 kDa due to glycosylation. |
| Purity | The purity of the protein is greater than 95% as determined by SDS-PAGE and Coomassie blue staining. |
| Formulation & Reconstitution | Lyophilized from sterile PBS, pH 7.4. Normally 5% - 8% trehalose is added as protectants before lyophilization. Please see Certificate of Analysis for specific instructions of reconstitution. |
| Storage&Shipping | Store at -20°C to -80°C for 12 months in lyophilized form. After reconstitution, if not intended for use within a month, aliquot and store at -80°C (Avoid repeated freezing and thawing). Lyophilized proteins are shipped at ambient temperature. |
| Sterility | Products are supplied non-sterile. For cell culture applications, dilute in appropriate medium and sterile-filter (0.22 µm) prior to use. |
| Background | This gene encodes a member of the claudin family. Claudins are integral membrane proteins and components of tight junction strands. Tight junction strands serve as a physical barrier to prevent solutes and water from passing freely through the paracellular space between epithelial or endothelial cell sheets. Mutations in this gene have been found in patients with velocardiofacial syndrome. Alternative splicing results in multiple transcript variants encoding distinct isoforms. [provided by RefSeq, May 2018] |
| Usage | Research use only |
| Conjugate | Unconjugated |



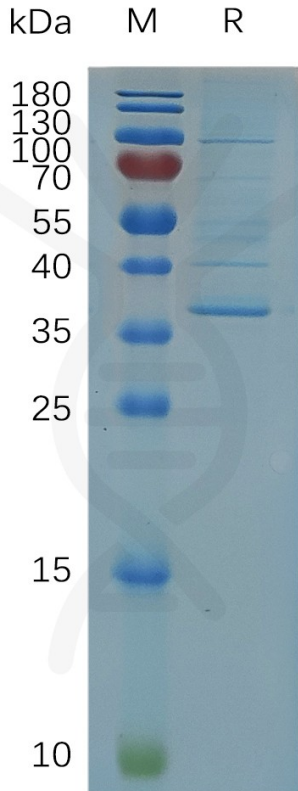


Figure 1. Human CLDN5 Protein, hFc Tag on SDS-PAGE under reducing condition.

DIMABIO CONFIDENTIAL

