

PRODUCT INFORMATION

Target	CLEC14A
Synonyms	C14orf27;CEG1;EGFR-5
Description	Recombinant human CLEC14A protein with C-terminal 6×His tag
Delivery	In Stock
Uniprot ID	Q86T13
Expression Host	HEK293
Tag	C-6×His Tag
Molecular Characterization	CLEC14A(Glu22-Ala397) 6×His tag
Molecular Weight	The protein has a predicted molecular mass of 40.7 kDa after removal of the signal peptide. The apparent molecular mass of CLEC14A-His is approximately 70-100 kDa due to glycosylation.
Purity	The purity of the protein is greater than 95% as determined by SDS-PAGE and Coomassie blue staining.
Formulation & Reconstitution	Lyophilized from sterile PBS, pH 7.4. Normally 5 % - 8% trehalose is added as protectants before lyophilization. Please see Certificate of Analysis for specific instructions of reconstitution.
Storage&Shipping	Store at -20°C to -80°C for 12 months in lyophilized form. After reconstitution, if not intended for use within a month, aliquot and store at -80°C (Avoid repeated freezing and thawing). Lyophilized proteins are shipped at ambient temperature.
Sterility	Products are supplied non-sterile. For cell culture applications, dilute in appropriate medium and sterile-filter (0.22 µm) prior to use.
Background	This gene encodes a member of the C-type lectin/C-type lectin-like domain (CTL/CTLD) superfamily. Members of this family share a common protein fold and have diverse functions, such as cell adhesion, cell-cell signalling, glycoprotein turnover, and roles in inflammation and immune response. This family member plays a role in cell-cell adhesion and angiogenesis. It functions in filopodia formation, cell migration and tube formation. Due to its presence at higher levels in tumor endothelium than in normal tissue endothelium, it is considered to be a candidate for tumor vascular targeting. [provided by RefSeq, Jan 2012]
Usage	Research use only
Conjugate	Unconjugated



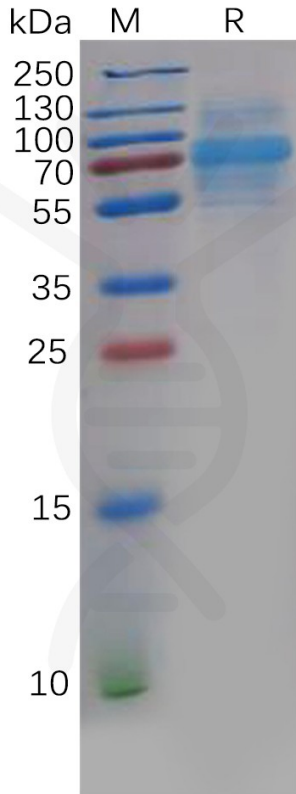


Figure 1. Human CLEC14A Protein, His Tag on SDS-PAGE under reducing condition.

