

**PRODUCT INFORMATION**

<b>Target</b>	CS1
<b>Synonyms</b>	SLAMF7;CD319;CS1;CRACC;19A;FOAP-12
<b>Description</b>	Recombinant human CS1 protein with C-terminal human Fc and 6×His tag
<b>Delivery</b>	In Stock
<b>Uniprot ID</b>	Q9NQ25
<b>Expression Host</b>	HEK293
<b>Tag</b>	C-Human Fc and 6×His Tag
<b>Molecular Characterization</b>	CS1(Ser23-Asp223) hFc(Glu99-Ala330) 6×His tag
<b>Molecular Weight</b>	The protein has a predicted molecular mass of 70 kDa after removal of the signal peptide.
<b>Purity</b>	The purity of the protein is greater than 95% as determined by SDS-PAGE and Coomassie blue staining.
<b>Formulation &amp; Reconstitution</b>	Lyophilized from sterile PBS, pH 7.4. Normally 5 % - 8% trehalose is added as protectants before lyophilization. Please see Certificate of Analysis for specific instructions of reconstitution.
<b>Storage&amp;Shipping</b>	Store at -20°C to -80°C for 12 months in lyophilized form. After reconstitution, if not intended for use within a month, aliquot and store at -80°C (Avoid repeated freezing and thawing). Lyophilized proteins are shipped at ambient temperature.
<b>Sterility</b>	Products are supplied non-sterile. For cell culture applications, dilute in appropriate medium and sterile-filter (0.22 µm) prior to use.
<b>Background</b>	SLAM family member 7 (SLAMF7) is also known as CD2-like receptor-activating cytotoxic cells (CRACC), Membrane protein FOAP-12, CD antigen CD319, Novel Ly9, Protein 19A, which is a single-pass type I membrane protein and a member of the CD2 family of cell surface receptors. SLAMF7 is expressed in spleen, lymph node, peripheral blood leukocytes, bone marrow, small intestine, stomach, appendix, lung and trachea. Isoform 1 of SLAMF7 mediates NK cell activation through a SH2D1A-independent extracellular signal-regulated ERK-mediated pathway. May play a role in lymphocyte adhesion. Isoform 3 of SLAMF7 does not mediate any NK cell activation.
<b>Usage</b>	Research use only
<b>Conjugate</b>	Unconjugated



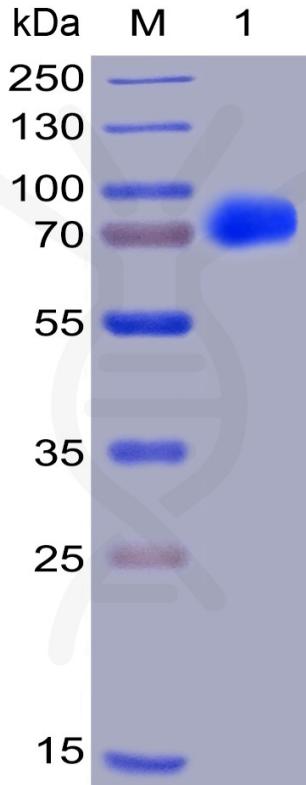


Figure 1. Human CS1, hFc-His Tag on SDS-PAGE under reducing condition.

### Human CS1, hFc Tagged protein ELISA

0.2  $\mu$ g of Human CS1, hFc-His Tagged protein per well

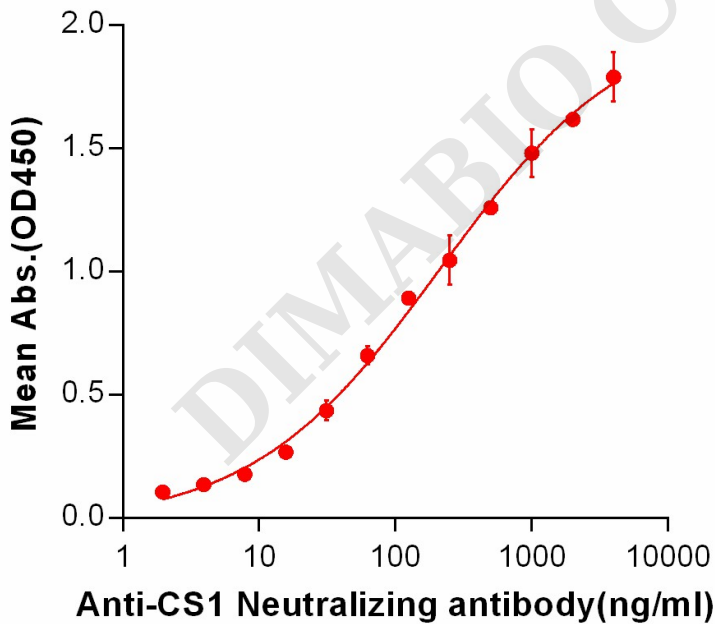


Figure 2. ELISA plate pre-coated by 2  $\mu$ g/ml (100  $\mu$ l/well) Human CS1, hFc-His tagged protein (PME100002) can bind Anti-CS1 Neutralizing antibody BME100002 in a linear range of 7.81-210.7 ng/ml.

