

PRODUCT INFORMATION

Target	CSF1R
Synonyms	CSF1R;C-FMS;CD115;CSFR;FIM2;FMS;M-CSFR
Description	Recombinant human CSF1R protein with C-terminal 6×His tag
Delivery	In Stock
Uniprot ID	P07333
Expression Host	HEK293
Tag	C-6×His Tag
Molecular Characterization	CSF1R(Ile20-Leu514) 6×His tag
Molecular Weight	The protein has a predicted molecular mass of 55.6 kDa after removal of the signal peptide.
Purity	The purity of the protein is greater than 95% as determined by SDS-PAGE and Coomassie blue staining.
Formulation & Reconstitution	Lyophilized from sterile PBS, pH 7.4. Normally 5 % - 8% trehalose is added as protectants before lyophilization. Please see Certificate of Analysis for specific instructions of reconstitution.
Storage&Shipping	Store at -20°C to -80°C for 12 months in lyophilized form. After reconstitution, if not intended for use within a month, aliquot and store at -80°C (Avoid repeated freezing and thawing). Lyophilized proteins are shipped at ambient temperature.
Sterility	Products are supplied non-sterile. For cell culture applications, dilute in appropriate medium and sterile-filter (0.22 µm) prior to use.
Background	The protein encoded by this gene is the receptor for colony stimulating factor 1, a cytokine which controls the production, differentiation, and function of macrophages. This receptor mediates most if not all of the biological effects of this cytokine. Ligand binding activates the receptor kinase through a process of oligomerization and transphosphorylation. The encoded protein is a tyrosine kinase transmembrane receptor and member of the CSF1/PDGF receptor family of tyrosine-protein kinases. Mutations in this gene have been associated with a predisposition to myeloid malignancy. The first intron of this gene contains a transcriptionally inactive ribosomal protein L7 processed pseudogene oriented in the opposite direction. Alternative splicing results in multiple transcript variants. Expression of a splice variant from an LTR promoter has been found in Hodgkin lymphoma (HL), HL cell lines and anaplastic large cell lymphoma.
Usage	Research use only
Conjugate	Unconjugated



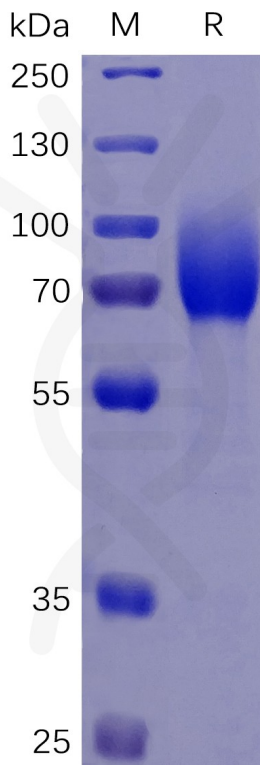


Figure 1. Human CSF1R Protein, His Tag on SDS-PAGE under reducing condition.

Human CSF1R, His tagged protein ELISA

0.2 μ g of Human CSF1R, His tagged protein per well

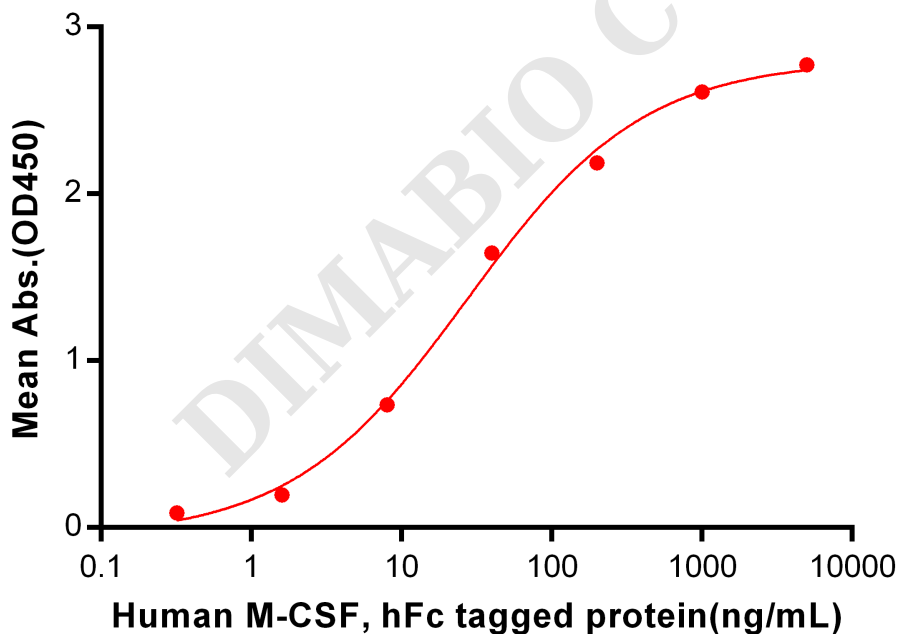


Figure 2. ELISA plate pre-coated by 2 μ g/ml (100 μ l/well) Human CSF1R, His tagged protein (PME100067) can bind Human M-CSF, hFc Tagged protein PME100550 in a linear range of 0.32-200 ng/ml.



Human CSF1R, His tagged protein ELISA

0.1 μ g of Human CSF1R, His tagged protein per well

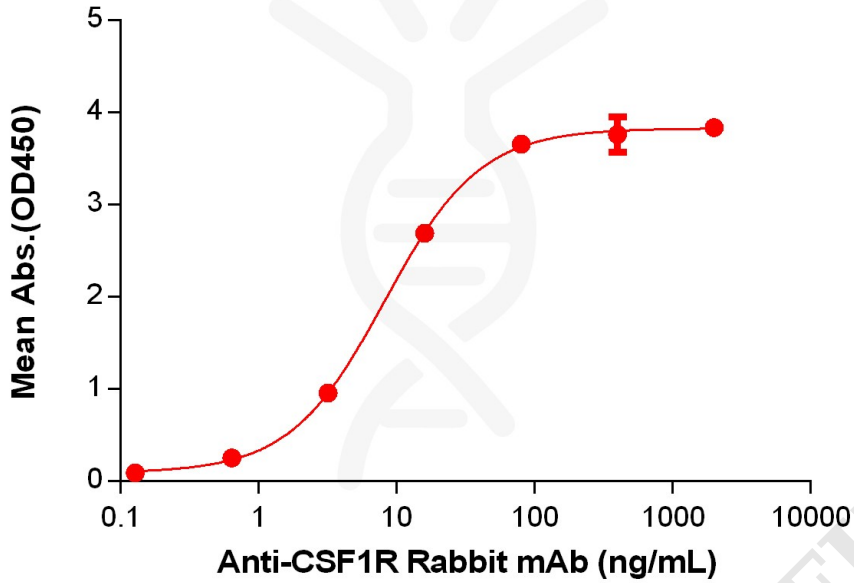


Figure 3. ELISA plate pre-coated by 1 μ g/mL (100 μ L/well) Human CSF1R Protein, His Tag (PME100067) can bind Anti-CSF1R Rabbit mAb in a linear range of 3.2-16 ng/mL.

