

**PRODUCT INFORMATION**

<b>Target</b>	EPHA2
<b>Synonyms</b>	ARCC2;CTPA;CTPP1;CTRCT6;ECK
<b>Description</b>	Recombinant Human EPHA2 Protein with C-terminal 6×His tag
<b>Delivery</b>	In Stock
<b>Uniprot ID</b>	P29317
<b>Expression Host</b>	HEK293
<b>Tag</b>	C-6×His Tag
<b>Molecular Characterization</b>	EPHA2 (Ala24-Asn534) 6×His tag
<b>Molecular Weight</b>	The protein has a predicted molecular mass of 57.0 kDa after removal of the signal peptide. The apparent molecular mass of EPHA2-His is approximately 55-70 kDa due to glycosylation.
<b>Purity</b>	The purity of the protein is greater than 95% as determined by SDS-PAGE and Coomassie blue staining.
<b>Formulation &amp; Reconstitution</b>	Lyophilized from sterile PBS, pH 7.4. Normally 5 % - 8% trehalose is added as protectants before lyophilization. Please see Certificate of Analysis for specific instructions of reconstitution.
<b>Storage&amp;Shipping</b>	Store at -20°C to -80°C for 12 months in lyophilized form. After reconstitution, if not intended for use within a month, aliquot and store at -80°C (Avoid repeated freezing and thawing). Lyophilized proteins are shipped at ambient temperature.
<b>Sterility</b>	Products are supplied non-sterile. For cell culture applications, dilute in appropriate medium and sterile-filter (0.22 µm) prior to use.
<b>Background</b>	This gene belongs to the ephrin receptor subfamily of the protein-tyrosine kinase family. EPH and EPH-related receptors have been implicated in mediating developmental events, particularly in the nervous system. Receptors in the EPH subfamily typically have a single kinase domain and an extracellular region containing a Cys-rich domain and 2 fibronectin type III repeats. The ephrin receptors are divided into 2 groups based on the similarity of their extracellular domain sequences and their affinities for binding ephrin-A and ephrin-B ligands. This gene encodes a protein that binds ephrin-A ligands. Mutations in this gene are the cause of certain genetically-related cataract disorders.[provided by RefSeq, May 2010]
<b>Usage</b>	Research use only
<b>Conjugate</b>	Unconjugated



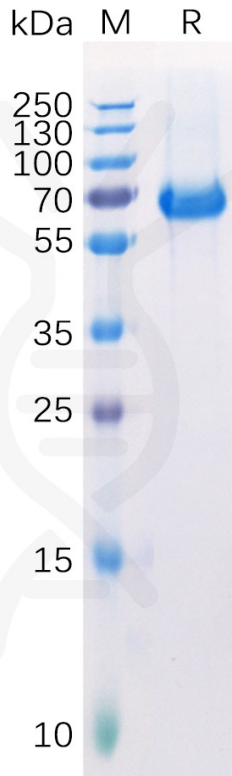


Figure 1. Human EPHA2 Protein, His Tag on SDS-PAGE under reducing condition.

### Human EPHA2, His tagged protein ELISA

0.1  $\mu\text{g}$  of Human EPHA2, His tagged protein per well

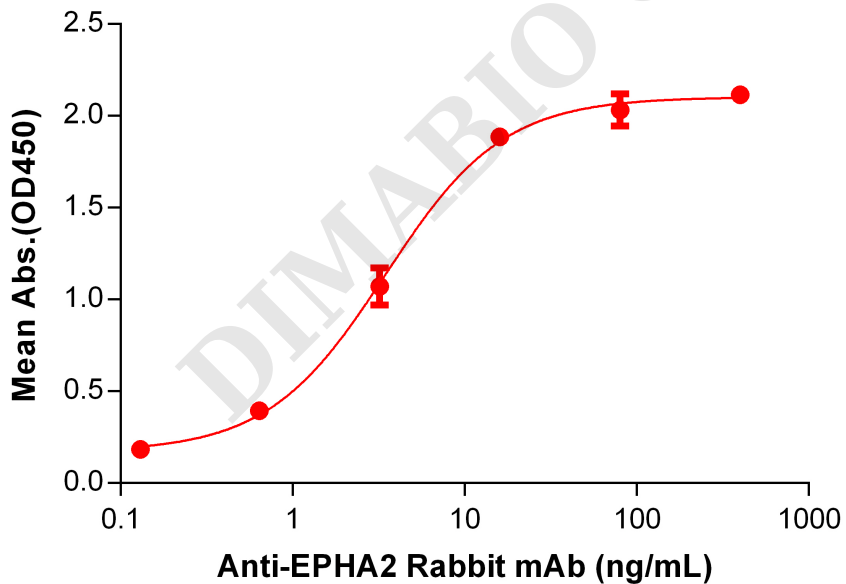


Figure 2. ELISA plate pre-coated by 1  $\mu\text{g}/\text{mL}$  (100  $\mu\text{L}/\text{well}$ ) Human EPHA2 protein, His Tag (PME100238) can bind Anti-EPHA2 Rabbit mAb in a linear range of 0.128-16 ng/mL.

