

PRODUCT INFORMATION

Target	FASLG
Synonyms	ALPS1B;APTL1LG1;APTL;CD95-L;CD95L;CD178;FASL;TNFSF6;TNLG1A
Description	Recombinant human FASLG with N-terminal human Fc tag
Delivery	In Stock
Uniprot ID	P48023
Expression Host	HEK293
Tag	N-Human Fc Tag
Molecular Characterization	hFc(Glu99-Ala330) FASLG(Pro134-Leu281)
Molecular Weight	The protein has a predicted molecular mass of 43.0 kDa after removal of the signal peptide. The apparent molecular mass of hFc-FASLG is approximately 35-55kDa due to glycosylation.
Purity	The purity of the protein is greater than 95% as determined by SDS-PAGE and Coomassie blue staining.
Formulation & Reconstitution	Lyophilized from sterile PBS, pH 7.4. Normally 5 % - 8% trehalose is added as protectants before lyophilization. Please see Certificate of Analysis for specific instructions of reconstitution.
Storage&Shipping	Store at -20°C to -80°C for 12 months in lyophilized form. After reconstitution, if not intended for use within a month, aliquot and store at -80°C (Avoid repeated freezing and thawing). Lyophilized proteins are shipped at ambient temperature.
Sterility	Products are supplied non-sterile. For cell culture applications, dilute in appropriate medium and sterile-filter (0.22 µm) prior to use.
Background	This gene is a member of the tumor necrosis factor superfamily. The primary function of the encoded transmembrane protein is the induction of apoptosis triggered by binding to FAS. The FAS/FASLG signaling pathway is essential for immune system regulation, including activation-induced cell death (AICD) of T cells and cytotoxic T lymphocyte induced cell death. It has also been implicated in the progression of several cancers. Defects in this gene may be related to some cases of systemic lupus erythematosus (SLE). Alternatively spliced transcript variants have been described. [provided by RefSeq, Nov 2014]
Usage	Research use only
Conjugate	Unconjugated



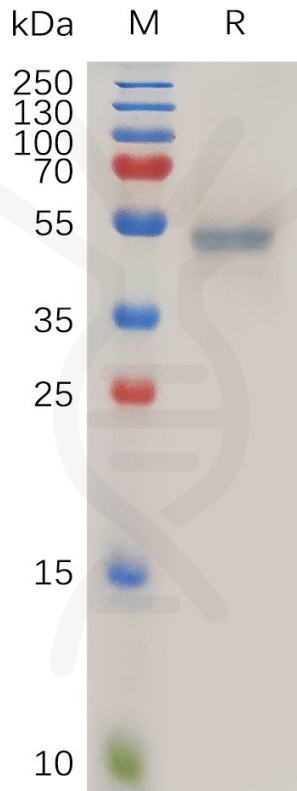


Figure 1. Human FASLG Protein, N-hFc Tag on SDS-PAGE under reducing condition.

DIMABIO CONFIDENTIAL

