

PRODUCT INFORMATION

Target	GAS6
Synonyms	AXLLG;AXSF
Description	Recombinant human GAS6 protein with C-terminal 6×His tag
Delivery	In Stock
Uniprot ID	Q14393
Expression Host	HEK293
Tag	C-6×His Tag
Molecular Characterization	GAS6(Ala31-Ala678) 6×His tag
Molecular Weight	The protein has a predicted molecular mass of 72.7 kDa after removal of the signal peptide. The apparent molecular mass of GAS6-His is approximately 70-100 kDa due to glycosylation.
Purity	The purity of the protein is greater than 85% as determined by SDS-PAGE and Coomassie blue staining.
Formulation & Reconstitution	Lyophilized from sterile PBS, pH 7.4. Normally 5% - 8% trehalose is added as protectants before lyophilization. Please see Certificate of Analysis for specific instructions of reconstitution.
Storage&Shipping	Store at -20°C to -80°C for 12 months in lyophilized form. After reconstitution, if not intended for use within a month, aliquot and store at -80°C (Avoid repeated freezing and thawing). Lyophilized proteins are shipped at ambient temperature.
Sterility	Products are supplied non-sterile. For cell culture applications, dilute in appropriate medium and sterile-filter (0.22 µm) prior to use.
Background	This gene encodes a gamma-carboxyglutamic acid (Gla)-containing protein thought to be involved in the stimulation of cell proliferation. This gene is frequently overexpressed in many cancers and has been implicated as an adverse prognostic marker. Elevated protein levels are additionally associated with a variety of disease states, including venous thromboembolic disease, systemic lupus erythematosus, chronic renal failure, and preeclampsia. [provided by RefSeq, Aug 2014]
Usage	Research use only
Conjugate	Unconjugated



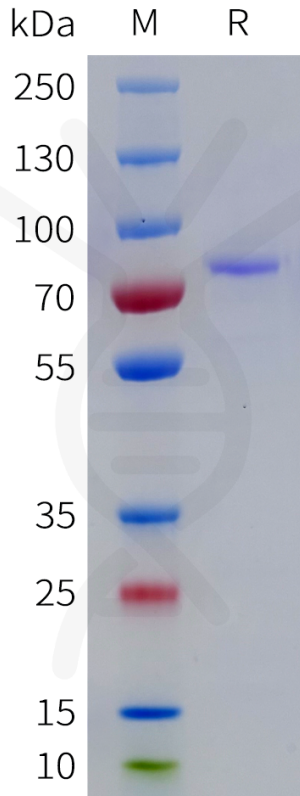


Figure 1. Human GAS6 Protein, His Tag on SDS-PAGE under reducing condition.

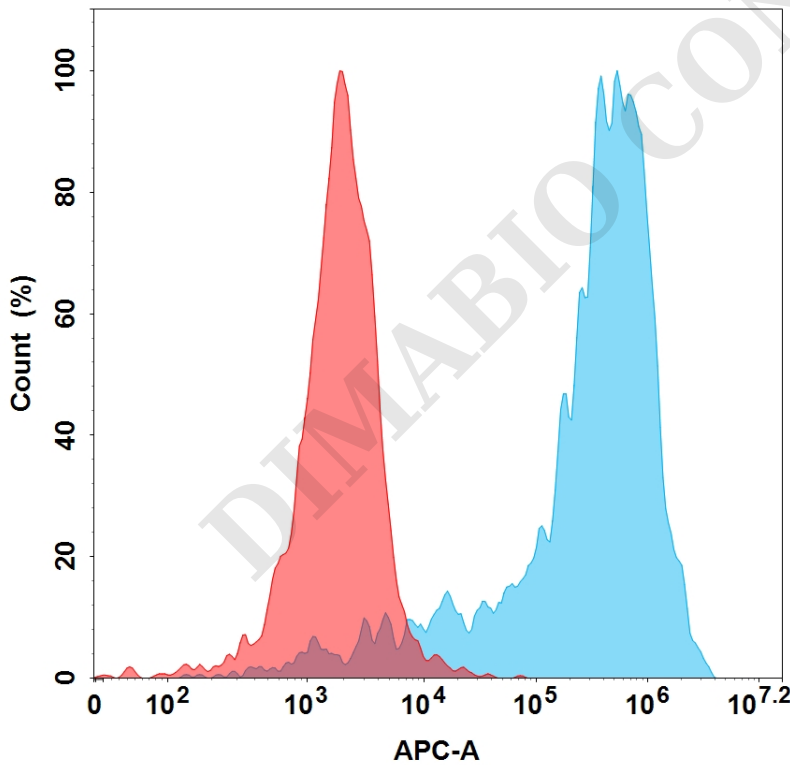


Figure 2. Flow cytometry analysis with 15 $\mu\text{g}/\text{mL}$ Human GAS6 Protein, His Tag (PME100619) on HEK293 cells transfected with Human AXL protein (Blue histogram) or HEK293 transfected with irrelevant protein (Red histogram).



Human GAS6, His Tagged protein ELISA

0.2 μ g of Human GAS6, His tagged protein per well

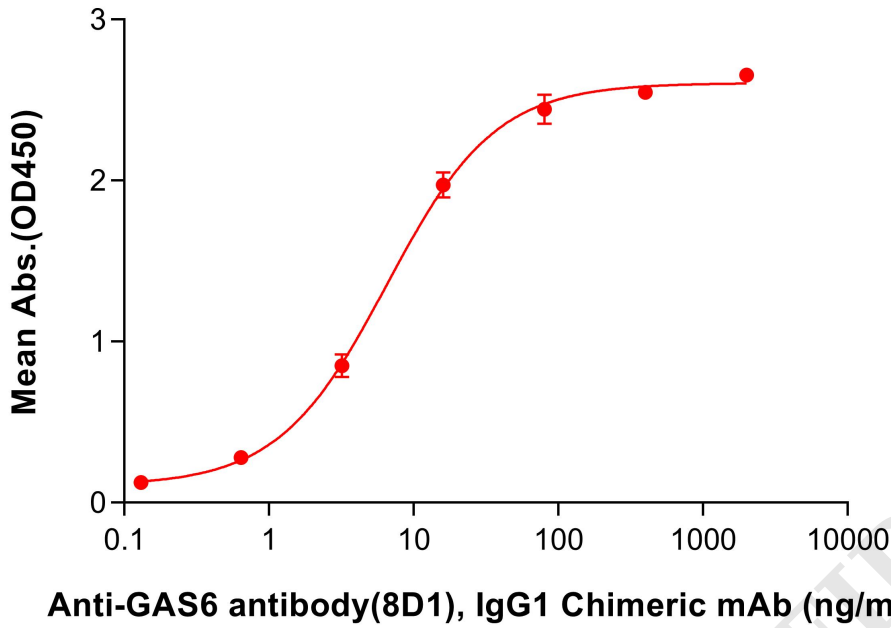


Figure 3. ELISA plate pre-coated by 2 μ g/mL (100 μ L/well) Human GAS6 Protein, His Tag (PME100619) can bind Anti-GAS6 antibody(8D1), IgG1 Chimeric mAb (DMC101359) in a linear range of 3.2-16 ng/mL.

