

PRODUCT INFORMATION

Target	GM-CSFR
Synonyms	alphaGMR;CD116;CDw116;CSF2R;CSF2RAX;CSF2RAY;CSF2RX;CSF2RY;GM-CSF-R-alpha;GMC5FR;GMC5FR-alpha;GMR;GMR-alpha;SMDP4
Description	Recombinant Human GM-CSFR Protein with C-terminal human Fc tag
Delivery	In Stock
Uniprot ID	P15509
Expression Host	HEK293
Tag	C-Human Fc Tag
Molecular Characterization	GM-CSFR(Glu23-Gly320) hFc(Glu99-Ala330)
Molecular Weight	The protein has a predicted molecular mass of 60.6 kDa after removal of the signal peptide. The apparent molecular mass of GM-CSFR-hFc is approximately 70-130 kDa due to glycosylation.
Purity	The purity of the protein is greater than 95% as determined by SDS-PAGE and Coomassie blue staining.
Formulation & Reconstitution	Lyophilized from sterile PBS, pH 7.4. Normally 5% - 8% trehalose is added as protectants before lyophilization. Please see Certificate of Analysis for specific instructions of reconstitution.
Storage & Shipping	Store at -20°C to -80°C for 12 months in lyophilized form. After reconstitution, if not intended for use within a month, aliquot and store at -80°C (Avoid repeated freezing and thawing). Lyophilized proteins are shipped at ambient temperature.
Sterility	Products are supplied non-sterile. For cell culture applications, dilute in appropriate medium and sterile-filter (0.22 µm) prior to use.
Background	The protein encoded by this gene is the alpha subunit of the heterodimeric receptor for colony stimulating factor 2, a cytokine which controls the production, differentiation, and function of granulocytes and macrophages. The encoded protein is a member of the cytokine family of receptors. This gene is found in the pseudoautosomal region (PAR) of the X and Y chromosomes. Multiple transcript variants encoding different isoforms have been found for this gene, with some of the isoforms being membrane-bound and others being soluble. [provided by RefSeq, Jul 2008]
Usage	Research use only
Conjugate	Unconjugated

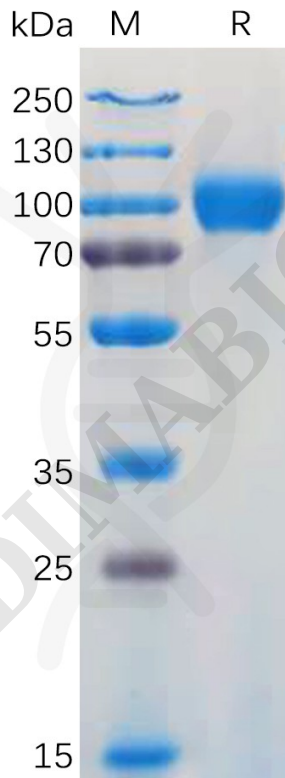


Figure 1. Human GM-CSFR Protein, hFc Tag on SDS-PAGE under reducing condition.

