

PRODUCT INFORMATION

Target	IL12B
Synonyms	IL-12B;CLMF p40;IL-12 subunit p40;NKSF2
Description	Recombinant human IL12B protein with C-terminal 6×His tag
Delivery	In Stock
Uniprot ID	P29460
Expression Host	HEK293
Tag	C-6×His Tag
Molecular Characterization	IL12B(Ile23-Ser328) 6×His tag
Molecular Weight	The protein has a predicted molecular mass of 35.5 kDa after removal of the signal peptide. The apparent molecular mass of IL12B-His is approximately 35-55 kDa due to glycosylation.
Purity	The purity of the protein is greater than 85% as determined by SDS-PAGE and Coomassie blue staining.
Formulation & Reconstitution	Lyophilized from sterile PBS, pH 7.4. Normally 5 % - 8% trehalose is added as protectants before lyophilization. Please see Certificate of Analysis for specific instructions of reconstitution.
Storage&Shipping	Store at -20°C to -80°C for 12 months in lyophilized form. After reconstitution, if not intended for use within a month, aliquot and store at -80°C (Avoid repeated freezing and thawing). Lyophilized proteins are shipped at ambient temperature.
Sterility	Products are supplied non-sterile. For cell culture applications, dilute in appropriate medium and sterile-filter (0.22 µm) prior to use.
Background	This gene encodes a subunit of interleukin 12, a cytokine that acts on T and natural killer cells, and has a broad array of biological activities. Interleukin 12 is a disulfide-linked heterodimer composed of the 40 kD cytokine receptor like subunit encoded by this gene, and a 35 kD subunit encoded by IL12A. This cytokine is expressed by activated macrophages that serve as an essential inducer of Th1 cells development. This cytokine has been found to be important for sustaining a sufficient number of memory/effector Th1 cells to mediate long-term protection to an intracellular pathogen. Overexpression of this gene was observed in the central nervous system of patients with multiple sclerosis (MS), suggesting a role of this cytokine in the pathogenesis of the disease. The promoter polymorphism of this gene has been reported to be associated with the severity of atopic and non-atopic asthma in children. [provided by RefSeq, Jul 2008]
Usage	Research use only
Conjugate	Unconjugated



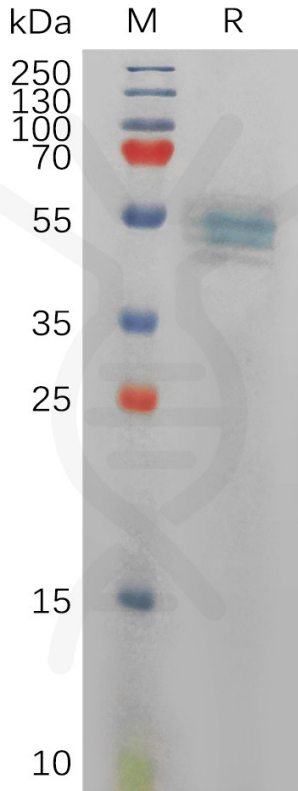


Figure 1. Human IL12B Protein, His Tag on SDS-PAGE under reducing condition.

Human IL12B, His Tagged protein ELISA

0.2 µg of Human IL12B, His tagged protein per well

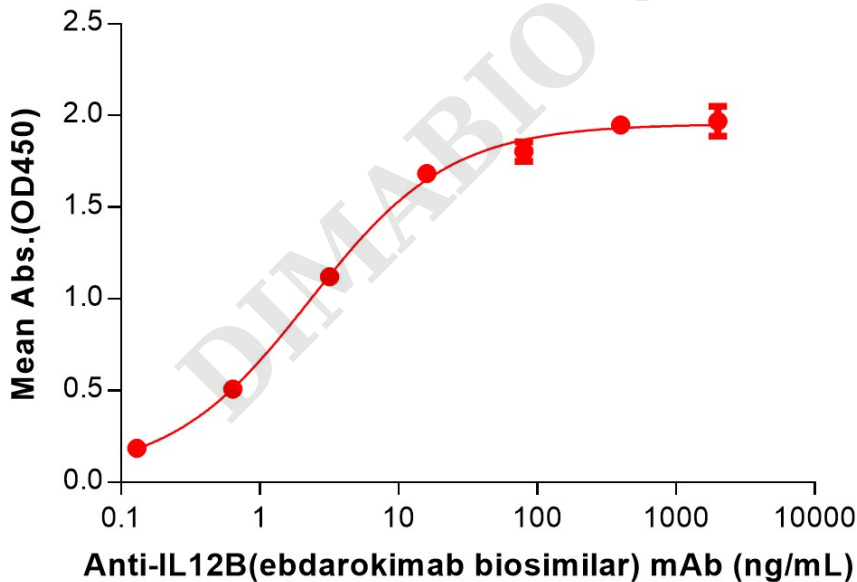


Figure 2. ELISA plate pre-coated by 2 µg/mL (100 µL/well) Human IL12B Protein, His Tag (PME101133) can bind Anti-IL12B(ebdarokimab biosimilar) mAb (BME100223) in a linear range of 0.13-16 ng/mL.

