

PRODUCT INFORMATION

Target	IL4RA
Synonyms	CD124;IL-4RA;IL4RA
Description	Recombinant human IL4RA Protein with C-terminal Human Fc tag
Delivery	In Stock
Uniprot ID	P24394
Expression Host	HEK293
Tag	C-Human Fc Tag
Molecular Characterization	IL4RA(Met26-His232) hFc(Glu99-Ala330)
Molecular Weight	The protein has a predicted molecular mass of 49.9 kDa after removal of the signal peptide. The apparent molecular mass of IL4RA-hFc is approximately 55-70 kDa due to glycosylation.
Purity	The purity of the protein is greater than 95% as determined by SDS-PAGE and Coomassie blue staining.
Formulation & Reconstitution	Lyophilized from sterile PBS, pH 7.4. Normally 5 % - 8% trehalose is added as protectants before lyophilization. Please see Certificate of Analysis for specific instructions of reconstitution.
Storage & Shipping	Store at -20°C to -80°C for 12 months in lyophilized form. After reconstitution, if not intended for use within a month, aliquot and store at -80°C (Avoid repeated freezing and thawing). Lyophilized proteins are shipped at ambient temperature.
Background	This gene encodes the alpha chain of the interleukin-4 receptor, a type I transmembrane protein that can bind interleukin 4 and interleukin 13 to regulate IgE production. The encoded protein also can bind interleukin 4 to promote differentiation of Th2 cells. A soluble form of the encoded protein can be produced by proteolysis of the membrane-bound protein, and this soluble form can inhibit IL4-mediated cell proliferation and IL5 upregulation by T-cells. Allelic variations in this gene have been associated with atopy, a condition that can manifest itself as allergic rhinitis, sinusitis, asthma, or eczema. Polymorphisms in this gene are also associated with resistance to human immunodeficiency virus type-1 infection. Alternate splicing results in multiple transcript variants.
Usage	Research use only



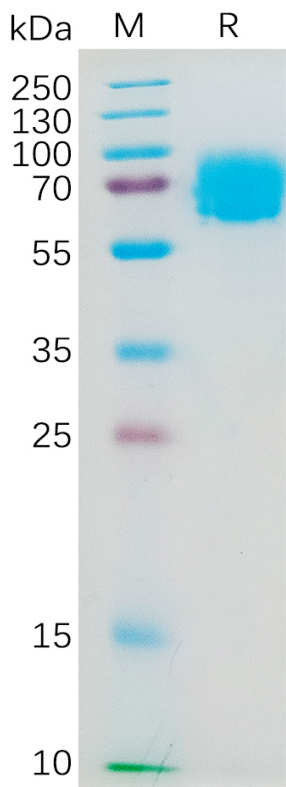


Figure 1. Human IL4RA Protein, hFc Tag on SDS-PAGE under reducing condition.

**Human IL4RA,hFc Tagged protein ELISA**  
0.2  $\mu$ g of Human IL4RA, hFc tagged protein per well

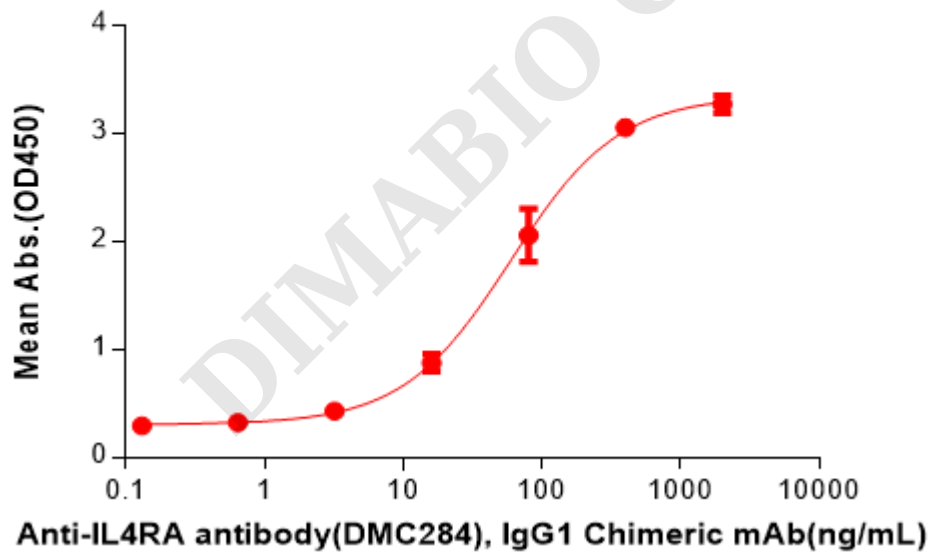


Figure 2. ELISA plate pre-coated by 2  $\mu$ g/mL (100  $\mu$ L/well) Human IL4RA Protein, hFc Tag(PME100809) can bind Anti-IL4RA antibody(DMC284), IgG1 Chimeric mAb in a linear range of 16.0–400 ng/mL.

