

PRODUCT INFORMATION

Target	IL6R
Synonyms	CD126;gp80;IL-6R-1;IL-6RA;IL6Q;IL6RA;IL6RQ
Description	Recombinant Human IL6R with C-terminal human Fc tag
Delivery	In Stock
Uniprot ID	P08887
Expression Host	HEK293
Tag	C-Human Fc Tag
Molecular Characterization	IL6R(Leu20-Pro365) hFc(Glu99-Ala330)
Molecular Weight	The protein has a predicted molecular mass of 64.7 kDa after removal of the signal peptide. The apparent molecular mass of IL6R-hFc is approximately 70-100 kDa due to glycosylation.
Purity	The purity of the protein is greater than 95% as determined by SDS-PAGE and Coomassie blue staining.
Formulation & Reconstitution	Lyophilized from sterile PBS, pH 7.4. Normally 5 % - 8% trehalose is added as protectants before lyophilization. Please see Certificate of Analysis for specific instructions of reconstitution.
Storage & Shipping	Store at -20°C to -80°C for 12 months in lyophilized form. After reconstitution, if not intended for use within a month, aliquot and store at -80°C (Avoid repeated freezing and thawing). Lyophilized proteins are shipped at ambient temperature.
Background	This gene encodes a subunit of the interleukin 6 (IL6) receptor complex. Interleukin 6 is a potent pleiotropic cytokine that regulates cell growth and differentiation and plays an important role in the immune response. The IL6 receptor is a protein complex consisting of this protein and interleukin 6 signal transducer (IL6ST/GP130/IL6-beta), a receptor subunit also shared by many other cytokines. Dysregulated production of IL6 and this receptor are implicated in the pathogenesis of many diseases, such as multiple myeloma, autoimmune diseases and prostate cancer. Alternatively spliced transcript variants encoding distinct isoforms have been reported. A pseudogene of this gene is found on chromosome 9.
Usage	Research use only



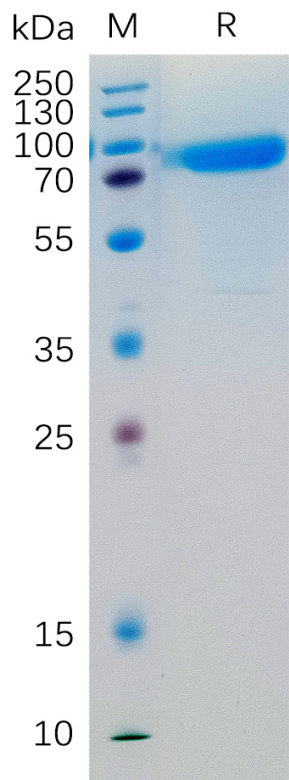


Figure 1. Human IL6R Protein, hFc Tag on SDS-PAGE under reducing condition.

**Human IL6R, hFc tagged protein ELISA**  
0.1 µg of Human IL6R, hFc tagged protein per well

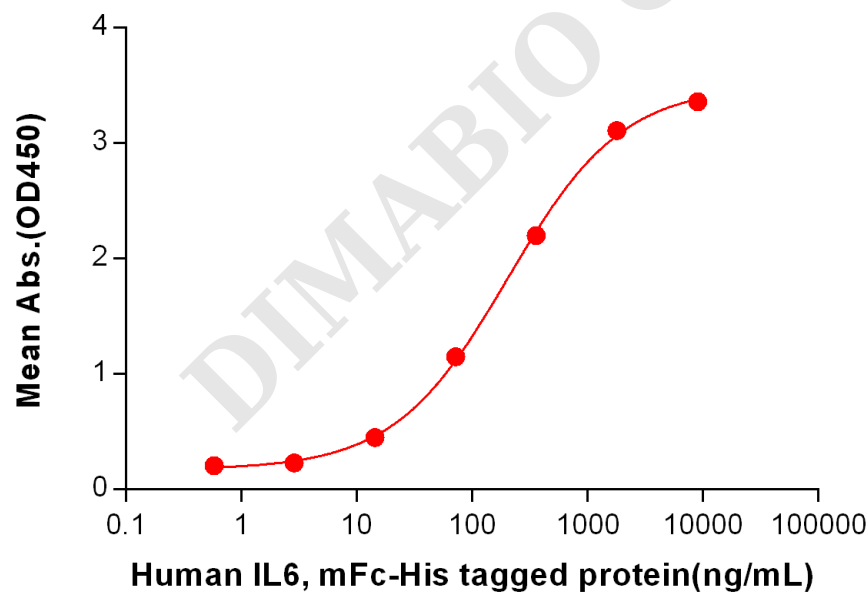


Figure 2. ELISA plate pre-coated by 1 µg/ml (100 µl/well) Human IL6R, hFc tagged protein (PME100535) can bind Human IL6, mFc-His tagged protein PME100032 in a linear range of 14.4-360 ng/ml.

