

PRODUCT INFORMATION

Target	LIPG
Synonyms	Endothelial lipase;EDL;EL;Phospholipase A1
Description	Recombinant human LIPG protein with C-terminal 6×His tag
Delivery	In Stock
Uniprot ID	Q9Y5X9
Expression Host	HEK293
Tag	C-6×His Tag
Molecular Characterization	LIPG(Ser21-Pro500) 6×His tag
Molecular Weight	The protein has a predicted molecular mass of 55.4 kDa after removal of the signal peptide. The apparent molecular mass of LIPG-His is approximately 55-70 kDa due to glycosylation.
Purity	The purity of the protein is greater than 80% as determined by SDS-PAGE and Coomassie blue staining.
Formulation & Reconstitution	Lyophilized from sterile PBS, pH 7.4. Normally 5 % - 8% trehalose is added as protectants before lyophilization. Please see Certificate of Analysis for specific instructions of reconstitution.
Storage&Shipping	Store at -20°C to -80°C for 12 months in lyophilized form. After reconstitution, if not intended for use within a month, aliquot and store at -80°C (Avoid repeated freezing and thawing). Lyophilized proteins are shipped at ambient temperature.
Sterility	Products are supplied non-sterile. For cell culture applications, dilute in appropriate medium and sterile-filter (0.22 µm) prior to use.
Background	The protein encoded by this gene has substantial phospholipase activity and may be involved in lipoprotein metabolism and vascular biology. This protein is designated a member of the TG lipase family by its sequence and characteristic lid region which provides substrate specificity for enzymes of the TG lipase family. [provided by RefSeq, Jul 2008]
Usage	Research use only
Conjugate	Unconjugated



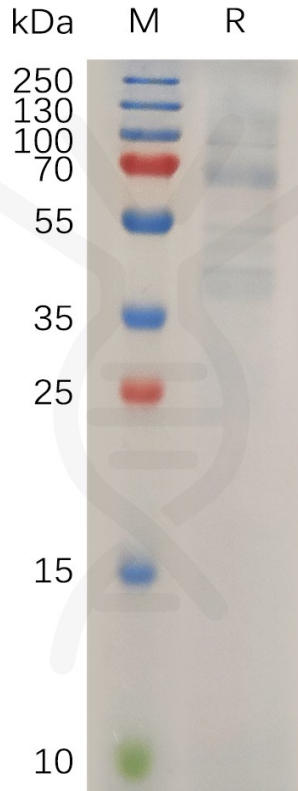


Figure 1. Human LIPG Protein, His Tag on SDS-PAGE under reducing condition.

DIMABIO CONFIDENTIAL

