

PRODUCT INFORMATION

Target	LRRC32
Synonyms	D11S833E;GARP
Description	Recombinant Human LRRC32 Protein with C-terminal human Fc tag
Delivery	In Stock
Uniprot ID	Q14392
Expression Host	HEK293
Tag	C-Human Fc Tag
Molecular Characterization	LRRC32(His20-Asn627) hFc(Glu99-Ala330)
Molecular Weight	The protein has a predicted molecular mass of 92.1 kDa after removal of the signal peptide. The apparent molecular mass of LRRC32-hFc is approximately 70-100 kDa due to glycosylation.
Purity	The purity of the protein is greater than 95% as determined by SDS-PAGE and Coomassie blue staining.
Formulation & Reconstitution	Lyophilized from sterile PBS, pH 7.4. Normally 5 % - 8% trehalose is added as protectants before lyophilization. Please see Certificate of Analysis for specific instructions of reconstitution.
Storage & Shipping	Store at -20°C to -80°C for 12 months in lyophilized form. After reconstitution, if not intended for use within a month, aliquot and store at -80°C (Avoid repeated freezing and thawing). Lyophilized proteins are shipped at ambient temperature.
Background	This gene encodes a type I membrane protein which contains 20 leucine-rich repeats. Alterations in the chromosomal region 11q13-11q14 are involved in several pathologies. [provided by RefSeq, Jul 2008]
Usage	Research use only



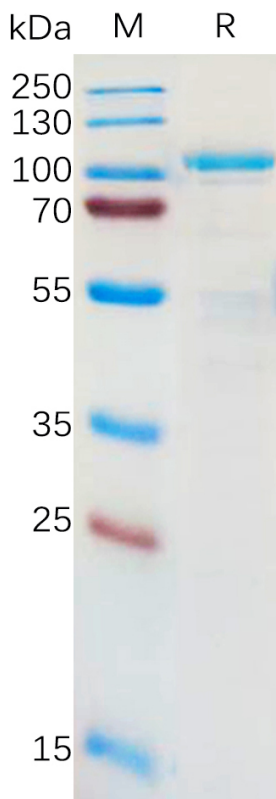


Figure 1. Human LRRC32 Protein, hFc Tag on SDS-PAGE under reducing condition.

