

PRODUCT INFORMATION

Target	MIF
Synonyms	GIF;GLIF;MMIF
Description	Recombinant human MIF protein with C-terminal hFc tag
Delivery	In Stock
Uniprot ID	P14174
Expression Host	HEK293
Tag	C-Human Fc Tag
Molecular Characterization	MIF(Pro2-Ala115) hFc(Glu99-Ala330)
Molecular Weight	The protein has a predicted molecular mass of 38.5 kDa after removal of the signal peptide. The apparent molecular mass of MIF-hFc is approximately 35-55 kDa due to glycosylation.
Purity	The purity of the protein is greater than 95% as determined by SDS-PAGE and Coomassie blue staining.
Formulation & Reconstitution	Lyophilized from sterile PBS, pH 7.4. Normally 5 % - 8% trehalose is added as protectants before lyophilization. Please see Certificate of Analysis for specific instructions of reconstitution.
Storage&Shipping	Store at -20°C to -80°C for 12 months in lyophilized form. After reconstitution, if not intended for use within a month, aliquot and store at -80°C (Avoid repeated freezing and thawing). Lyophilized proteins are shipped at ambient temperature.
Sterility	Products are supplied non-sterile. For cell culture applications, dilute in appropriate medium and sterile-filter (0.22 µm) prior to use.
Background	This gene encodes a lymphokine involved in cell-mediated immunity, immunoregulation, and inflammation. It plays a role in the regulation of macrophage function in host defense through the suppression of anti-inflammatory effects of glucocorticoids. This lymphokine and the JAB1 protein form a complex in the cytosol near the peripheral plasma membrane, which may indicate an additional role in integrin signaling pathways. [provided by RefSeq, Jul 2008]
Usage	Research use only
Conjugate	Unconjugated



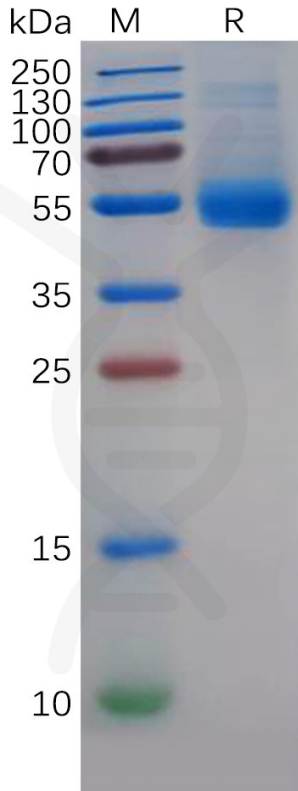


Figure 1. Human MIF Protein, hFc Tag on SDS-PAGE under reducing condition.

Human MIF, hFc Tagged protein ELISA

0.2 μ g of Human MIF, hFc tagged protein per well

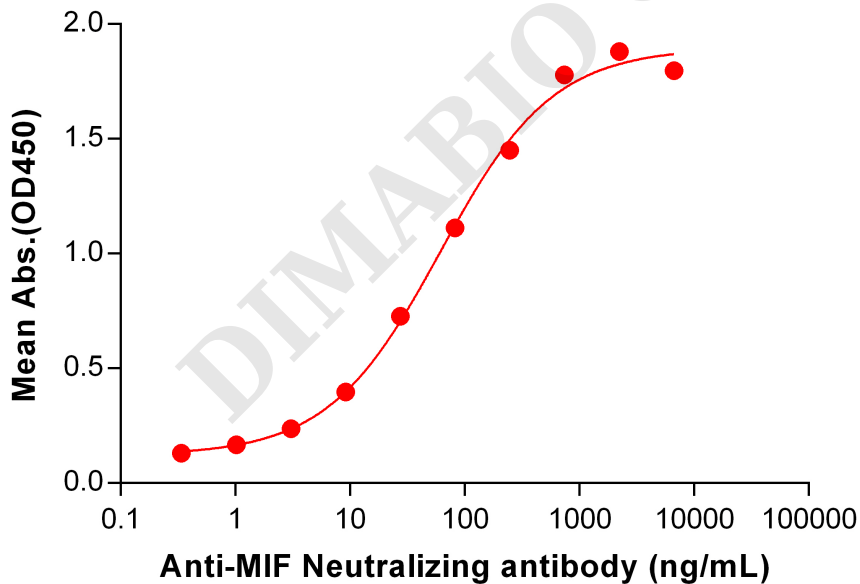


Figure 2. ELISA plate pre-coated by 2 μ g/mL (100 μ L/well) Human MIF Protein, hFc Tag (PME100350) can bind Anti-MIF Neutralizing antibody BME100098 in a linear range of 3.05-740.74 ng/mL.

