

PRODUCT INFORMATION

| | |
|---|--|
| Target | NKG2A |
| Synonyms | CD159A;NKG2;NKG2A |
| Description | Recombinant Human NKG2A Protein with N-terminal human Fc tag |
| Delivery | In Stock |
| Uniprot ID | P26715 |
| Expression Host | HEK293 |
| Tag | N-Human Fc Tag |
| Molecular Characterization | hFc(Glu99-Ala330) NKG2A(Pro94-Leu233) |
| Molecular Weight | The protein has a predicted molecular mass of 42.2 kDa after removal of the signal peptide. The apparent molecular mass of hFc-NKG2A is approximately 35-55 kDa due to glycosylation. |
| Purity | The purity of the protein is greater than 95% as determined by SDS-PAGE and Coomassie blue staining. |
| Formulation & Reconstitution | Lyophilized from sterile PBS, pH 7.4. Normally 5% - 8% trehalose is added as protectants before lyophilization. Please see Certificate of Analysis for specific instructions of reconstitution. |
| Storage&Shipping | Store at -20°C to -80°C for 12 months in lyophilized form. After reconstitution, if not intended for use within a month, aliquot and store at -80°C (Avoid repeated freezing and thawing). Lyophilized proteins are shipped at ambient temperature. |
| Sterility | Products are supplied non-sterile. For cell culture applications, dilute in appropriate medium and sterile-filter (0.22 µm) prior to use. |
| Background | Natural killer (NK) cells are lymphocytes that can mediate lysis of certain tumor cells and virus-infected cells without previous activation. They can also regulate specific humoral and cell-mediated immunity. The protein encoded by this gene belongs to the killer cell lectin-like receptor family, also called NKG2 family, which is a group of transmembrane proteins preferentially expressed in NK cells. This family of proteins is characterized by the type II membrane orientation and the presence of a C-type lectin domain. This protein forms a complex with another family member, KLRD1/CD94, and has been implicated in the recognition of the MHC class I HLA-E molecules in NK cells. The genes of NKG2 family members form a killer cell lectin-like receptor gene cluster on chromosome 12. Multiple alternatively spliced transcript variants encoding distinct isoforms have been observed. [provided by RefSeq, Jan 2015] |
| Usage | Research use only |
| Conjugate | Unconjugated |



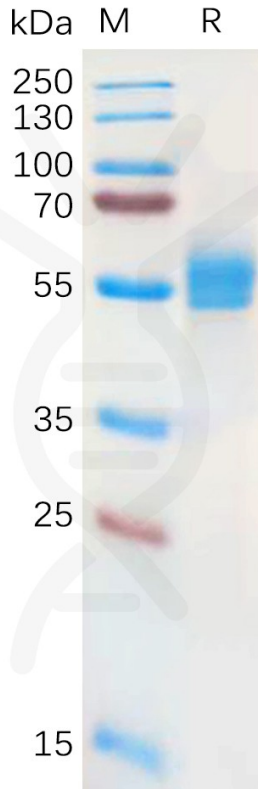


Figure 1. Human NKG2A Protein, hFc Tag on SDS-PAGE under reducing condition.

Human NKG2A, hFc Tagged protein ELISA

0.2 μ g of Human NKG2A, hFc tagged protein per well

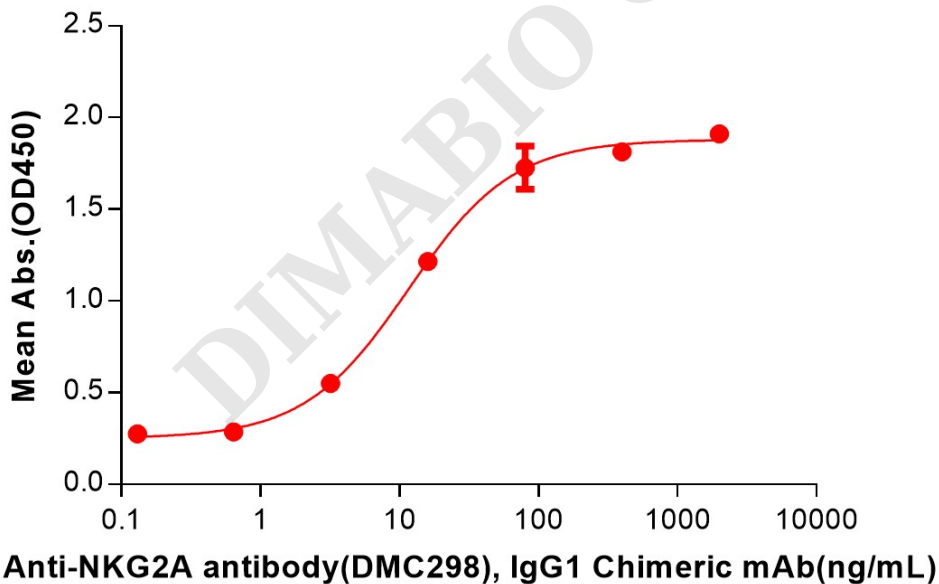


Figure 2. ELISA plate pre-coated by 2 μ g/mL (100 μ L/well) Human NKG2A Protein, hFc Tag (PME100851) can bind Anti-NKG2A antibody(DMC298), IgG1 Chimeric mAb in a linear range of 3.20-80 ng/mL.

