

PRODUCT INFORMATION

| | |
|---|--|
| Target | OX40 Ligand |
| Synonyms | OX40L;TNFSF4;CD252;Glycoprotein Gp34;TXGP1;CD134 ligand;CD134L |
| Description | Recombinant human OX40L protein with N-terminal mouse Fc and C-terminal 6×His tag |
| Delivery | In Stock |
| Uniprot ID | P23510 |
| Expression Host | HEK293 |
| Tag | N-Mouse Fc and C-6×His Tag |
| Molecular Characterization | mFc(Pro99-Lys330) OX40 Ligand(Gln51-Leu183) 6×His |
| Molecular Weight | The protein has a predicted molecular mass of 44.0 kDa after removal of the signal peptide. |
| Purity | The purity of the protein is greater than 95% as determined by SDS-PAGE and Coomassie blue staining. |
| Formulation & Reconstitution | Lyophilized from sterile PBS, pH 7.4. Normally 5 % - 8% trehalose is added as protectants before lyophilization. Please see Certificate of Analysis for specific instructions of reconstitution. |
| Storage&Shipping | Store at -20°C to -80°C for 12 months in lyophilized form. After reconstitution, if not intended for use within a month, aliquot and store at -80°C (Avoid repeated freezing and thawing). Lyophilized proteins are shipped at ambient temperature. |
| Sterility | Products are supplied non-sterile. For cell culture applications, dilute in appropriate medium and sterile-filter (0.22 µm) prior to use. |
| Background | This gene encodes a cytokine of the tumor necrosis factor (TNF) ligand family. The encoded protein functions in T cell antigen-presenting cell (APC) interactions and mediates adhesion of activated T cells to endothelial cells. Polymorphisms in this gene have been associated with Sjogren's syndrome and systemic lupus erythematosus. Alternative splicing results in multiple transcript variants. |
| Usage | Research use only |
| Conjugate | Unconjugated |



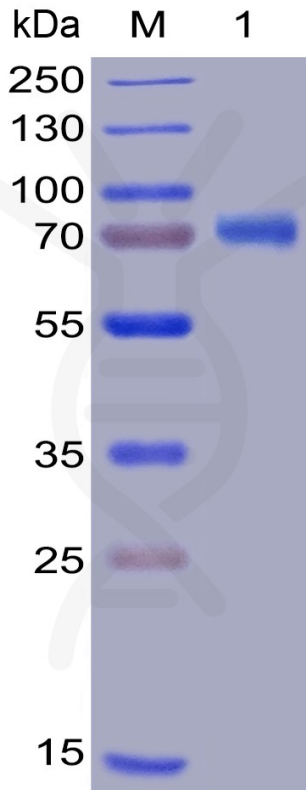


Figure 1. Human OX40 Ligand Protein, mFc-His Tag on SDS-PAGE under reducing condition.

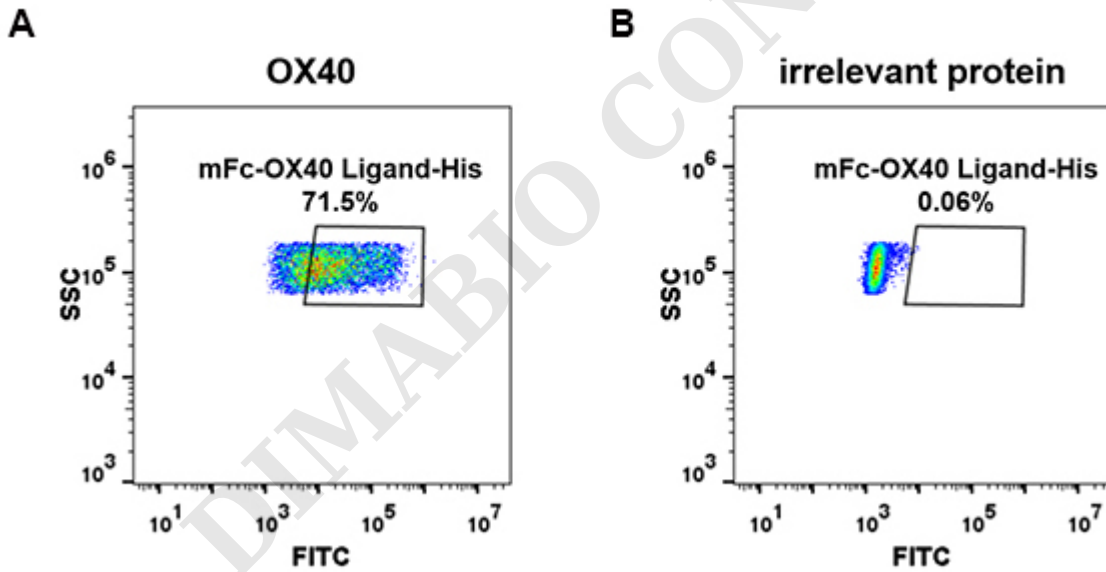


Figure 2. HEK293 cell line transfected with irrelevant protein (B) and human OX40 (A) were surface stained with Human OX40 Ligand, mFc-His tagged protein (PME100021) 10 µg/ml followed by Alexa 488-conjugated anti-mouse IgG secondary antibody.



Human OX40-L, mFc-His tagged protein ELISA

0.1 μg of Human OX40-L, mFc-His tagged protein per well

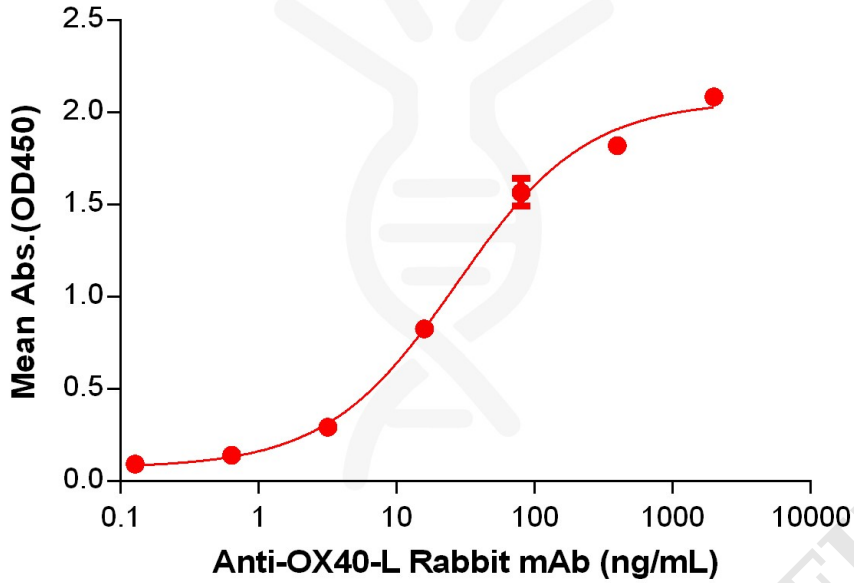


Figure 3. ELISA plate pre-coated by 1 $\mu\text{g}/\text{mL}$ (100 $\mu\text{L}/\text{well}$) Human OX40-L Protein, mFc-His Tag (PME100021) can bind Anti-OX40-L Rabbit mAb in a linear range of 3.2-80 ng/mL.

