

PRODUCT INFORMATION

Target	PDL1
Synonyms	PD-L1;CD274;B7-H1;PDCD1L1;PDCD1LG1
Description	Recombinant human PD-L1 protein with C-terminal mouse Fc and 6×His tag
Delivery	In Stock
Uniprot ID	Q9NZQ7
Expression Host	HEK293
Tag	C-Mouse Fc and 6×His Tag
Molecular Characterization	PD-L1(Phe19-Arg238) mFc(Pro99-Lys330) 6×His tag
Molecular Weight	The protein has a predicted molecular mass of 52.3 kDa after removal of the signal peptide.
Purity	The purity of the protein is greater than 95% as determined by SDS-PAGE and Coomassie blue staining.
Formulation & Reconstitution	Lyophilized from sterile PBS, pH 7.4. Normally 5 % - 8% trehalose is added as protectants before lyophilization. Please see Certificate of Analysis for specific instructions of reconstitution.
Storage & Shipping	Store at -20°C to -80°C for 12 months in lyophilized form. After reconstitution, if not intended for use within a month, aliquot and store at -80°C (Avoid repeated freezing and thawing). Lyophilized proteins are shipped at ambient temperature.
Background	This gene encodes an immune inhibitory receptor ligand that is expressed by hematopoietic and non-hematopoietic cells, such as T cells and B cells and various types of tumor cells. The encoded protein is a type I transmembrane protein that has immunoglobulin V-like and C-like domains. Interaction of this ligand with its receptor inhibits T-cell activation and cytokine production. During infection or inflammation of normal tissue, this interaction is important for preventing autoimmunity by maintaining homeostasis of the immune response. In tumor microenvironments, this interaction provides an immune escape for tumor cells through cytotoxic T-cell inactivation. Expression of this gene in tumor cells is considered to be prognostic in many types of human malignancies, including colon cancer and renal cell carcinoma. Alternative splicing results in multiple transcript variants.
Usage	Research use only



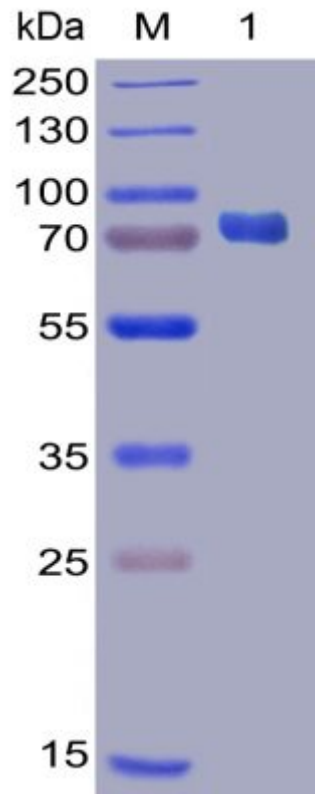


Figure 1. Human PD-L1 Protein, mFc-His Tag on SDS-PAGE under reducing condition.

Human PDL1, mFc-His Tagged protein ELISA
0.2 µg of Human PDL1, mFc-His Tagged protein per well

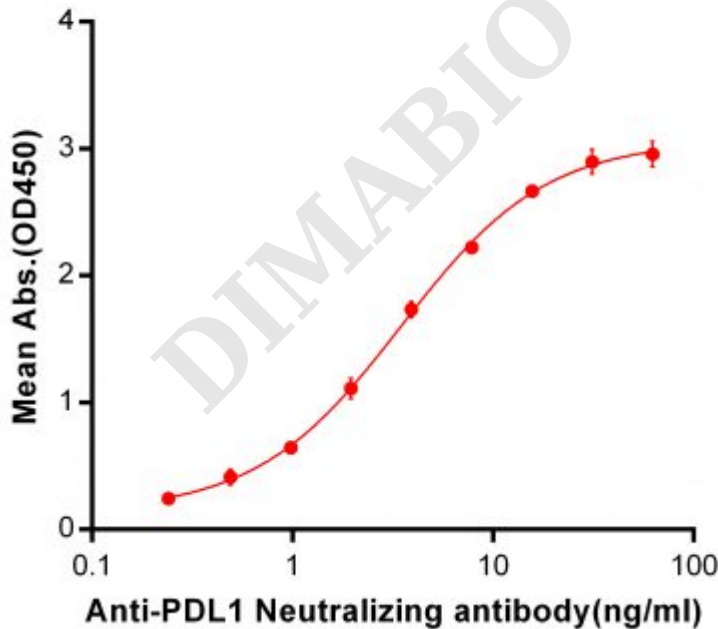


Figure 2. ELISA plate pre-coated by 2 µg/ml (100 µl/well) Human PD-L1, mFc-His tagged protein ([getskuurl sku="PME100023"]) can bind Anti-PDL1 Neutralizing antibody ([getskuurl sku="BME100009"]) in a linear range of 0.24-7.81 ng/ml.



Human PD-L1, mFc-His Tagged protein ELISA
0.2 µg of PD1, hFc-His Tagged protein per well

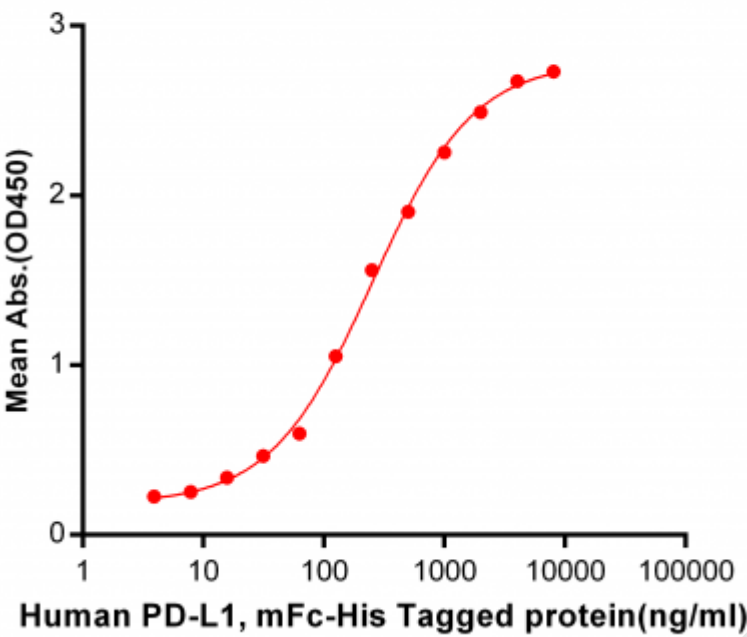


Figure 3. ELISA plate pre-coated by 2 µg/ml (100 µl/well) Human PD1, hFc-His tagged protein ([getskuurl sku="PME100462"]) can bind Human PDL1, mFc-His tagged protein (PME100023) in a linear range of 62.5-251.1 ng/ml.

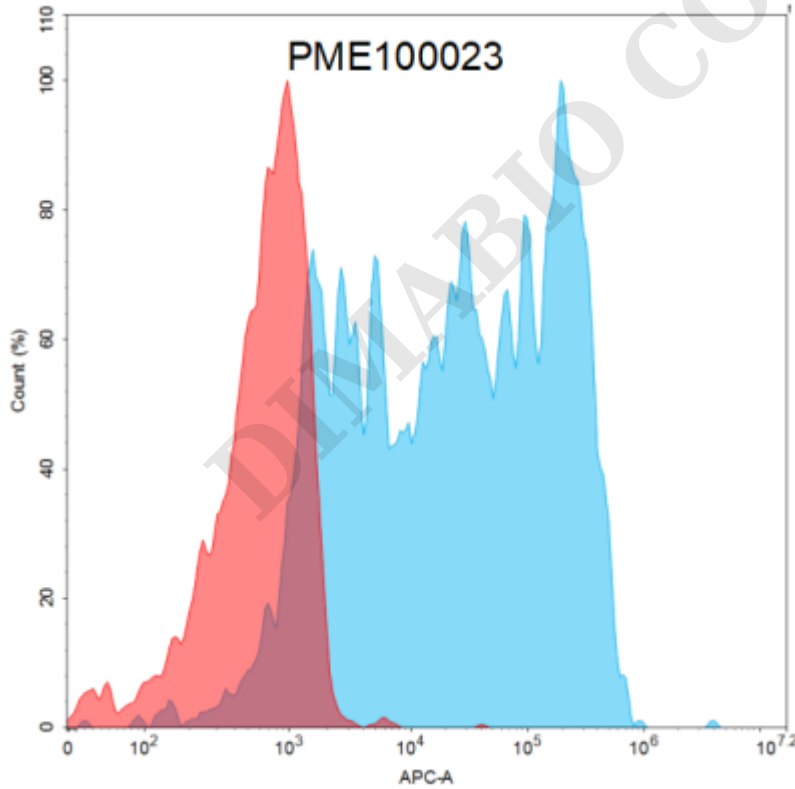


Figure 4. Flow cytometry analysis with 15 µg/mL Human PD-L1 Protein, mFc-His tag (PME100023) on Expi293 cells transfected with human PD1 (Blue histogram) or Expi293 transfected with irrelevant protein (Red histogram).

